

Sunrise IAP Map

MT-LNF-001336

9/7/2017

Day Shift

Approx. 26,190 acres

as of 9/6/2017 @ 01:44 hrs.

Page 1 of 8

Legend

Repair Status - Point

- Completed - Inspected
- Completed - Ready for Inspection
- Repair Needed
- No Repair Needed
- Unknown
- Structure
- Completed Dozer Line
- Completed Hand Line
- Road as Completed Line
- Line Break Completed
- Aerial Retardant Drop
- Fire Travel Roads
- Unknown

- Fire Travel Roads
- Completed - Inspected
- Completed - Ready for Inspection
- In Progress
- Repair Needed
- No Repair Needed
- Unknown
- Wildfire Daily Fire Perimeter
- Closure
- Dip Site
- Drop Point
- Gate
- Helispot
- Landmark
- Restricted Water Source
- Division Break

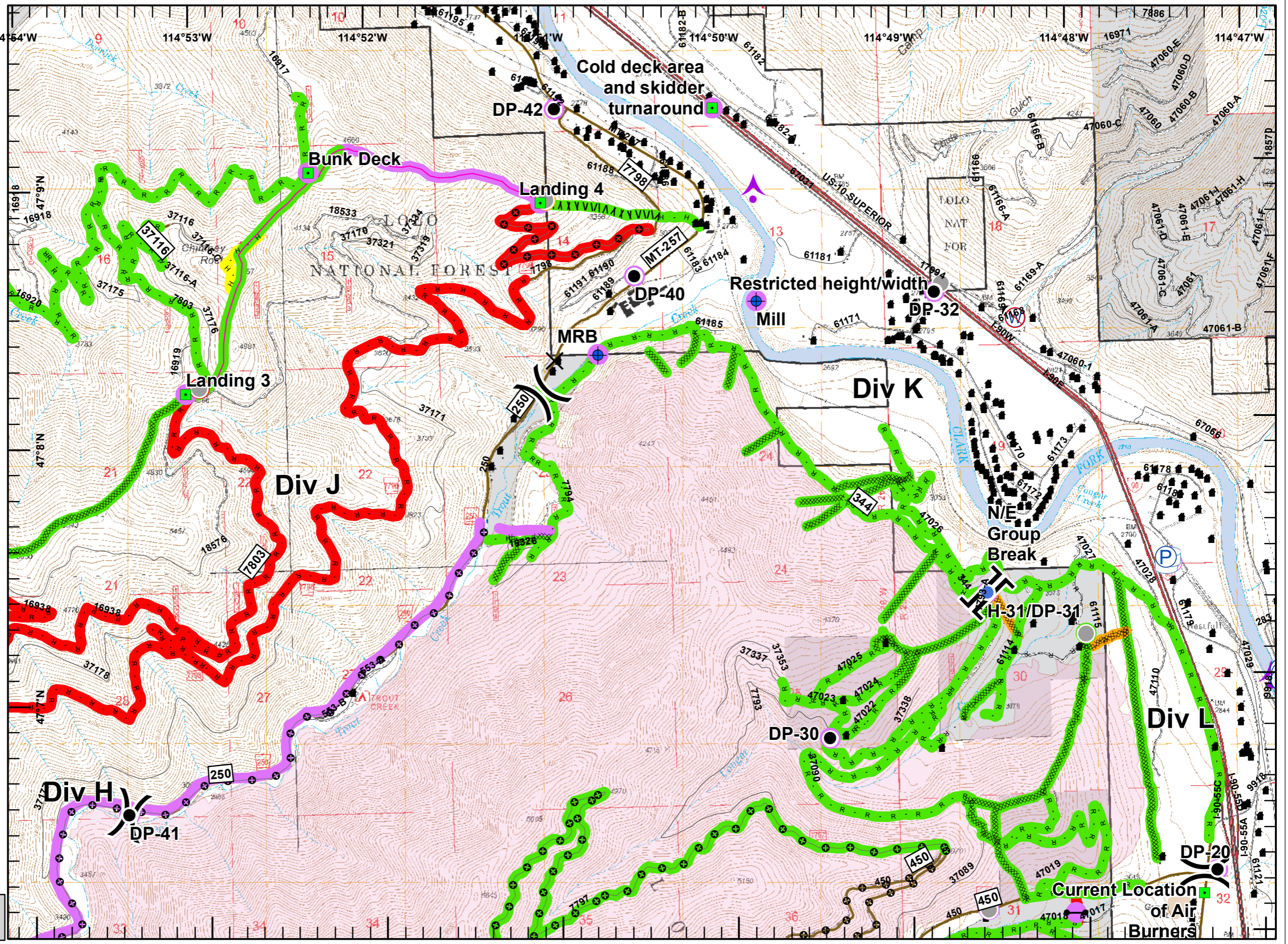
- Fire Travel Roads
- Completed - Inspected
- Completed - Ready for Inspection
- In Progress
- Repair Needed
- No Repair Needed
- Unknown
- Wildfire Daily Fire Perimeter
- Closure
- Dip Site
- Drop Point
- Gate
- Helispot
- Landmark
- Restricted Water Source
- Division Break

- Fire Travel Roads
- Completed - Inspected
- Completed - Ready for Inspection
- In Progress
- Repair Needed
- No Repair Needed
- Unknown
- Wildfire Daily Fire Perimeter
- Closure
- Dip Site
- Drop Point
- Gate
- Helispot
- Landmark
- Restricted Water Source
- Division Break

- Fire Travel Roads
- Completed - Inspected
- Completed - Ready for Inspection
- In Progress
- Repair Needed
- No Repair Needed
- Unknown
- Wildfire Daily Fire Perimeter
- Closure
- Dip Point
- Drop Point
- Gate
- Helispot
- Landmark
- Restricted Water Source
- Division Break

- Fire Travel Roads
- Completed - Inspected
- Completed - Ready for Inspection
- In Progress
- Repair Needed
- No Repair Needed
- Unknown
- Wildfire Daily Fire Perimeter
- Closure
- Dip Site
- Drop Point
- Gate
- Helispot
- Landmark
- Restricted Water Source
- Division Break

- Fire Travel Roads
- Completed - Inspected
- Completed - Ready for Inspection
- In Progress
- Repair Needed
- No Repair Needed
- Unknown
- Wildfire Daily Fire Perimeter
- Closure
- Dip Site
- Drop Point
- Gate
- Helispot
- Landmark
- Restricted Water Source
- Division Break

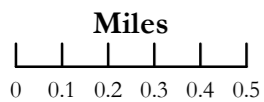


0 0.1 0.2 0.3 0.4 0.5 Miles

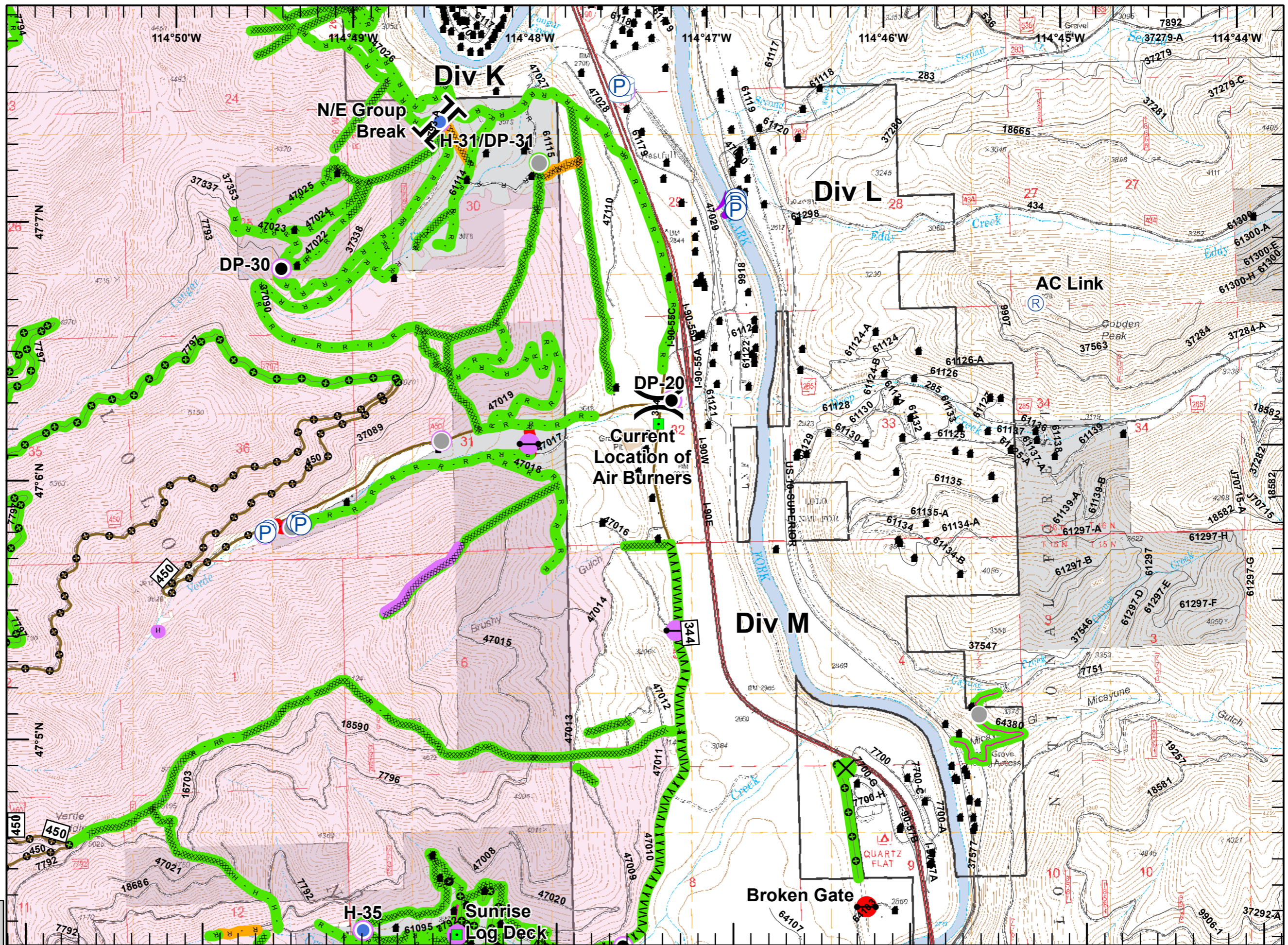
NAD 83
UTM Zone 11

GMK - NR WMT
9/10/2017
1529

- Legend**
- Repair Status - Point**
- Completed - Inspected
 - Repair Needed
 - Unknown
 - Structure
 - XXXXX Completed Dozer Line
 - H - Completed Hand Line
 - R - Road as Completed Line
 - /// Line Break Completed
 - Aerial Retardant Drop
 - ⊕ Fire Travel Roads
 - Unknown
- Repair Status - Line**
- Completed - Inspected
 - Completed - Ready for Inspection
 - Repair Needed
 - No Repair Needed
 - Unknown
 - Wildfire Daily Fire Perimeter
 - X Closure
 - Drop Point
 - ⊕ Gate
 - ⊕ Helispot
 - ⊕ Landmark
 - ⊕ Repeater
 - ⊕ Water Source
 -) Division Break
 - || Branch Break



NAD 83
 UTM Zone 11
 GMK - NR WMT
 9/10/2017
 1529


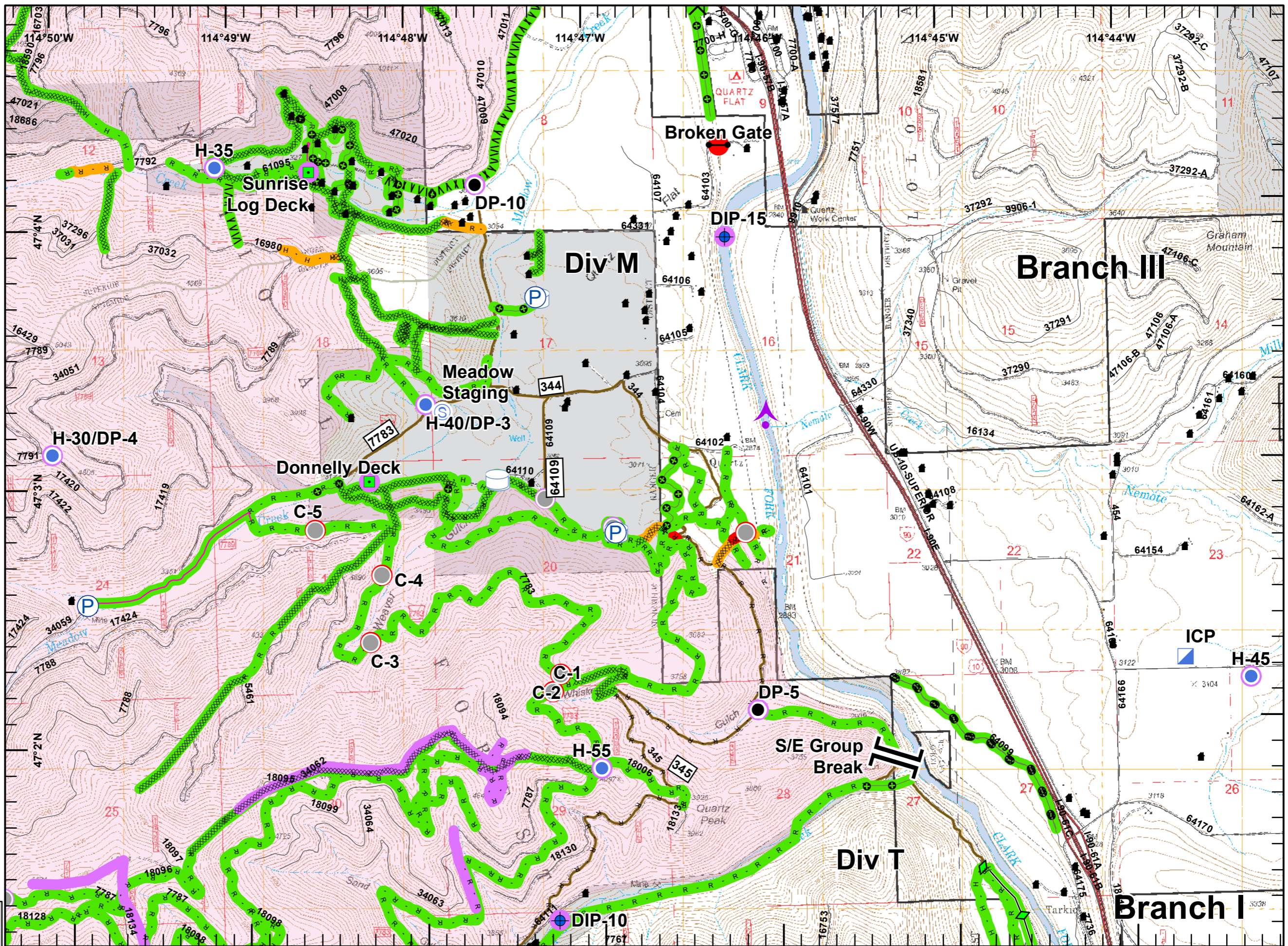


- Legend**
- Repair Status - Point**
- Completed - Inspected
 - Repair Needed
 - Unknown
 - Structure
- Repair Status - Line**
- Completed - Inspected
 - Completed - Ready for Inspection
 - Repair Needed
 - Unknown
- Other Symbols**
- Completed Dozer Line
 - Completed Hand Line
 - Road as Completed Line
 - Line Break Completed
 - Completed Plow Line
 - Aerial Retardant Drop
 - Fire Travel Roads
 - Unknown
 - Wildfire Daily Fire Perimeter
 - Closure
 - Dip Site
 - Drop Point
 - Gate
 - Helispot
 - Incident Command Post
 - Landmark
 - Staging Area
 - Branch Break

Miles
 0 0.1 0.2 0.3 0.4 0.5

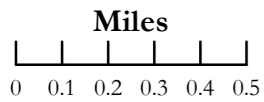
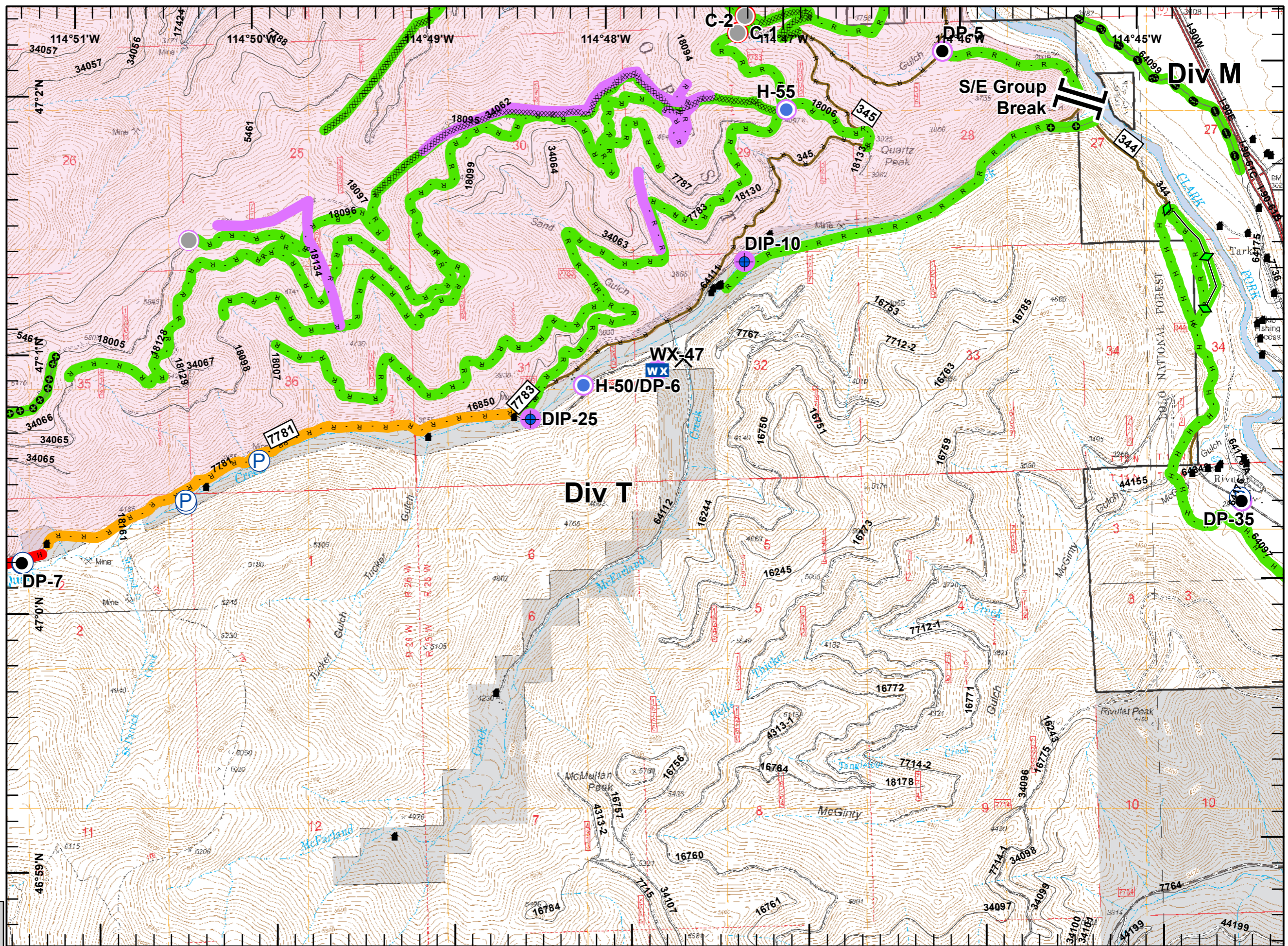
NAD 83
 UTM Zone 11

GMK - NR WMT
 9/10/2017
 1529

**Sunrise
IAP Map**
 MT-LNF-001336
 9/7/2017
 Day Shift
 Approx. 26,190 acres
 as of 9/6/2017 @ 01:44 hrs.
 Page 4 of 8

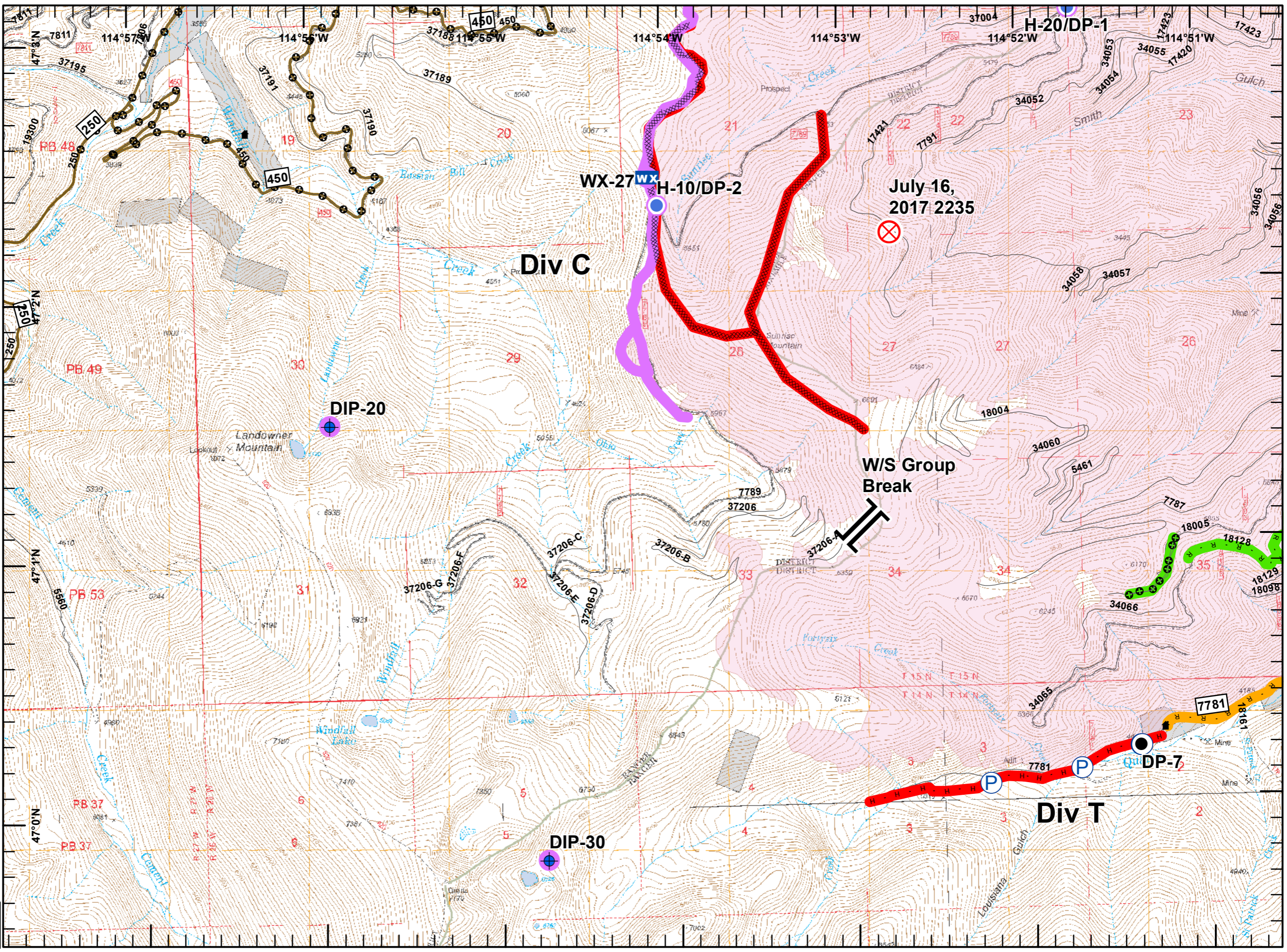
- Legend**
- Repair Status - Point**
- Repair Needed
 - Unknown
 - Structure
 - XXXXX Completed Dozer Line
 - H Completed Hand Line
 - R Road as Completed Line
 - ◆ Completed Plow Line
 - Aerial Retardant Drop
 - ⊕ Fire Travel Roads
- Repair Status - Line**
- Completed - Inspected
 - Completed - Ready for Inspection
 - Repair Needed
 - Unknown
 - ▭ Wildfire Daily Fire Perimeter
 - ✕ Closure
 - ⊕ Dip Site
 - Drop Point
 - Helispot
 - WX Mobile Weather Unit
 - || Branch Break



NAD 83
 UTM Zone 11
 GMK - NR WMT
 9/10/2017
 1529

**Sunrise
IAP Map**
 MT-LNF-001336
 9/7/2017
 Day Shift
 Approx. 26,190 acres
 as of 9/6/2017 @ 01:44 hrs.
 Page 5 of 8

- Legend**
- Repair Status - Point**
- Repair Needed
 - Unknown
 - Structure
 - Completed Dozer Line
 - Completed Hand Line
 - Road as Completed Line
 - Aerial Retardant Drop
 - Fire Travel Roads
- Repair Status - Line**
- Completed - Inspected
 - Completed - Ready for Inspection
 - Repair Needed
 - Unknown
 - Wildfire Daily Fire Perimeter
 - Dip Site
 - Drop Point
 - Fire Origin
 - Helispot
 - Mobile Weather Unit
 - Branch Break

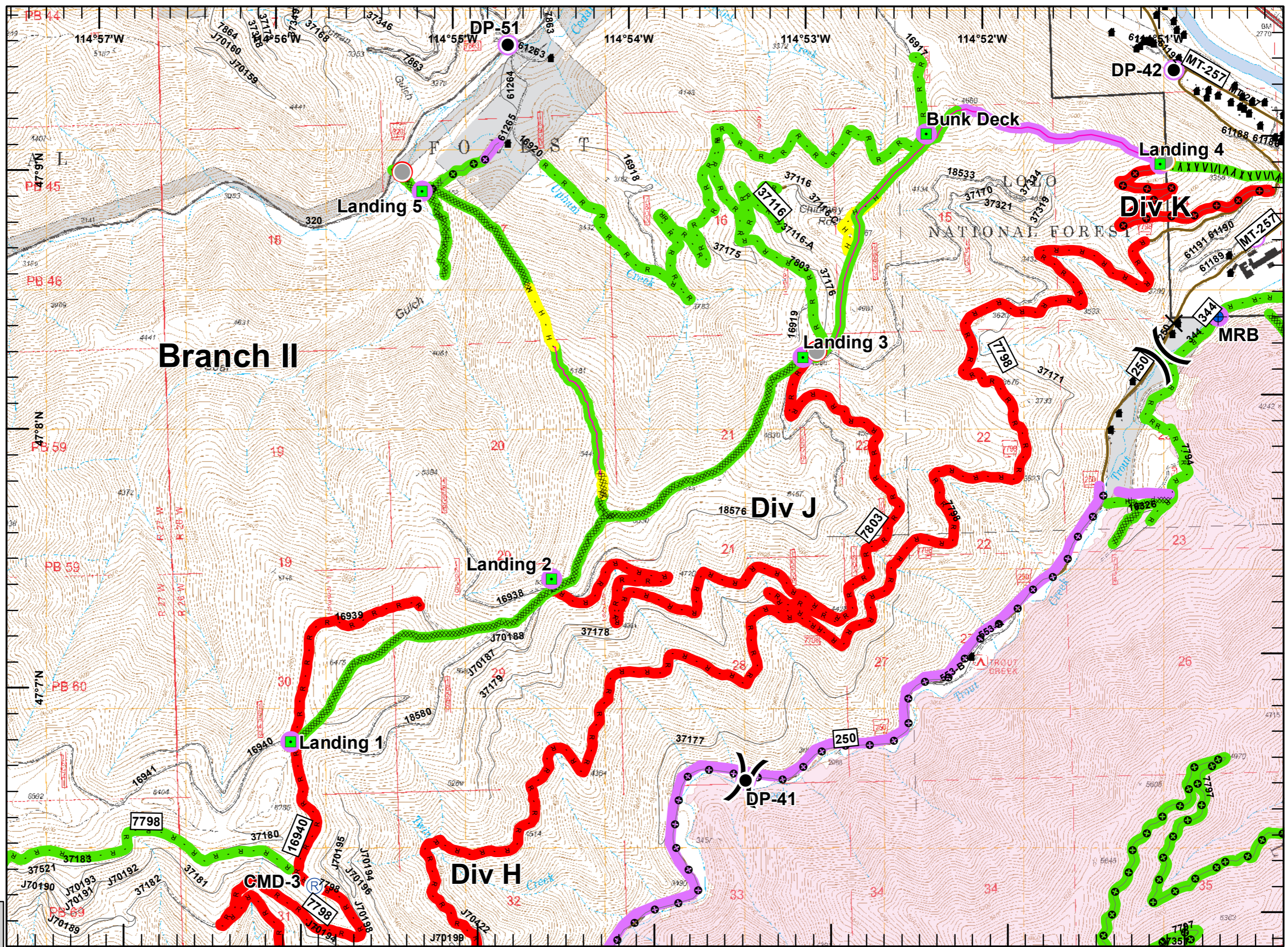


Miles
 0 0.1 0.2 0.3 0.4 0.5

NAD 83
 UTM Zone 11


GMK - NR WMT
 9/10/2017
 1529

- Legend**
- Repair Status - Point**
- Completed - Ready for Inspection
 - Repair Needed
 - No Repair Needed
 - Unknown
 - Structure
 - Completed Dozer Line
 - Completed Hand Line
 - Road as Completed Line
 - Line Break Completed
 - Aerial Retardant Drop
 - Fire Travel Roads
 - Unknown
- Repair Status - Line**
- Completed - Inspected
 - In Progress
 - Repair Needed
 - No Repair Needed
 - Unknown
 - Wildfire Daily Fire Perimeter
 - Closure
 - Dip Site
 - Drop Point
 - Landmark
 - Repeater
 - Division Break



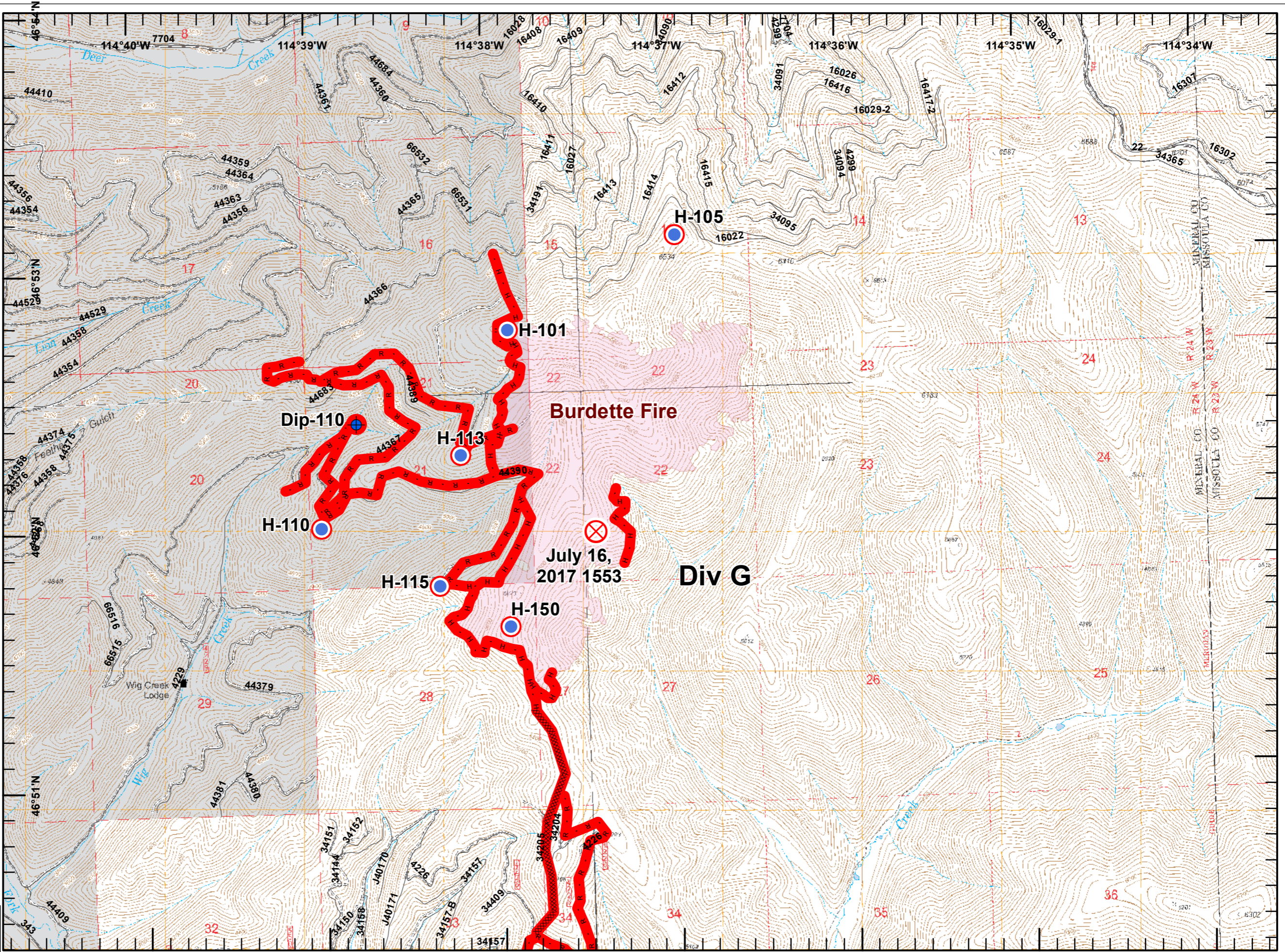
Miles
 0 0.1 0.2 0.3 0.4 0.5

NAD 83
 UTM Zone 11
 GMK - NR WMT
 9/10/2017
 1529



**Sunrise
IAP Map**
 MT-LNF-001336
 9/7/2017
 Day Shift
 Approx. 26,190 acres
 as of 9/6/2017 @ 01:44 hrs.
 Page 8 of 8

- Legend**
- Repair Status - Point**
- Repair Needed
 - No Repair Needed
- Repair Status - Line**
- Repair Needed
 - No Repair Needed
- Other Symbols**
- Structure
 - Completed Dozer Line
 - Completed Hand Line
 - Road as Completed Line
 - Dip Site
 - Fire Origin
 - Helispot



Miles
 0 0.1 0.2 0.3 0.4 0.5

NAD 83
 UTM Zone 11

GMK - NR WMT
 9/10/2017
 1529

