

Sunrise Fire

Briefing Map

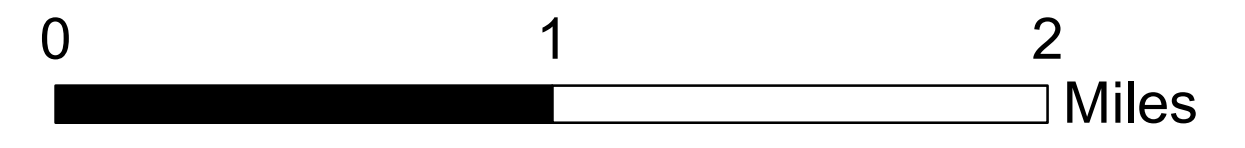
MT-LNF-001336

September 12, 2017 0700

26,264 acres

IR flown 9/9/2017 2159 hrs

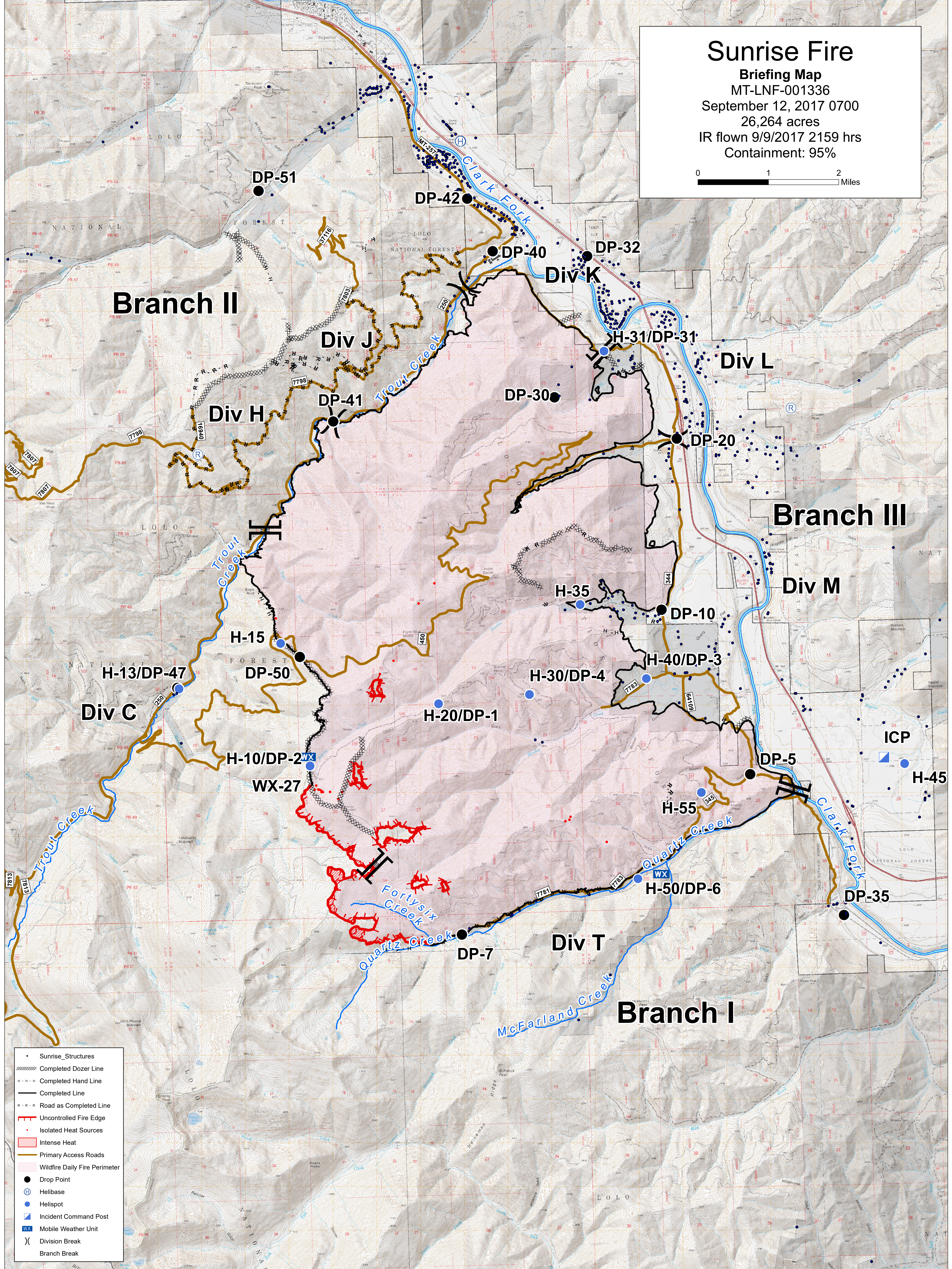
Containment: 95%



Branch II

Branch III

Branch I



- Sunrise_Structures
- Completed Dozer Line
- Completed Hand Line
- Completed Line
- R-R-R Road as Completed Line
- Uncontrolled Fire Edge
- Isolated Heat Sources
- Intense Heat
- Primary Access Roads
- Wildfire Daily Fire Perimeter
- Drop Point
- ⊕ Helibase
- Helispot
- Incident Command Post
- Mobile Weather Unit
- Division Break
- Branch Break