

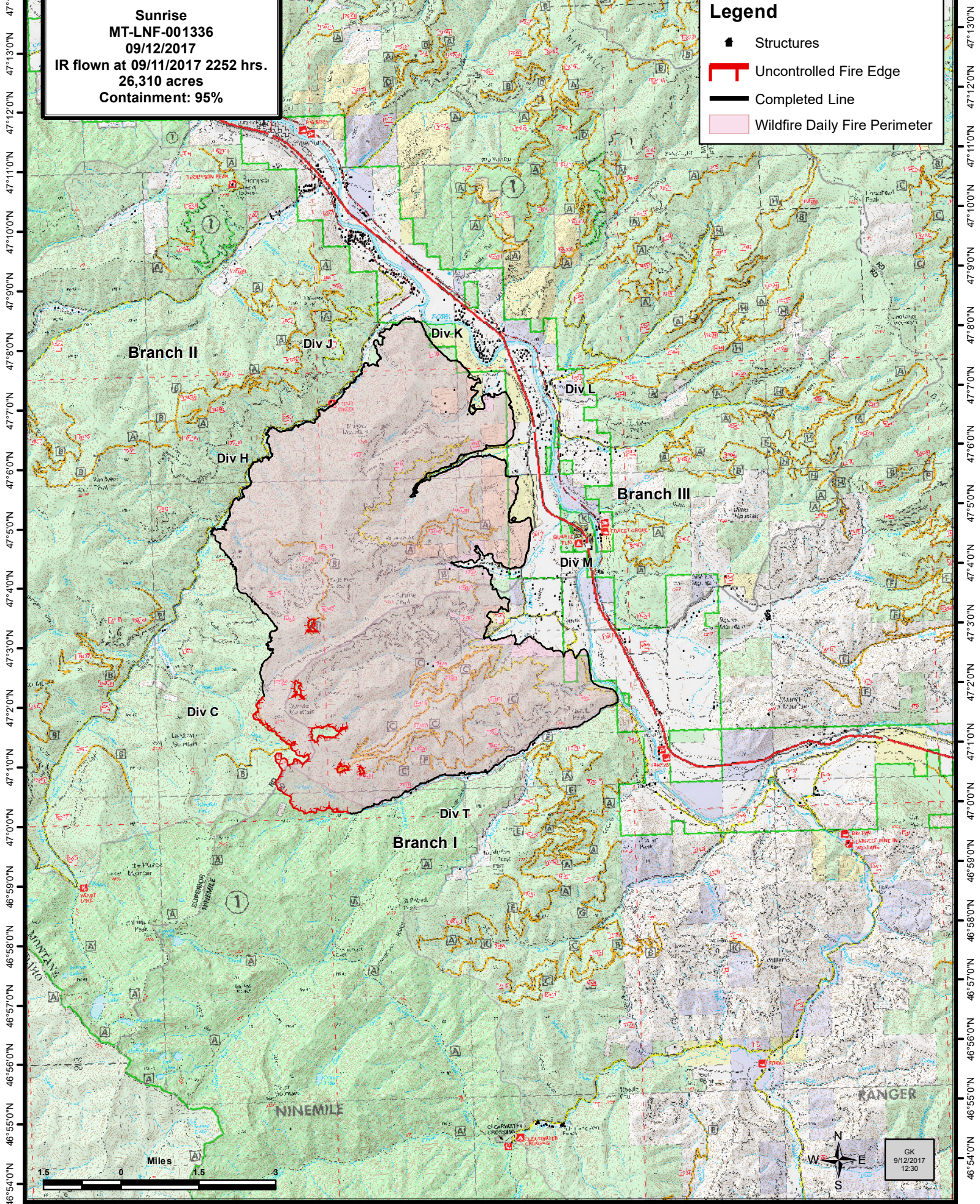
114°59'0"W 114°57'0"W 114°55'0"W 114°53'0"W 114°51'0"W 114°49'0"W 114°47'0"W 114°45'0"W 114°43'0"W 114°41'0"W 114°39'0"W 114°37'0"W

47°14'0"N 47°13'0"N 47°12'0"N 47°11'0"N 47°10'0"N 47°9'0"N 47°8'0"N 47°7'0"N 47°6'0"N 47°5'0"N 47°4'0"N 47°3'0"N 47°2'0"N 47°1'0"N 47°0'0"N 46°59'0"N 46°58'0"N 46°57'0"N 46°56'0"N 46°55'0"N 46°54'0"N

**Sunrise**  
**MT-LNF-001336**  
**09/12/2017**  
**IR flown at 09/11/2017 2252 hrs.**  
**26,310 acres**  
**Containment: 95%**

**Legend**

-  Structures
-  Uncontrolled Fire Edge
-  Completed Line
-  Wildfire Daily Fire Perimeter



115°0'0"W 114°58'0"W 114°56'0"W 114°54'0"W 114°52'0"W 114°50'0"W 114°48'0"W 114°46'0"W 114°44'0"W 114°42'0"W 114°40'0"W 114°38'0"W

GK  
9/12/2017  
12:30