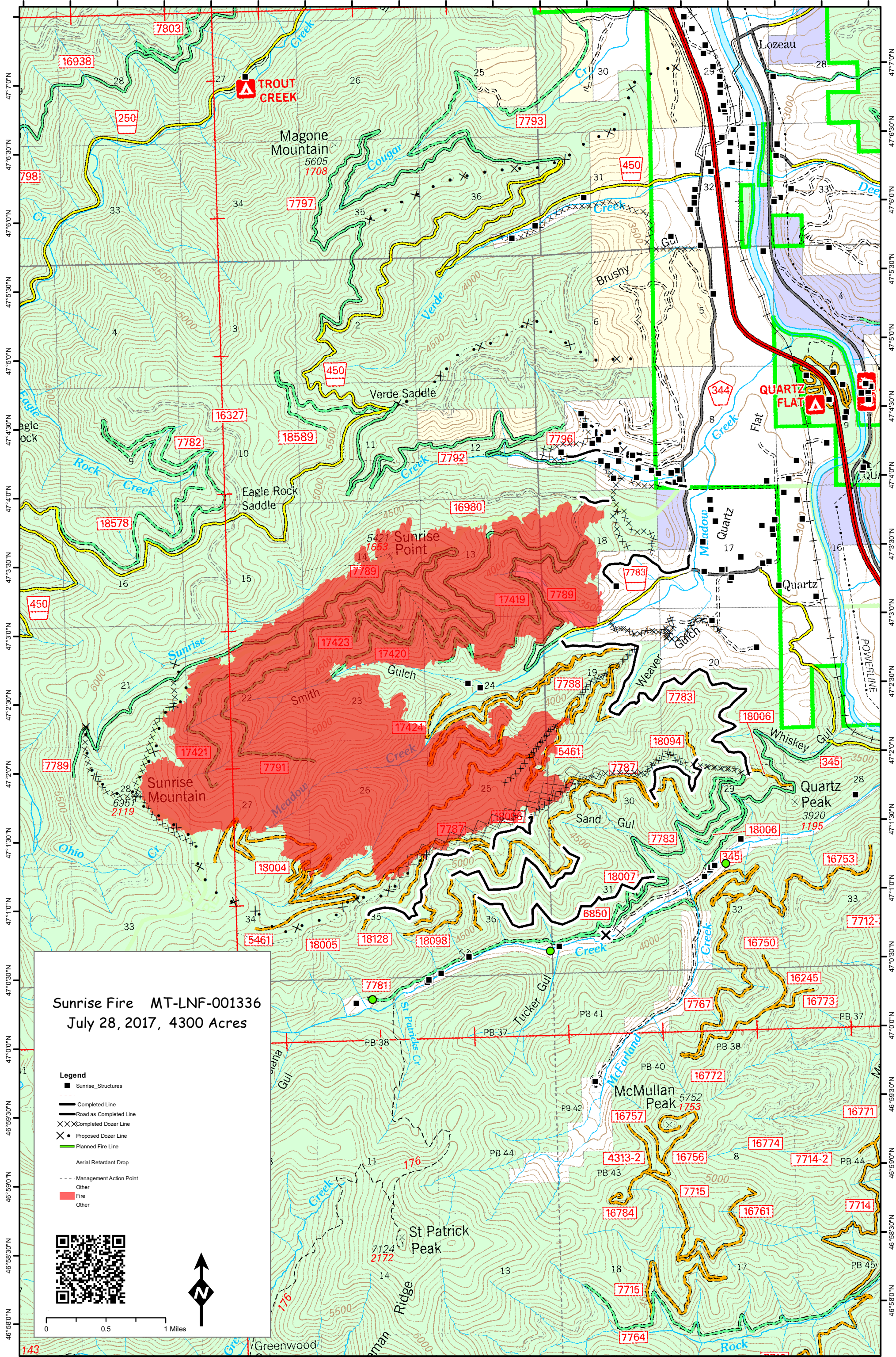
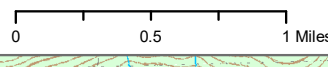


114°54'30"W 114°54'0"W 114°53'30"W 114°53'0"W 114°52'30"W 114°52'0"W 114°51'30"W 114°51'0"W 114°50'30"W 114°50'0"W 114°49'30"W 114°49'0"W 114°48'30"W 114°48'0"W 114°47'30"W 114°47'0"W 114°46'30"W 114°46'0"W 114°45'30"W



Sunrise Fire MT-LNF-001336
July 28, 2017, 4300 Acres

- Legend**
- Sunrise_Structures
 - Completed Line
 - Road as Completed Line
 - XX Completed Dozer Line
 - X Proposed Dozer Line
 - Planned Fire Line
 - Aerial Retardant Drop
 - Management Action Point
 - Other
 - Fire
 - Other



114°54'30"W 114°54'0"W 114°53'30"W 114°53'0"W 114°52'30"W 114°52'0"W 114°51'30"W 114°51'0"W 114°50'30"W 114°50'0"W 114°49'30"W 114°49'0"W 114°48'30"W 114°48'0"W 114°47'30"W 114°47'0"W 114°46'30"W 114°46'0"W