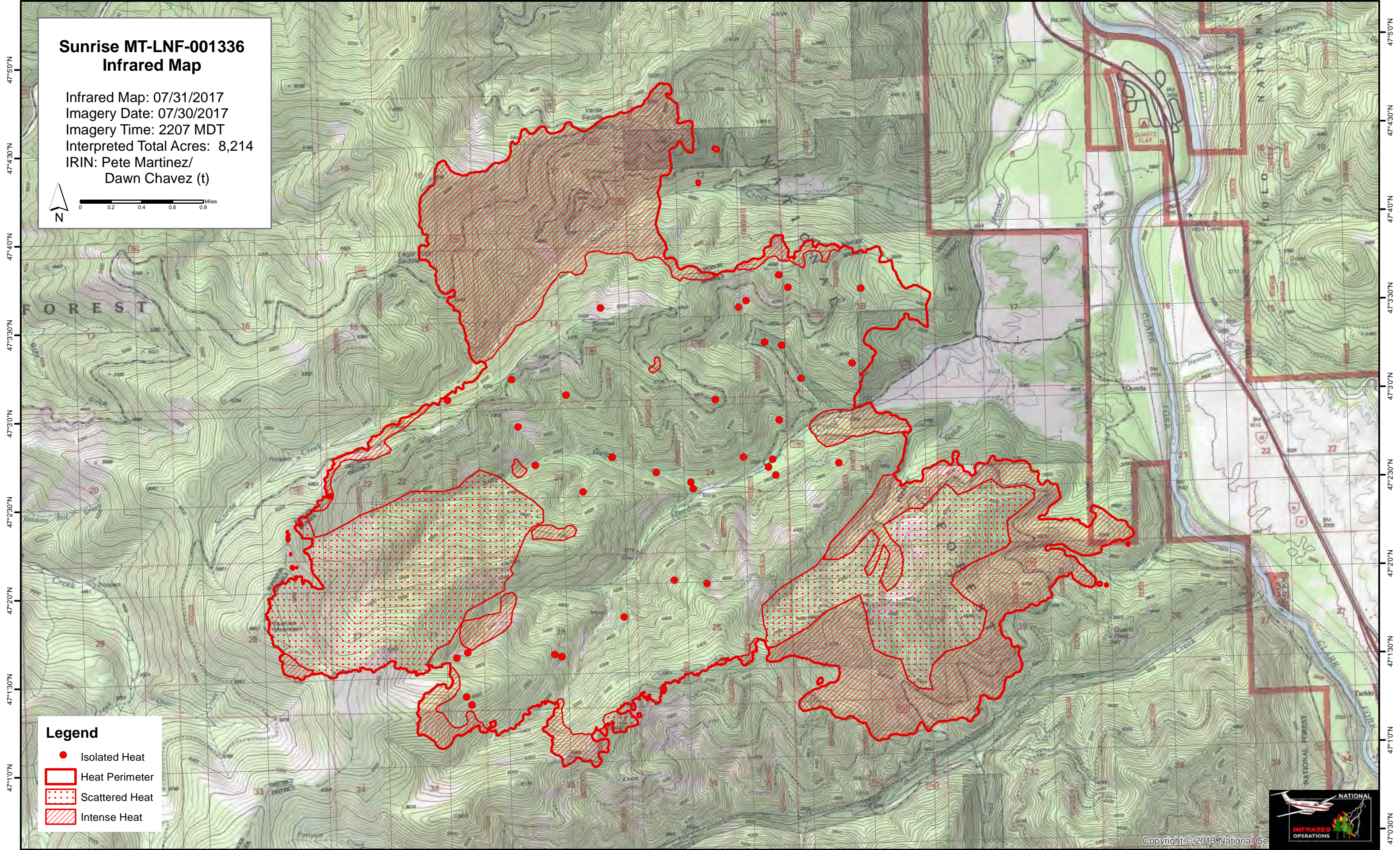
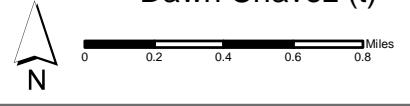


114°55'0"W 114°54'30"W 114°54'0"W 114°53'30"W 114°53'0"W 114°52'30"W 114°52'0"W 114°51'30"W 114°51'0"W 114°50'30"W 114°50'0"W 114°49'30"W 114°49'0"W 114°48'30"W 114°48'0"W 114°47'30"W 114°47'0"W 114°46'30"W 114°46'0"W 114°45'30"W 114°45'0"W 114°44'30"W

Sunrise MT-LNF-001336 Infrared Map

Infrared Map: 07/31/2017
Imagery Date: 07/30/2017
Imagery Time: 2207 MDT
Interpreted Total Acres: 8,214
IRIN: Pete Martinez/
Dawn Chavez (t)



- Legend**
- Isolated Heat
 - Heat Perimeter
 - Scattered Heat
 - Intense Heat

Copyright © 2013 National Ge



114°55'30"W 114°55'0"W 114°54'30"W 114°54'0"W 114°53'30"W 114°53'0"W 114°52'30"W 114°52'0"W 114°51'30"W 114°51'0"W 114°50'30"W 114°50'0"W 114°49'30"W 114°49'0"W 114°48'30"W 114°48'0"W 114°47'30"W 114°47'0"W 114°46'30"W 114°46'0"W 114°45'30"W 114°45'0"W 114°44'30"W