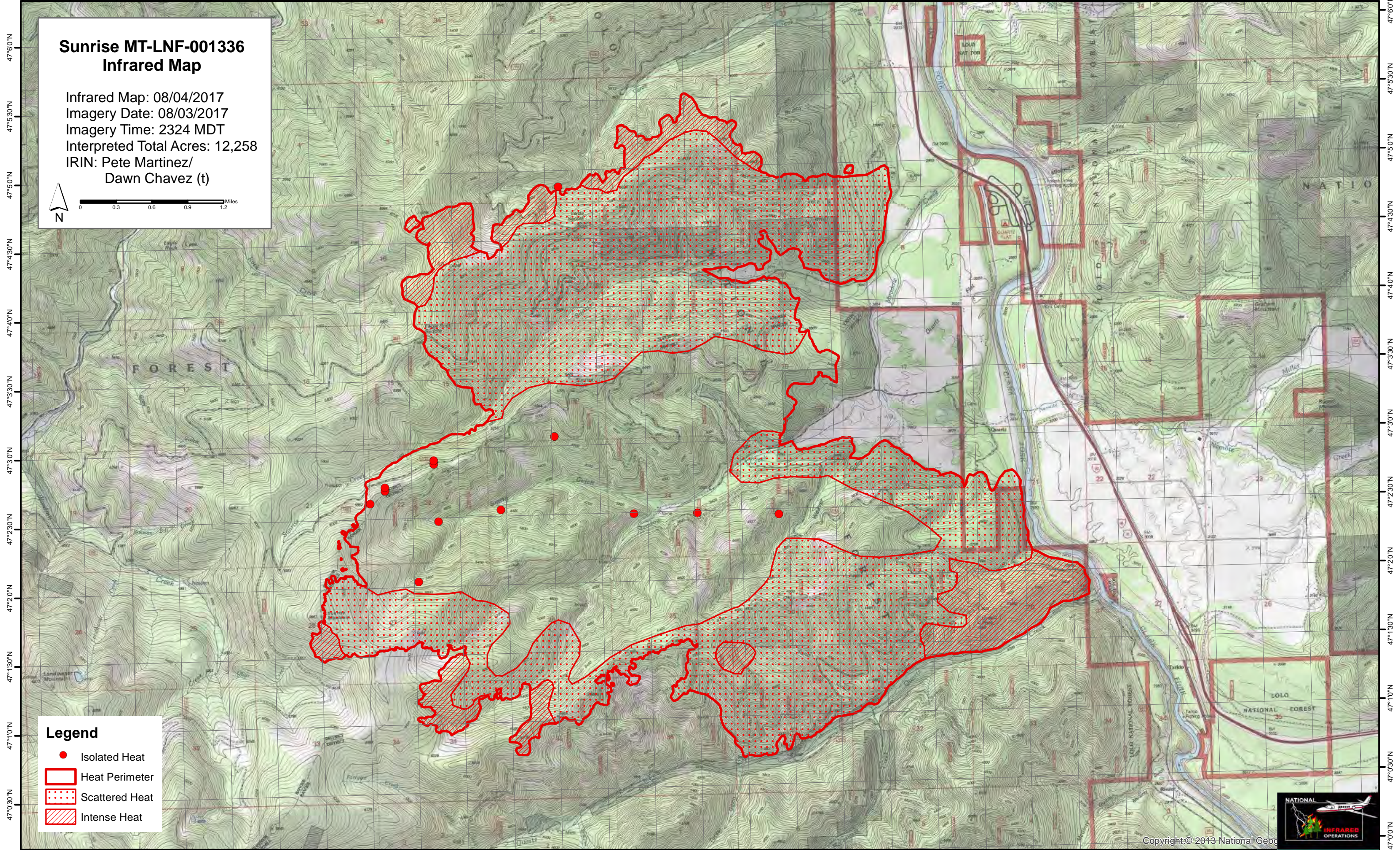
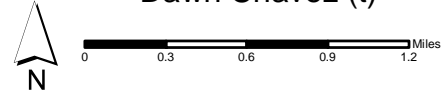


114°56'30"W 114°56'0"W 114°55'30"W 114°55'0"W 114°54'30"W 114°54'0"W 114°53'30"W 114°53'0"W 114°52'30"W 114°52'0"W 114°51'30"W 114°51'0"W 114°50'30"W 114°50'0"W 114°49'30"W 114°49'0"W 114°48'30"W 114°48'0"W 114°47'30"W 114°47'0"W 114°46'30"W 114°46'0"W 114°45'30"W 114°45'0"W 114°44'30"W 114°44'0"W 114°43'30"W 114°43'0"W 114°42'30"W



**Sunrise MT-LNF-001336**  
**Infrared Map**

Infrared Map: 08/04/2017  
Imagery Date: 08/03/2017  
Imagery Time: 2324 MDT  
Interpreted Total Acres: 12,258  
IRIN: Pete Martinez/  
Dawn Chavez (t)



**Legend**

- Isolated Heat
- ▭ Heat Perimeter
- ▨ Scattered Heat
- ▩ Intense Heat

Copyright © 2013 National Geo



114°56'30"W 114°56'0"W 114°55'30"W 114°55'0"W 114°54'30"W 114°54'0"W 114°53'30"W 114°53'0"W 114°52'30"W 114°52'0"W 114°51'30"W 114°51'0"W 114°50'30"W 114°50'0"W 114°49'30"W 114°49'0"W 114°48'30"W 114°48'0"W 114°47'30"W 114°47'0"W 114°46'30"W 114°46'0"W 114°45'30"W 114°45'0"W 114°44'30"W 114°44'0"W 114°43'30"W 114°43'0"W 114°42'30"W