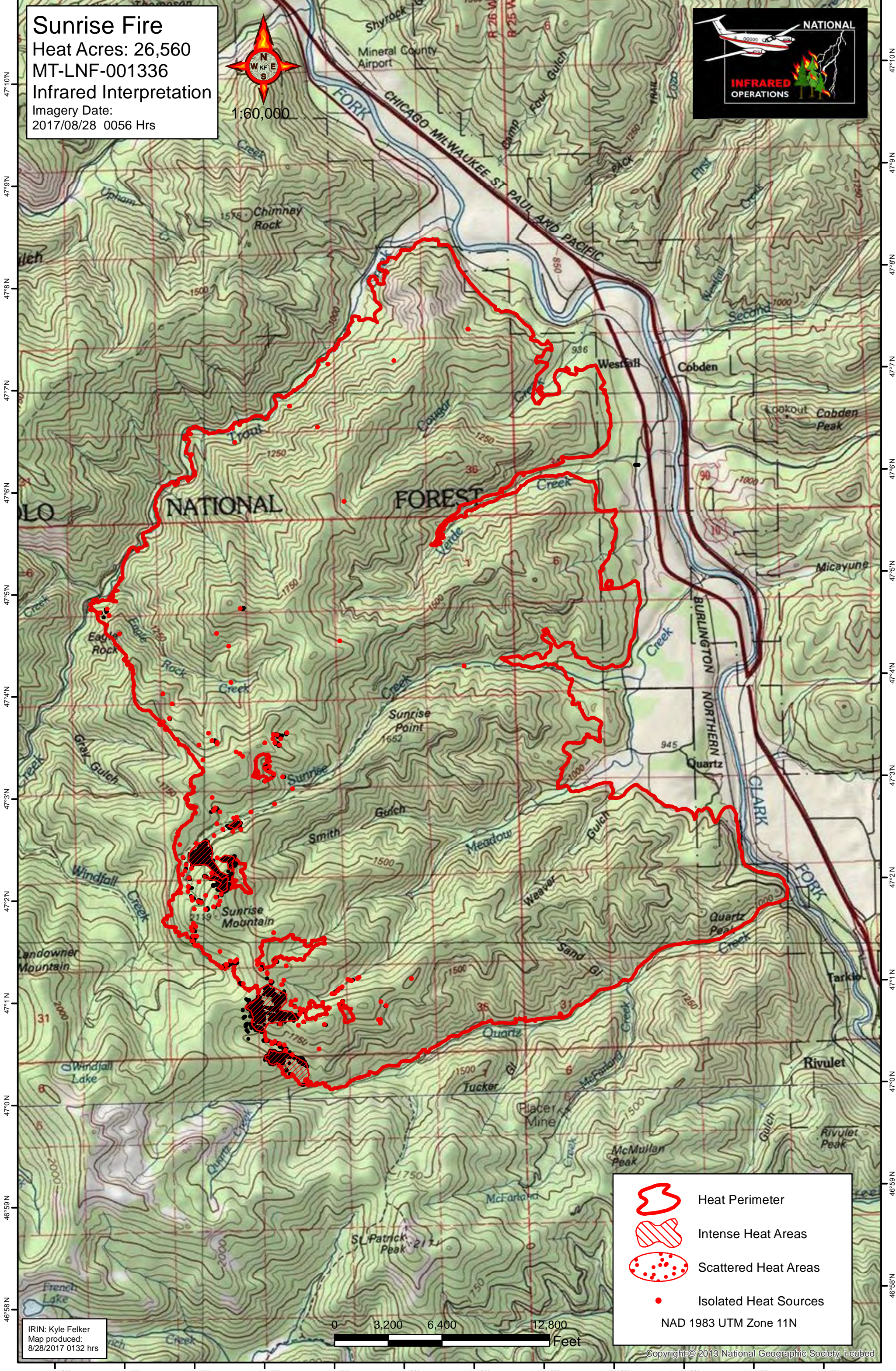
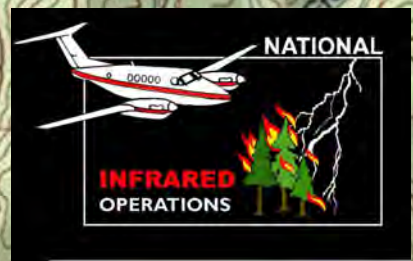






114°56'W 114°55'W 114°54'W 114°53'W 114°52'W 114°51'W 114°50'W 114°49'W 114°48'W 114°47'W 114°46'W 114°45'W 114°44'W

Sunrise Fire
Heat Acres: 26,560
MT-LNF-001336
Infrared Interpretation
Imagery Date:
2017/08/28 0056 Hrs



1:60,000



-  Heat Perimeter
-  Intense Heat Areas
-  Scattered Heat Areas
-  Isolated Heat Sources

NAD 1983 UTM Zone 11N

IRIN: Kyle Felker
Map produced:
8/28/2017 0132 hrs

0 3,200 6,400 12,800
Feet

Copyright © 2013 National Geographic Society, i-cubed

114°56'W 114°55'W 114°54'W 114°53'W 114°52'W 114°51'W 114°50'W 114°49'W 114°48'W 114°47'W 114°46'W 114°45'W