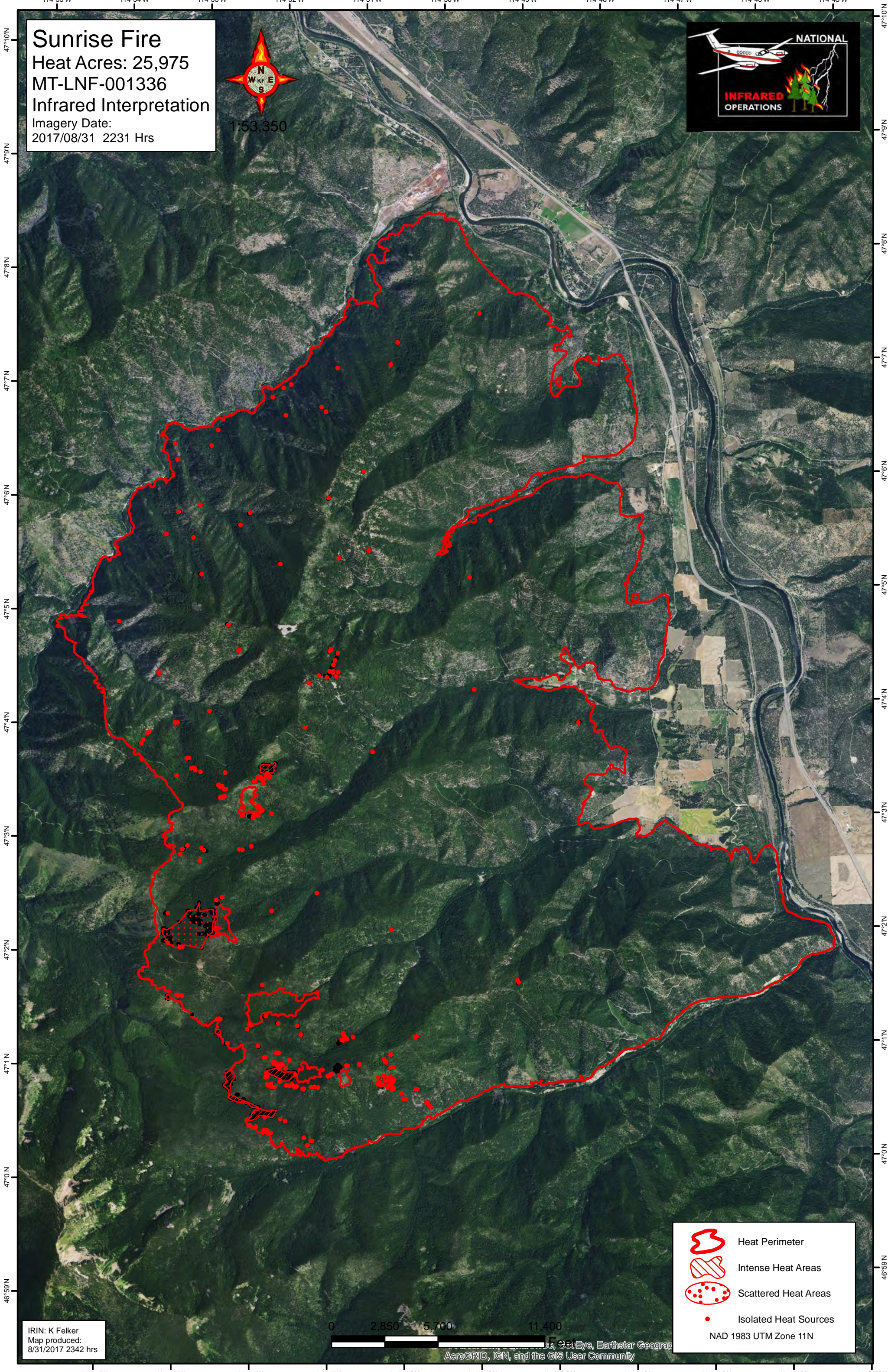






114°55'W 114°54'W 114°53'W 114°52'W 114°51'W 114°50'W 114°49'W 114°48'W 114°47'W 114°46'W 114°45'W

Sunrise Fire
Heat Acres: 25,975
MT-LNF-001336
Infrared Interpretation
Imagery Date:
2017/08/31 2231 Hrs



-  Heat Perimeter
-  Intense Heat Areas
-  Scattered Heat Areas
-  Isolated Heat Sources

NAD 1983 UTM Zone 11N

IRIN: K Felker
Map produced:
8/31/2017 2342 hrs

0 2,850 5,700 11,400

FeoEye, Earthstar Geographics, GeoEye, AeroGRID, IGN, and the GIS User Community

114°55'W 114°54'W 114°53'W 114°52'W 114°51'W 114°50'W 114°49'W 114°48'W 114°47'W 114°46'W 114°45'W