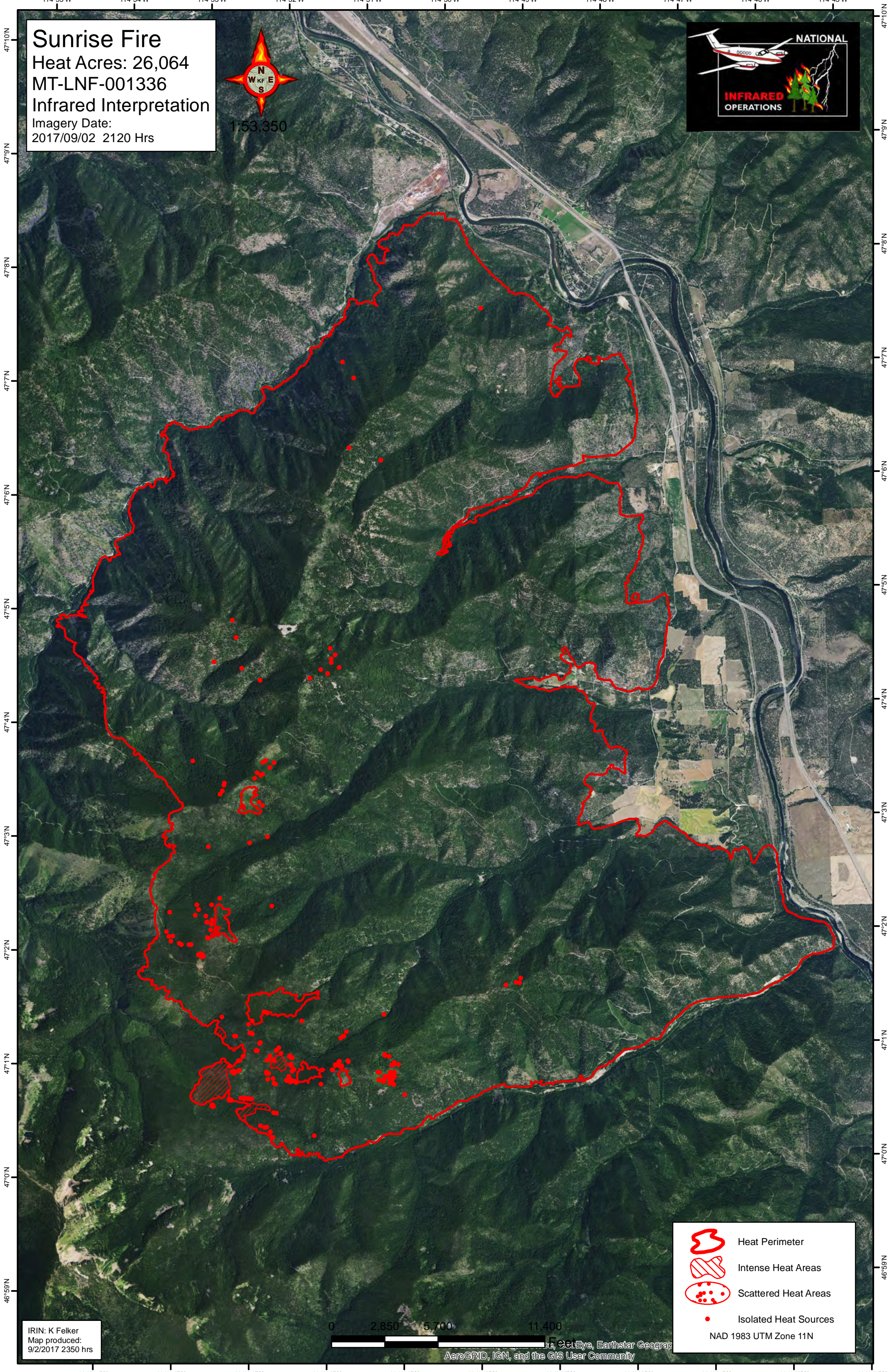


114°55'W 114°54'W 114°53'W 114°52'W 114°51'W 114°50'W 114°49'W 114°48'W 114°47'W 114°46'W 114°45'W

Sunrise Fire
Heat Acres: 26,064
MT-LNF-001336
Infrared Interpretation
Imagery Date:
2017/09/02 2120 Hrs

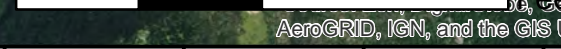


47°10'N
47°9'N
47°8'N
47°7'N
47°6'N
47°5'N
47°4'N
47°3'N
47°2'N
47°1'N
47°0'N
46°59'N





47°10'N
47°9'N
47°8'N
47°7'N
47°6'N
47°5'N
47°4'N
47°3'N
47°2'N
47°1'N
47°0'N
46°59'N

IRIN: K Felker
Map produced:
9/2/2017 2350 hrs

0 2,850 5,700 11,400



Feet
AeroGRID, IGN, and the GIS User Community

-  Heat Perimeter
-  Intense Heat Areas
-  Scattered Heat Areas
-  Isolated Heat Sources

NAD 1983 UTM Zone 11N

114°55'W 114°54'W 114°53'W 114°52'W 114°51'W 114°50'W 114°49'W 114°48'W 114°47'W 114°46'W 114°45'W