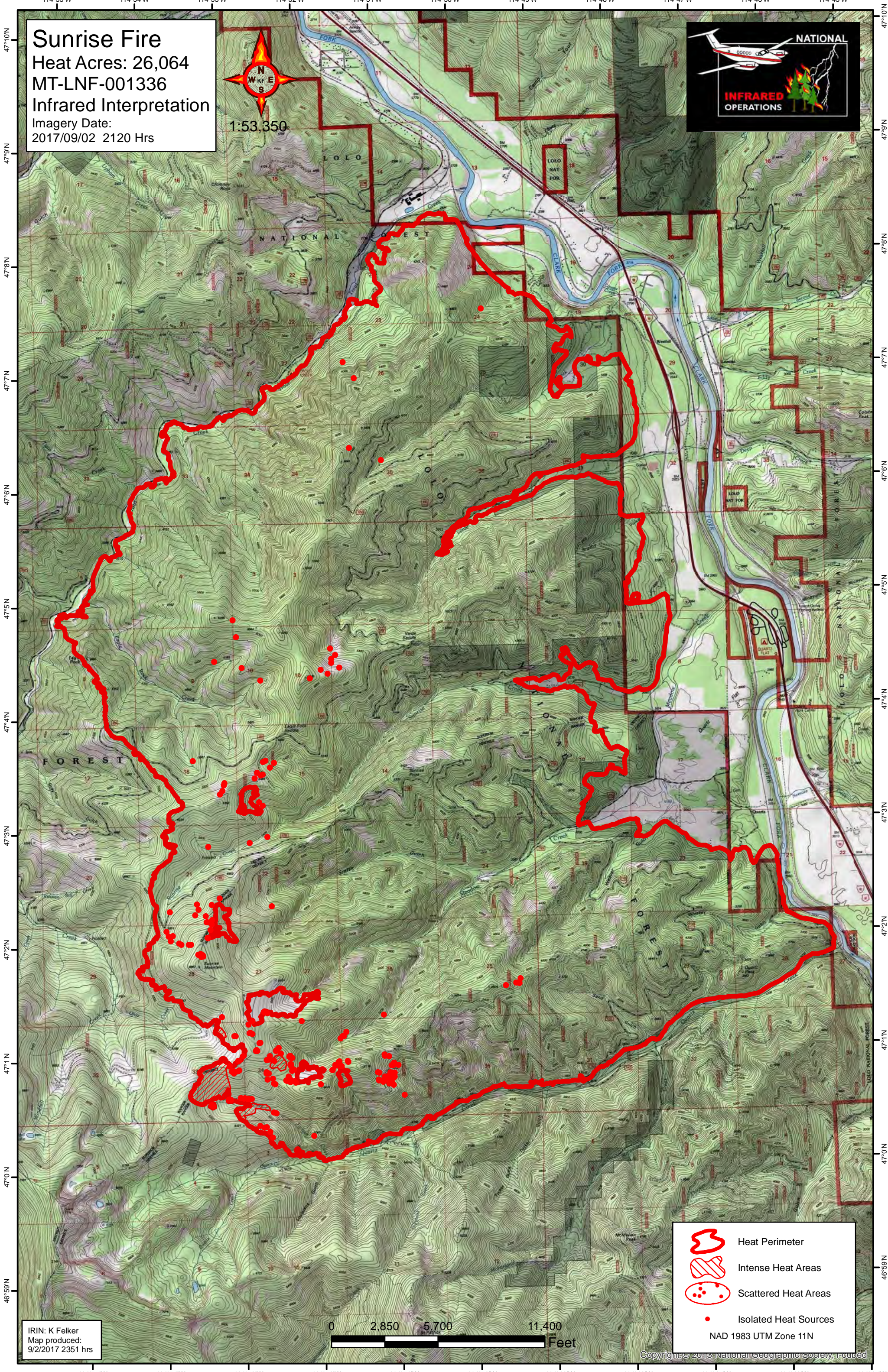






114°55'W 114°54'W 114°53'W 114°52'W 114°51'W 114°50'W 114°49'W 114°48'W 114°47'W 114°46'W 114°45'W

**Sunrise Fire**  
Heat Acres: 26,064  
MT-LNF-001336  
Infrared Interpretation  
Imagery Date:  
2017/09/02 2120 Hrs



-  Heat Perimeter
  -  Intense Heat Areas
  -  Scattered Heat Areas
  -  Isolated Heat Sources
- NAD 1983 UTM Zone 11N

IRIN: K Felker  
Map produced:  
9/2/2017 2351 hrs

0 2,850 5,700 11,400  
Feet

Copyright © 2015 National Geographic Society, Inc.

114°55'W 114°54'W 114°53'W 114°52'W 114°51'W 114°50'W 114°49'W 114°48'W 114°47'W 114°46'W 114°45'W