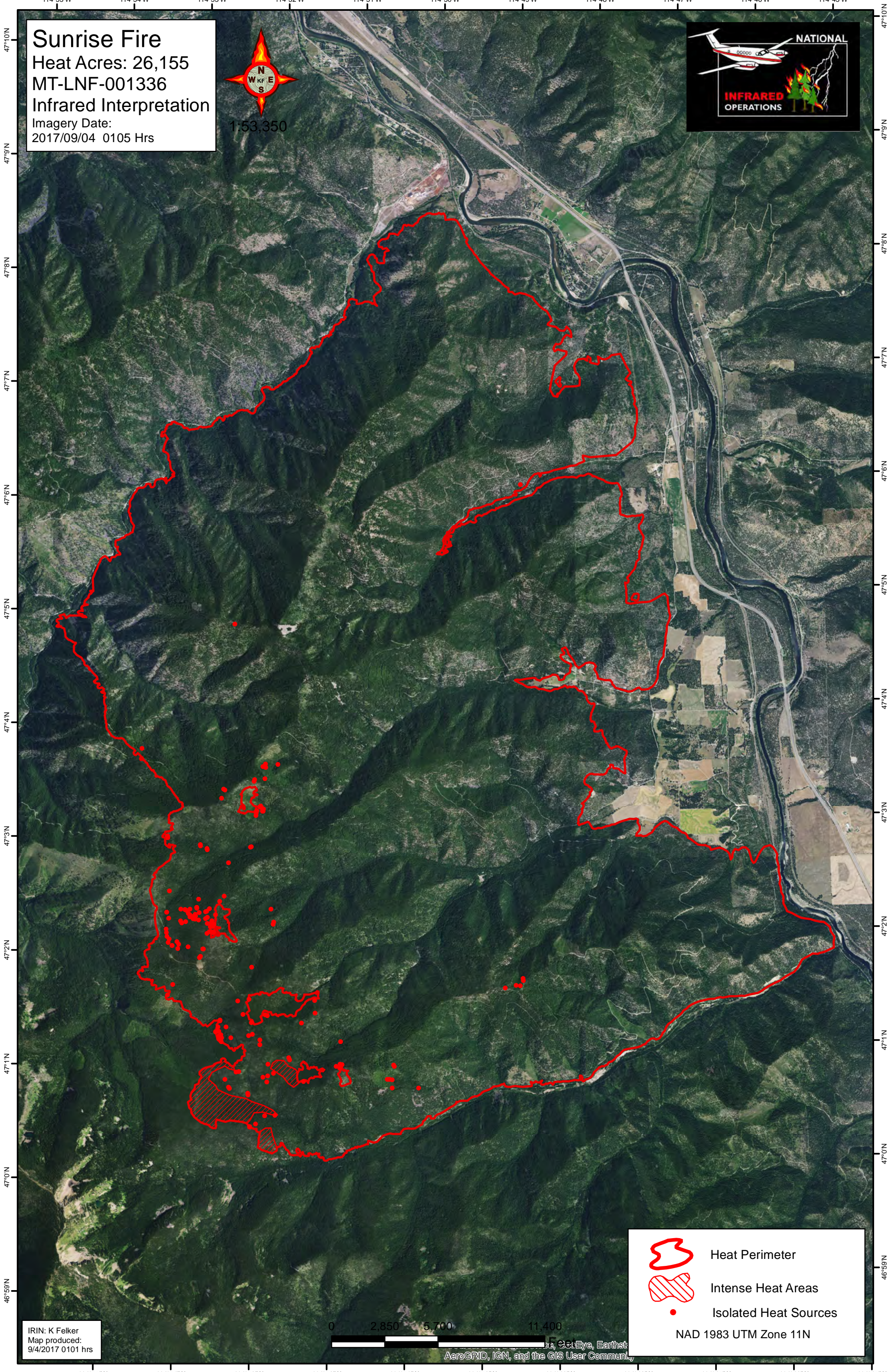

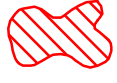



114°55'W 114°54'W 114°53'W 114°52'W 114°51'W 114°50'W 114°49'W 114°48'W 114°47'W 114°46'W 114°45'W

Sunrise Fire
Heat Acres: 26,155
MT-LNF-001336
Infrared Interpretation
Imagery Date:
2017/09/04 0105 Hrs



-  Heat Perimeter
-  Intense Heat Areas
-  Isolated Heat Sources

NAD 1983 UTM Zone 11N

IRIN: K Felker
Map produced:
9/4/2017 0101 hrs

0 2,850 5,700 11,400

GeoEye, Earthstar
AeroGRID, IGN, and the GIS User Community

114°55'W 114°54'W 114°53'W 114°52'W 114°51'W 114°50'W 114°49'W 114°48'W 114°47'W 114°46'W 114°45'W