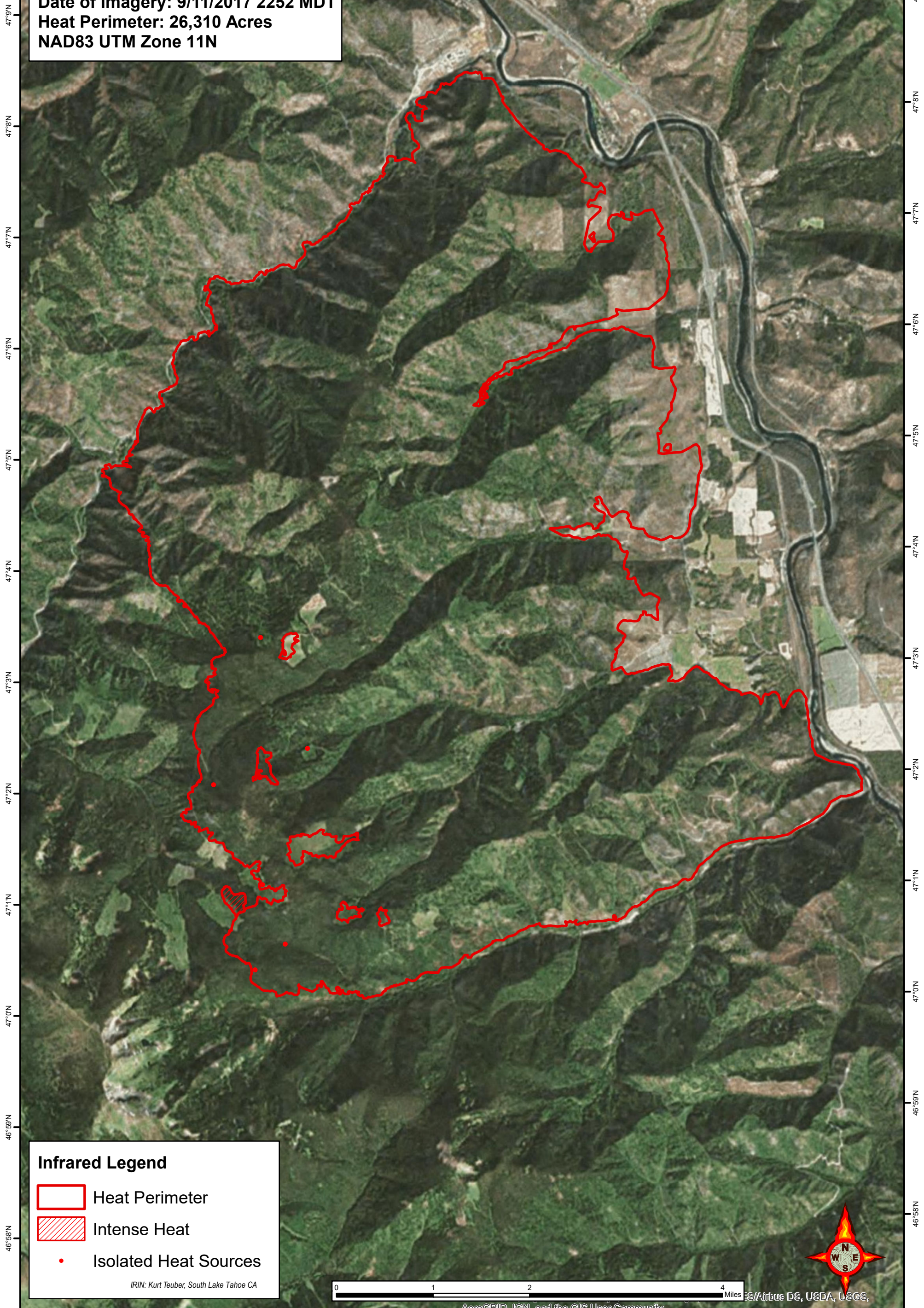





114°56'W 114°55'W 114°54'W 114°53'W 114°52'W 114°51'W 114°50'W 114°49'W 114°48'W 114°47'W 114°46'W 114°45'W

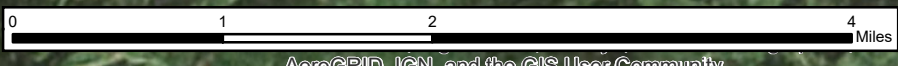
SUNRISE FIRE
MT-LNF-001336
Infrared Interpretation
Date of Imagery: 9/11/2017 2252 MDT
Heat Perimeter: 26,310 Acres
NAD83 UTM Zone 11N



Infrared Legend

-  Heat Perimeter
-  Intense Heat
-  Isolated Heat Sources

IRIN: Kurt Teuber, South Lake Tahoe CA



AeroGRID, IGN, and the GIS User Community ES/Airbus DS, USDA, USGS,

114°56'W 114°55'W 114°54'W 114°53'W 114°52'W 114°51'W 114°50'W 114°49'W 114°48'W 114°47'W 114°46'W 114°45'W