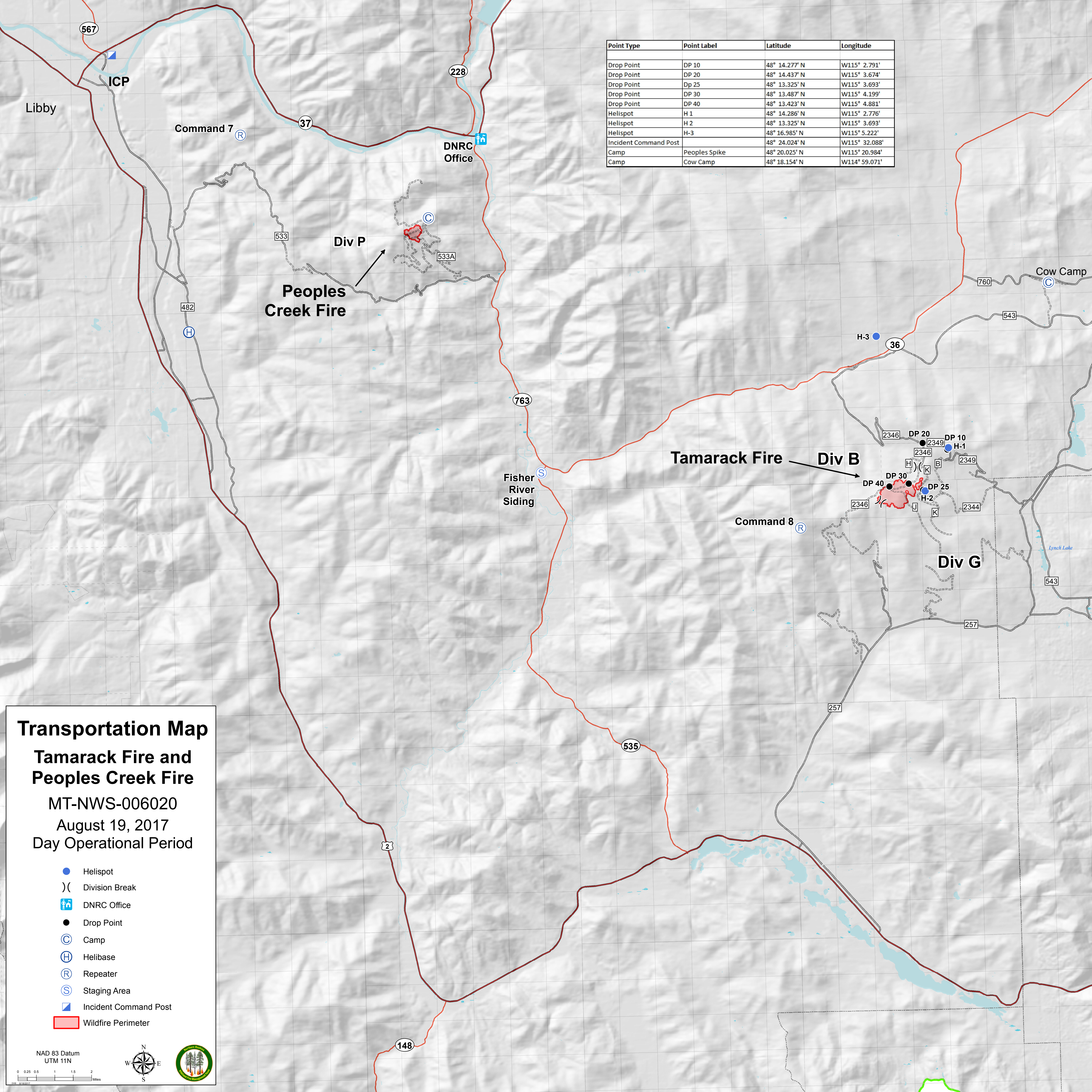


Point Type	Point Label	Latitude	Longitude
Drop Point	DP 10	48° 14.277' N	W115° 2.791'
Drop Point	DP 20	48° 14.437' N	W115° 3.674'
Drop Point	Dp 25	48° 13.325' N	W115° 3.693'
Drop Point	DP 30	48° 13.487' N	W115° 4.199'
Drop Point	DP 40	48° 13.423' N	W115° 4.881'
Helispot	H 1	48° 14.286' N	W115° 2.776'
Helispot	H 2	48° 13.325' N	W115° 3.693'
Helispot	H-3	48° 16.985' N	W115° 5.222'
Incident Command Post		48° 24.024' N	W115° 32.088'
Camp	Peoples Spike	48° 20.025' N	W115° 20.984'
Camp	Cow Camp	48° 18.154' N	W114° 59.071'



Transportation Map
Tamarack Fire and Peoples Creek Fire
 MT-NWS-006020
 August 19, 2017
 Day Operational Period

- Helispot
- Division Break
- 🏠 DNRC Office
- Drop Point
- C Camp
- H Helibase
- R Repeater
- S Staging Area
- 📍 Incident Command Post
- Wildfire Perimeter

NAD 83 Datum
 UTM 11N