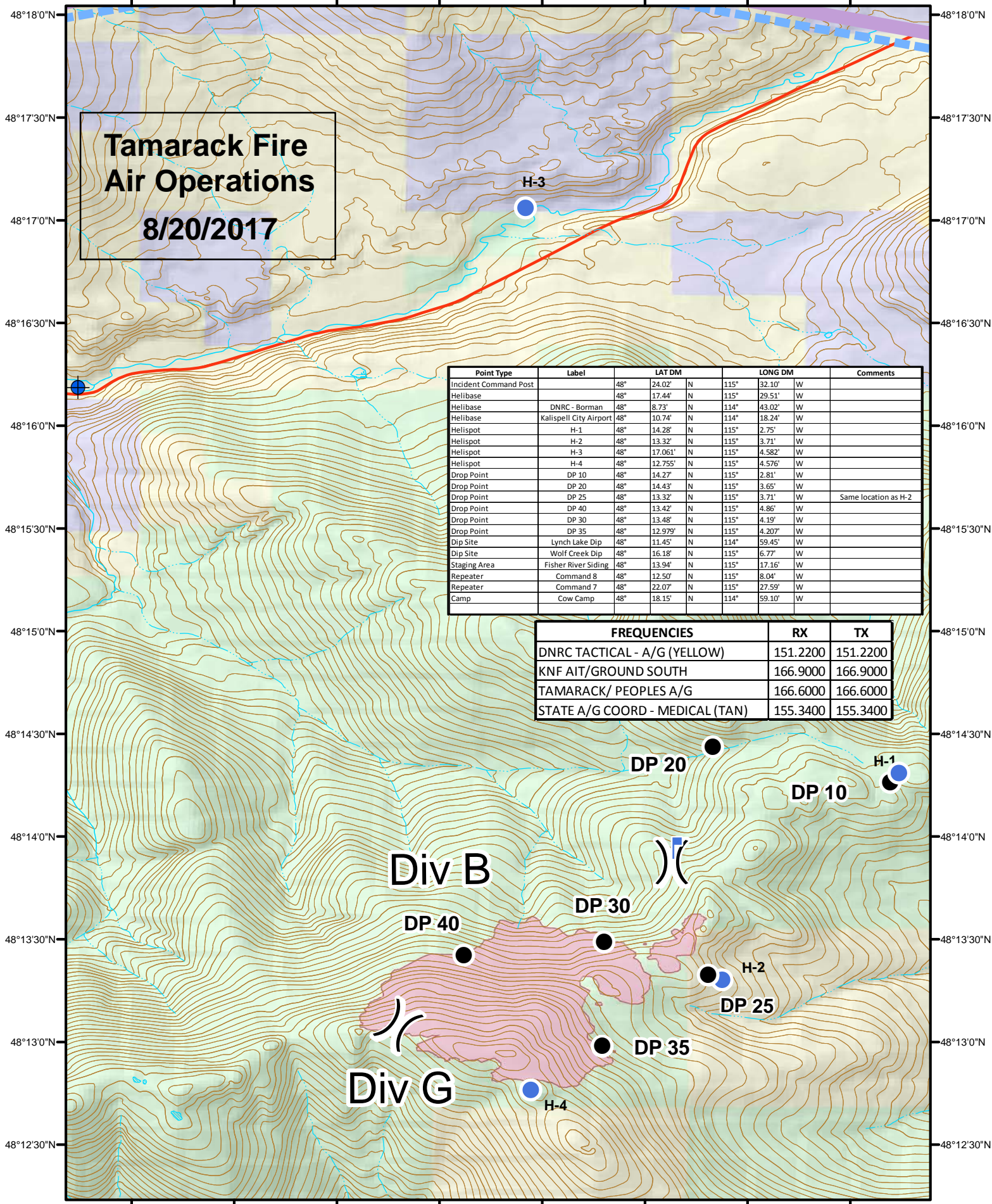


# Tamarack Fire Air Operations 8/20/2017

Point Type	Label	LAT DM	LONG DM	Comments
Incident Command Post		48° 24.02' N	115° 32.10' W	
Helibase		48° 17.44' N	115° 29.51' W	
Helibase	DNRC - Borman	48° 8.73' N	114° 43.02' W	
Helibase	Kalispell City Airport	48° 10.74' N	114° 18.24' W	
Helispot	H-1	48° 14.28' N	115° 2.75' W	
Helispot	H-2	48° 13.32' N	115° 3.71' W	
Helispot	H-3	48° 17.061' N	115° 4.582' W	
Helispot	H-4	48° 12.755' N	115° 4.576' W	
Drop Point	DP 10	48° 14.27' N	115° 2.81' W	
Drop Point	DP 20	48° 14.43' N	115° 3.65' W	
Drop Point	DP 25	48° 13.32' N	115° 3.71' W	Same location as H-2
Drop Point	DP 40	48° 13.42' N	115° 4.86' W	
Drop Point	DP 30	48° 13.48' N	115° 4.19' W	
Drop Point	DP 35	48° 12.979' N	115° 4.207' W	
Dip Site	Lynch Lake Dip	48° 11.45' N	114° 59.45' W	
Dip Site	Wolf Creek Dip	48° 16.18' N	115° 6.77' W	
Staging Area	Fisher River Siding	48° 13.94' N	115° 17.16' W	
Repeater	Command 8	48° 12.50' N	115° 8.04' W	
Repeater	Command 7	48° 22.07' N	115° 27.59' W	
Camp	Cow Camp	48° 18.15' N	114° 59.10' W	

FREQUENCIES	RX	TX
DNRC TACTICAL - A/G (YELLOW)	151.2200	151.2200
KNF AIT/GROUND SOUTH	166.9000	166.9000
TAMARACK/ PEOPLES A/G	166.6000	166.6000
STATE A/G COORD - MEDICAL (TAN)	155.3400	155.3400



█ Wildfire Daily Fire Perimeter   
 ● Dip Site   
 ● Helispot   
  Lookout   
 )) ( Division Break

