

# Incident Action Plan

## Tamarack

MT-NWS-006020 / PNK9HX / 957014

## Peoples Creek

MT-NWS- 006024 / PNK9KY / 957015



Weyerhaeuser



### Northern Rockies Wildland Fire Management Team

**Incident Commander**

**Diane Hutton**

**Michael Davin (t)**

**Day Shift**

**Wednesday, August 23, 2017**

**0700 - 2100**

<b>INCIDENT OBJECTIVES</b>	1. Incident Name	2. Date	3. Time
	Tamarack/Peoples Creek	08/22/2017	1800

4. Operational Period: 08/23/2017 Operational Period: 0700 - 2100

5. General Control Objectives for the Incident

**Strategy:** Implement a full suppression strategy in minimizing fire spread in the management of these fires. Pursue weather, natural barriers, and terrain opportunities to safely establish containment.

**Leaders Intent:**

- Maintain incident responder and public safety as the top priority. Ensure all actions are based on the probability of success while minimizing exposure to firefighters.
- Precaution measures must be taken to prevent introduction and spread of noxious weeds.
- Precaution measures must be taken to prevent introduction and subsequent spread of aquatic nuisance species or pathogens.
- Establish and monitor cost effective methods of accomplishing objectives, keep cost effectiveness as an important part of your decision making.
- Maintain and enhance relationships with private landowners, agencies, cooperators, and stakeholders while providing timely and consistent information.

**Incident Requirements:**

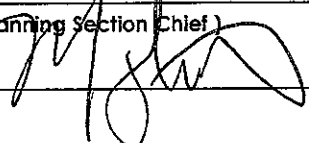
- Assist in initial attack outside of the delegated initial attack area.
- Where opportunity and safety allow, direct attack the fire edge by establishing appropriate tactics to minimize fire spread and provide for the protection of the firefighters.
- Resource advisors and any technical specialists representing the DNRC will be included in operational planning and decision making activities as necessary
- Utilize the weed washing station for vehicles and equipment to prevent introduction and spread of noxious weeds.
- Clean snorkels, buckets and other water carrying devices to prevent introduction and spread of aquatic nuisance species or pathogens.
- Liaison Officers and Public Information Officers will provide communications to agencies, cooperators and stakeholders to maintain and establish relationships.
- Command and General staff will evaluate daily on team configuration and team infrastructure based on fires complexities. Team will work with the Incident Business Advisors to ensure guidelines are being followed to establish and monitor cost effective methods of accomplishing objectives.
- Personnel assigned to this incident must be sensitive to local residents by respecting individuals, private property and public interests.

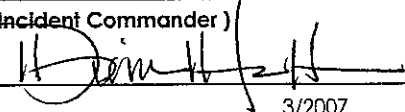
6. Weather Forecast for Period See Attached Weather Forecast

7. General Safety Message: See Attached Safety Message

8. Attachments (mark if attached)

- |   |  |  |
|---|--|--|
| <input checked="" type="checkbox"/> Organization List - ICS 203     | <input checked="" type="checkbox"/> Weather Forecast         | <input checked="" type="checkbox"/> Safety Message     |
| <input checked="" type="checkbox"/> Div. Assignment Lists - ICS 204 | <input checked="" type="checkbox"/> Fire Behavior Forecast   | <input type="checkbox"/> Demob Process                 |
| <input checked="" type="checkbox"/> Communications Plan - ICS 205   | <input checked="" type="checkbox"/> Incident Map             | <input checked="" type="checkbox"/> Unit Log - ICS 214 |
| <input checked="" type="checkbox"/> Medical Plan - ICS 206          | <input checked="" type="checkbox"/> Air Operations-- ICS 220 |  |

9. Prepared by (Planning Section Chief)  
Mark Glos 

9. Approved by (Incident Commander)  
Diane Hutton 

ORGANIZATIONAL STRUCTURE CHART		9. Operations Section	
1. Incident Name Tamarack / Peoples Creek		Branch Chiefs	
		Operations	
2. Date: 08/23/2017		Ashley Sites (8/27)	Gabe Holguin (t) (8/30)
		Kevin Smith (t) (8/27)	
4. Operational Period: 0700 - 2100		Divisions	
5. Incident Commander and Staff		P	Sean Whalen (8/30)
Incident Commander	Diane Hutton (8/27) Michael Davin (t) (8/27)	B	Jonathan White (8/27)
Safety Officer	Chris Casey (8/27) / Adam Carr (t) (8/27) Kevin Boness (8/27)	G	Joshua Barta (8/27) Willie Knudsen (t) (8/27)
Information Officer	Glenda Scott (8/27) Robert MacGregor (8/27)		
Liaison	Todd Manley (8/27)		
6. Tribal and Agency Representatives			
USFS	Jason Cress		
USFS	Nate Gassman		
DNRC	Dave Marsh		
REAF	Jacob Somerset		
7. Planning Section			
Chief	Mark Glos (8/27)		
RESL	Jim Stiteler (8/27)		
DMOB	Patty Bates (8/27)		
ITSS	Rob Bowles (t) (8/25)		
SITL	Vicki Stephens (8/27) Greg Dillon (t) (8/27)		
GISS	Ray Backstrom (8/27) Howard Williams (t) (8/27) Diane Burbank (8/27)		
FBAN	Boyd Lebeda (9/3)		
IMET	Patrick Gilchrist (8/27)	A. Air Operations Branch	
8. Logistics Section		Branch Director	
Chief	Russ Riebe (8/27)	Air Attack Supervisor	
BCMG	Donovan Suko (t) (8/28)	Helibase Manager	
SUPL	Kimberly Burch (8/28)	Air Support Supervisor	Steve Croy (8/28)
FACL			
GSUL	Jeremiah Greene (8/28)	Air Tanker Coordinator	
EQPM	Tim Oland (t) (8/29)		
COML	Jim Olivarez (8/27) / Chris Gentili (t) (8/27)	10. Finance	
MEDL	Linda Barbee (8/27)	Chief	Joyce Anderson (8/27)
FUDL	Dana Stone (8/27)	PTRC	Keith O'Laughlin (9/1)
ORDM	Janis Bouma (t) (8/27)	EQTR	Jane Taylor (9/3)
SEC2	Christopher Syler (8/29) Brian Robbins (8/28)	TIME	Erin Lally (8/27)
Prepared by: James Stiteler RESL <i>J. Stiteler</i>			



# Tamarack/Peoples Creek Weather Forecast



**FORECAST NO:** 09

**NAME OF FIRE:** Tamarack\  
Peoples Creek Fire

**PREDICTION FOR:** Day **SHIFT**, Wed. 8/23/17

**UNIT:** MT DNRC NW Land Office

**SIGNED:**   
Patrick Gilchrist  
**Incident Meteorologist**

**TIME AND DATE**

**FORECAST ISSUED:** 1900 August 22, 2017

**WEATHER DISCUSSION:** Today will be hot, dry, and unstable as the upper ridge remains overhead. An approaching low pressure system will bring increasing chances for light showers and mainly dry thunderstorms during the overnight hours. The associated cold front will push through around 0400 Thursday morning, ushering in breezy conditions as well as continued shower and thunderstorm activity on Thursday. .

**WEATHER FORECAST FOR Wednesday (DAY-SHIFT):**

**WEATHER:** Increasing clouds through the afternoon. Increasing to 50% cloud cover by 1800. Areas of smoke.

**TEMPERATURES:** Maximum 80-85.

**HUMIDITY:** Minimum 17-22%.

**20 FT WINDS:**

**RIDGETOP** – Southwest 8-12 mph increasing to southwest 10-15 mph with gusts to 18 mph during the afternoon.

**SLOPE/VALLEY** – Downslope/downvalley 2-5 mph through 1000, then becoming upslope/upvalley 5-10 mph. Stronger upslope winds of 10-15 mph in chutes and chimneys. General winds will interact with the upslope winds at times during the afternoon, making for possible erratic wind directions.

**HAINES INDEX:** 5 moderate

**LAL:** 1

**Tonight:**

Mostly cloudy. Widespread light showers and thunderstorms after 2400. LAL: 4. Min temps 56-61. Max RH 65-70%. Valley winds becoming downslope/downvalley 2-5 mph around 2000. Ridgetop winds southwest 8-12 mph. Gusty erratic outflows to 30 mph possible with thunderstorms. CWR 30%.

**OUTLOOK FOR Thursday:**

Mostly cloudy. Widespread light showers and thunderstorms through 0900. Then scattered light showers and mainly dry thunderstorms through the morning, decreasing to isolated in the afternoon. Highs 69-74. Min RH 29-34%. Ridgetop winds: west-southwest 18-23 mph with gusts to 28 mph during the afternoon. Slope valley winds: becoming upslope/upvalley 5-10 mph. General winds will interact with the upslope winds at times, making for possible erratic wind directions on the downwind side of the fires.

**Haines Index:** 3 very low

**CWR:** 30%

**LAL:** 4.

**EXTENDED FORECAST (Friday through Sunday):**

Friday will be breezy, cool, behind the now exiting low pressure system. RH will begin to lower on Friday as a dry airmass builds back in. Saturday into Sunday will see increasing temperatures, lowering humidity, and lighter winds as ridging rebounds back into northwest Montana.

# Tamarack / Peoples Creek Fire General Weather Outlook

For Planning Purposes Only, see the IAP for the Official Forecast

Forecast made Tuesday, August 22 - Incident Meteorologist (IMET) Patrick Gilchrist

	WED	THU	FRI	SAT	SUN	MON
	23-Aug	24-Aug	25-Aug	26-Aug	27-Aug	28-Aug
Clouds @ 1500 (%)	25	60	15	10	0	0
Avg. Max Temp (F)	85	74	76	79	83	84
Precip Chance (%)	0	60	0	0	0	0
LAL	1	4	1	1	1	1
Ridge Wind (mph)	15	23	15	10	8	8
Wind Direction*	SW	WSW	WSW	WSW	SSW	SW
Min Humidity (%)	17	29	17	18	18	19
Haines Index	5	3	3	2	3	4

KEY:	Moderate Burning Conditions	Take Caution - Critical Burning Conditions	Extreme Burning Conditions
	Clouds	> 31 %	15 to 30 %
Avg Max Temp	< 80 F	80 to 85 F	> 85 F
Precip Chance	> 30%	20 to 30%	< 20 %
LAL	<4	4	> 4
Ridge Wind	< 10 mph	10 to 20 mph	> 20 mph
Min Humidity	> 25 %	16 to 25 %	< 16 %
Haines Index	2, 3, 4	5	6
<b>5 or more EXTREME blocks in a day equals the potential for a Critical Weather Day</b>			

## FIRE BEHAVIOR FORECAST

<b>FORECAST NUMBER:</b> #9	<b>TYPE OF FIRE:</b> Wildland Fire
<b>FIRE NAME:</b> Tamarack & Peoples Creek	<b>OPERATIONAL PERIOD:</b> Day: 08/23/17
<b>DATE ISSUED:</b> 08/22/17	<b>TIME ISSUED:</b> 1900 hrs
<b>UNIT:</b> Libby Unit/Northwest Land Office, MT Dept. of Natural Resources & Conservation, MT	<b>SIGNED:</b> Boyd Lebeda, FBAN <i>Boyd Lebeda</i>

### INPUTS

**WEATHER SUMMARY:** See Attached Fire Weather Forecast for further information.  
Kootenai\_FDRA#1 Above 4000ft ERC Observed for 08/22/17 **67-Extreme**

### OUTPUTS

#### FIRE BEHAVIOR

##### GENERAL:

- **Today's fire environment conditions approach meeting the thresholds identified on the Kootenai\_FDRA#1 Pocket Card.** Combinations of these factors greatly increase fire behavior: 20 foot windspeed >15mph; minimum RH <25%; maximum temperature >85 degrees; and 1000 hour fuel moisture <15%.
- Critical weather factors will also be met today. <30% cloud cover; LAL 4; and Haines Index 5.
- A **Cold Front with light showers and thunderstorms** is forecast for early Thursday morning. A Cold Front is a Critical Weather Event for the Northern Rockies and is associated with past large fire events.
- Fuel Moistures estimated: 100hr 9%, 1000hr 9%, measured: bunchgrasses 37-92%, huckleberry 98-132%, Lodgepole pine 114%, Douglas-fir 109% (@ Tamarack) to 193% (@ Peoples Cr.), Serviceberry 46%.
- Topography consists of moderately steep, rocky, deep drainages with plenty of chimneys and chutes.
- Expect surface fire (backing, creeping & smoldering) in heavy dead/down fuels and open grassy areas, with single/group torching. At 20% RH group tree torching is possible. Spotting distances up to 2000 feet are possible with maximum forecast winds. Rollouts with slope reversals possible.
- Rates of Spread (ROS) in Fuel model 2: ~40 ch/hr, Fuel model 8: <3 ch/hr, Fuel model 9: ~12 ch/hr & Fuel Model 10: ~9 ch/hr. Backing ROS <1 ch/hr.
- Flame Lengths (FL) Fuel model 2: ~7 ft, Fuel model 8: <2 ft, Fuel model 9: ~4 ft, Fuel model 10: ~6 ft, Backing FLs <2 ft.
- Burn period has been estimated from 0900-2100 hrs with peak from about 1300-1900 hrs.
- Probability of Ignition on unshaded south aspects with fine dead fuel moisture of 3% is +/-85%.

**SPECIFIC: Ensure posted lookouts are in a good safe spot where they can observe the fire activity & weather. Take hourly weather observations, call them in or bring them to ICP at end of shift.**

**Tamarack Divs B & G:** Higher winds today along with warm temps and low RHs will increase the interior fire activity and smoke production. Forecast southwest are favorable for DIV G. Most of DIV B is on the lee side of the ridge and will not be in slope-wind alignment. Fire behavior will still consist of backing, creeping & smoldering with isolated single/group tree torching, throughout the fire area. Stay heads up for the possibility of interior torching throwing spot fires across the line. Heavy dead/down fuels and especially jackpots will continue burn. Rollouts are possible as the fire backs down onto steeper slopes. Reburns possible where surface fire and preheated canopy fuels exist.

**Potential New Starts:** Fires have the potential to go big fast with heavy, dead/downed fuels, ladder fuels and dead standing fuels, especially with predicted low RHs and winds. Size up the fire behavior before engaging.

**AIR OPERATIONS:** Active thermal belt breaking out by 1000.

**Standard Fire Fighting Order #1...Keep informed on fire weather conditions and forecasts.**

**Watch for alignment of slope, winds and fuels for most active fire behavior.**

**Develop trigger points for your disengagement if fire behavior threatens your safety.**

**PLEASE GIVE FEEDBACK, it's greatly appreciated!**

<b>ASSIGNMENT LIST</b>	<b>1. Branch</b>	<b>2. Division/Group</b>
		P

<b>3. Incident Name:</b> PEOPLES CREEK	<b>4. Operational Period</b> Date: 08/23/2017	<b>Time:</b> 0700 - 2100
---	--	--------------------------

**5. Operations Personnel**

<b>Operations Chief</b>	Ashley Sites / Gabe Holguin (t) Kevin Smith (t)	<b>Division/Group Supervisor</b>	Sean Whalen
<b>Branch Director</b>		<b>Air Support Group Supervisor</b>	Steve Croy

**6. Resources Assigned This Period**

Strike Team/Task Force/ Resource Designator	Last Shift	Leader	No. Pers.	Trans. Needed	Drop Off PT./Time	Pick Up PT./Time
E-49 ENG6 Troy Fire Service	8/29	Mark Bennett	3	N	ICP 0700	ICP 2100

**7. Control Operations**

**Task:** Patrol Peoples Creek fire.

**Purpose:** Ensure Peoples Creek fire remains in established control lines.

**End State:** Threats to timber values and electronic site are eliminated and no new growth occurs.

**8. Special Instructions**

**9. Communications**

Function	Frequency - RX	Frequency - TX	Tone	Channel	Comments
Command	171.0375	163.8250	TX / 127.3	7	
Command	168.1000	170.4500	TX / 127.3	8	
Command					
Tactical	168.0500	168.0500	127.3	1	
Air to Ground	166.6000	166.6000		13	

Prepared by (RESL) James Stiteler <i>[Signature]</i>	Approved by (RSC) Mark Glos <i>[Signature]</i>	Date 08/22/2017	Time 2000
---	---	--------------------	--------------

<b>ASSIGNMENT LIST</b>	1. Branch	2. Division/Group
------------------------	-----------	-------------------

3. Incident Name <b>TAMARACK</b>	4. Operational Period Date: 8/23/2017	Time: 0700 - 2100
-------------------------------------	--	-------------------

5. Operations Personnel			
Operations Chief	Ashley Sites / Gabe Holguin (t) Kevin Smith (t)	Division/Group Supervisor	Jonathan White
Branch Director		Air Support Group Supervisor	Steve Croy

6. Resources Assigned This Period						
Strike Team/Task Force/ Resource Designator	Last Shift	Leader	No. Pers.	Trans. Needed	Drop Off PT./Time	Pick Up PT./Time
C-12 HC2IA Overland	9/2	Lorra Hedrick	19	N	ICP 0700	ICP 2100
E-20 WTT2 Aurora Tender 13	8/29	Eric Brown	1	N	ICP 0700	ICP 2100
E-84 WTS2 DS Jr Trucking	9/1	Jeremiah Horseman	1	N	ICP 0700	ICP 2100
E-72 ENG5 Mountain Camel	8/30	Dewayne Medicine Elk	3	N	ICP 0700	ICP 2100
E-73 ENG3 Hart Ventures	8/30	Dale Tatsey	3	N	ICP 0700	ICP 2100
TFLD	8/29	Ed McDonald	1	N	ICP 0700	ICP 2100
TFLD (t)	8/25	Matt Mahe	1	N	ICP 0700	ICP 1600
HEQB	8/29	Cory Anderson	1	N	ICP 0700	ICP 2100
SOF2 (Available to division G)	8/31	Craig Cowie	1	N	ICP 0700	ICP 2100
SOF2	8/27	Chris Casey	1	N	ICP 0700	ICP 1200
EMTF	8/28	Heather Swain	1	N	ICP 0700	ICP 2100
EMTF	8/29	James Bartlett	1	N	ICP 0700	ICP 2100

**7. Control Operations**

**Task:** Continue to hold and improve completed line. Mop-up one chain in where appropriate.

**Purpose:** Contain fire to proposed control lines to eliminate fire growth. Eliminate threats to timber values and reduce fire fighter exposure to identifiable threats.

**End State:** Threats to timber values are eliminated, and fire shows no additional growth.

**8. Special Instructions**

Wash all heavy equipment before leaving the division.

9. Communications					
Function	Frequency - RX	Frequency - TX	Tone	Channel	Comments
Command	168.1000	170.4500	TX / 127.3	8	
Command					
Command					
Tactical	168.2000	168.2000	127.3	2	
Air to Ground	166.6000	166.6000		13	

Prepared by (RESL) James Stiteler	Approved by (PSC) Mark Glos	Date 08/22/2017	Time 2000
--------------------------------------	--------------------------------	--------------------	--------------



<b>ASSIGNMENT LIST</b>	1. Branch	2. Division/Group
		<b>G</b>

3. Incident Name <b>TAMARACK</b>	4. Operational Period Date: 8/23/2017      Time: 0700 - 2100
-------------------------------------	---

**5. Operations Personnel**

Operations Chief	Ashley Sites / Gabe Holguin (t) Kevin Smith (t)	Division/Group Supervisor	Joshua Barta / Willie Knudsen (t)
Branch Director		Air Support Group Supervisor	Steve Croy

**6. Resources Assigned This Period**

Strike Team/Task Force/ Resource Designator	Last Shift	Leader	No. Pers.	Trans. Needed	Drop Off PT./Time	Pick Up PT./Time
C-11 HC2IA Slide Mountain	8/26	Josh Whitman	19	N	ICP 0700	ICP 2100
C-14 HC2IA Bear Mountain	8/26	Donald Henry	20	N	ICP 0700	ICP 2100
C-15 HC2 Rocky Mntn Fire Co	8/23	Kimball Nutt	20	N	ICP 0700	ICP 1500
E-48 ENG3 DS Fire Suppression	8/29	Rob Dagnall	3	N	ICP 0700	ICP 2100
E-50 ENG6 Rocky Mntn Fire Sup	8/29	Pat Marnin	3	N	ICP 0700	ICP 2100
E-52 SKG3 Soft Track Attack	8/29	Dave Miller	2	N	ICP 0700	ICP 2100
E-53 SKG3 TBC Timber	8/29	Brian Anderson	2	N	ICP 0700	ICP 2100
E-22 WTS2 Oxford	8/29	Richard Brown	2	N	ICP 0700	ICP 2100
E-85 WTS2 Fire Specialties	9/1	Randy Skelton	1	N	ICP 0700	ICP 2100
TFLD	8/25	Rich Sack	1	N	ICP 0700	ICP 2100
TFLD (t)	8/25	Garrett Alan	1	N	ICP 0700	ICP 1600
TFLD (t)	8/30	Chris Kottke	1	N	ICP 0700	ICP 2100
SOF2 (Available to division B)	8/31	Craig Cowie	1	N	ICP 0700	ICP 2100
EMPF	9/4	Blaine Larsen	1	N	ICP 0700	ICP 2100
EMTF	8/29	Richard Goldman	1	N	ICP 0700	ICP 2100

**7. Control Operations**

**Task:** Hold and improve completed line. Mop-up one chain in where appropriate.

**Purpose:** Contain fire to proposed control lines to eliminate fire growth. Eliminate threats to timber values and reduce fire fighter exposure to identifiable threats.

**End State:** Threats to timber values are eliminated, and fire shows no additional growth.

**8. Special Instructions**

Wash all heavy equipment before leaving the division.

**9. Communications**

Function	Frequency - RX	Frequency - TX	Tone	Channel	Comments
Command	168.1000	170.4500	TX / 127.3	8	
Command					
Tactical	168.6000	168.6000	127.3	3	
Air to Ground	166.6000	166.6000		13	

Prepared by (RESL) James Stiteler <i>[Signature]</i>	Approved by (PSC) Mark Glos <i>[Signature]</i>	Date 08/22/2017	Time 2000
---	---	--------------------	--------------

# AIR OPERATIONS SUMMARY

Prepared By: Steve Croy - ASGS

Prepared Date: 08/22/2017

Prepared Time: 1900

1. INCIDENT NAME: Tamarack / Peoples Creek	2. OPS PERIOD DATE: August 23, 2017	START TIME: 0800	END TIME: 2000	SUNRISE KIC/KDC: 0643/0647	SUNSET KIC/KDC: 2036/2041
---	--	---------------------	-------------------	-------------------------------	------------------------------

<b>3. REMARKS (Safety Notes, Hazards, Air Operations Special Equipment, etc.):</b> - Communicate known flight hazards to your pilot: wires, towers, snags, and other aircraft. - Aircraft requests will be made thru Division to Kootenai Dispatch. - Be aware of NOTAMs for any neighboring TFR's & helicopter activity at area airports. - Never enter any TFR without a clearance. - Late Season Operations: Tactical Aviation Operations from August 15 through the season's end to be conducted only from official sunrise to official sunset. This does not apply to ferry flights from/to base. <b>Aquatic Invasive Prevention—Know the Protocols!</b>	<b>4. READY ALERT AIRCRAFT:</b> Contact Kootenai Dispatch	<b>5. TFR's:</b> Tamarack & Peoples Ck: <b>120.200</b> (last day TFR will be in place)
---	--	---

6. PERSONNEL	NAME	PHONE #	Frequencies	AM	FM TX/RX	8. FIXED-WING ATGS: Order thru Dispatch
ASGS DNRC DNRC @ S27 HEB1 @ Libby	Steve Croy Jesse Best Kevin Devine Mike O'Leary	540-230-2568 406-212-4822 406-212-5839 239-336-9789	Air Guard Nat'IFF FNF/DNRC PRI A/G IA A/A (KIC) IA A/G 2 (KIC) IA A/G 3 (KIC) DNRC Yellow FNF Direct Tamarack/Peoples Ck A/A A/G	127.0250	168.6250/110.9 168.650/110.9 169.1250 166.9000 168.3875 151.2200 164.3750 120.200 166.6000	AIRTANKERS- Order thru Dispatch  LEAD PLANES- Order thru Dispatch  <b>FIXED WING:</b> ATGS: QOS at Libby (S59) & 9AK at Kalispell (GPI). ATGS also available from COE DETECT—812 (KDC) ORDER, 29X or 7DL (KIC) ORDER, 91M (DNRC) SEATS: On at COE (2-FireBoss)
Kootenai Dispatch Center Kalispell Interagency Dispatch		406-283-7740 406-758-5260	<u>KNF Flight Follow</u> KNF Libby East Zone KNF Ksanika KNF West IA A/A (KDC)	128.1000	172.2500/123.0 171.2625/123.0 171.3875/123.0	AIS treatment locations: High pressure/Hot water rinse—Kalispell (S27), Libby (S59)

FAA N#	TY	MAKE/ MODEL	BASE	MGR	START	REMARKS	Identifier	T Y	MAKE/ MODEL	BASE	AVAIL	START	REMARKS
N518MF ABC/Tamarack	3	A-Star 350B3	Libby HB S59		0830	Ute Mtn EU	Raven 150	1	UH-60 Blackhawk	Kalispell S27		0830	Nat'l Guard will always work in tandem with 94M
N94M DNRC IA	2	UH-1H	Kalispell S27		0830	DNRC	Fixed Wing:						
N87M DNRC IA	2	UH-1H	Kalispell S27		0830	DNRC	4QS		Aero Commander	Libby S59		0830	
C-ALK DNRC IA	2	Bell 212HP	Kalispell S27		0830	Alberta Rapattack	9AK		Aero Commander	GPI		0830	

**INCIDENT RADIO COMMUNICATIONS PLAN I-205**

**1. INCIDENT NAME**  
Tamarack


**2. DATE/TIME PREPARED**  
8/22/2017 1700

**3. OPERATIONAL PERIOD DATE/TIME**  
8/23 0700 - 8/23 2100

**4. BASIC RADIO CHANNEL UTILIZATION**

Ch #	Function	Channel Name	Assignment	RX Freq	N/W	RX Tone/NAC	TX Freq	N/W	TX Tone/NAC	Mode Analog (A) Digital (D) Mixed (M)	Remarks
1	TAC	TAC 1	DIV P	168.0500	N	127.3	168.0500	N	127.3	A	
2	TAC	TAC 2	DIV B	168.2000	N	127.3	168.2000	N	127.3	A	DIV B TAC
3	TAC	TAC 3	DIV G	168.6000	N	127.3	168.6000	N	127.3	A	DIV G TAC
4	TAC	TAC 4	I/A	166.7250	N	127.3	166.7250	N	127.3	A	
5											
6											
7	COMMAND	CMD 7	COMMAND	171.0375	N		163.8250	N	127.3	A	ICP
8	COMMAND	CMD 8	COMMAND	168.1000	N		170.4500	N	127.3	A	TAMARACK
9	DNR TAC	DNR TAC1	DNRC TAC	151.4600	N		151.4600	N		A	DNRC IA TAC
10	DNRC RPTR	CALX	DNRC RPTR	151.2650	N		159.4050	N	114.8	A	DNRC CALX RPTR
11	STATE FIRE MUTUAL AID	RED	STATE MUTUAL AID	154.0700	N		154.0700	N	156.7	A	STATE FIRE MUTUAL AID
12	DNRC TAC A/G	YELLOW	AIR TO GROUND	151.2200	N		151.2200	N		A	DNRC TACTICAL A/G
13	TAMARACK A/G	TAM A/G	AIR TO GROUND	166.6000	N		166.6000	N		A	FIRE A/G
14	KNF A/G SOUTH	KNF A/G	AIR TO GROUND	166.9000	N		166.9000	N		A	CH
15	AIR MEDICAL	TAN	AIR MED	155.3400	N		155.3400	N		A	AIR MEDICAL/LIFE FLIGHT A/G
16	AIR GUARD	AIRGUARD	AIR EMERGENCY	168.6250	N		168.6250	N	110.9	A	AIR EMERGENCY

**5. Special Instructions:**

**6. I-205 Prepared By:** Communications Unit Leader      **Name:** Chris Gentili      **Signature:** 

# Tamarack / Peoples Creek

## Phone List


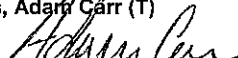


IC	(406) 293-3486
LOFR	(406) 293-8351
Finance	(406) 293-8263
Plans	(406) 293-4463
Medical	(406) 293-6561
Communications	(406) 293-6963
Ground Support	(406) 293-9296

1. Incident/Project Name		2. Operational Period							
Tamarack and Peoples Creek Fires		Date/Time 8/23/2017 Day shift 0700-2100							
3. Ambulance Services									
Name	Complete Address	Phone & EMS Frequency		Advanced Life Support (ALS) Yes No					
Libby Vol Ambulance	307 Montana Ave, Libby MT	406-293-5582		X					
Troy Vol Ambulance	210 Montana Ave, Troy MT	406-295-6605		X					
4. Air Ambulance Services									
Name	Phone	Type of Aircraft & Capability							
ALERT AIR AMBULANCE	911	Rotary wing, Paramedics, flight nurse, Night Vision. Talk on A/G Tan Channel # 15.							
LIFE FLIGHT	911	Fixed wing and Rotary wing. Paramedic and flight nurse. Night vision. Land at Libby airport. Talk on A/G Tan Channel # 15.							
TWO BEAR AIR	911	Rotary wing. Rescue and hoist, Night Vision. Paramedic on board. Will extract & deliver to an ambulance for transport. Talk on A/G Tan Channel # 15.							
5. Hospitals									
Name Complete Address	GPS Datum – WGS 84 Coordinate Standard Degrees Decimal Minutes N – Lat DD° MM.MMM' W – Long DD° MM.MMM'		Travel Time Air Ground		Phone	Helipad Yes No	Level of Care Facility		
Kalispell Regional Medical Center 32 Sunnyview Lane Kalispell, MT 59901	Lat:	N 48° 12.798'		25 Min	2 hrs.	406-752-5111 Fax: 406-756-4717	<input checked="" type="checkbox"/>	<input type="checkbox"/>	Level 3
	Long:	W 114° 19.440'							
	VHF:	155.3400 Tan Channel							
Cabinet Peaks Medical Center 209 Health Park Drive, Libby MT 59923	Lat:	N 48° 23.520'		N/A	1 hr.	406-283-7000 Fax: 406-293-7931	<input checked="" type="checkbox"/>	<input type="checkbox"/>	Critical Access
	Long:	W 115° 32.720'							
	VHF:	155.3400 Tan Channel							
Harbor View Medical Center 325 9 <sup>th</sup> Ave. Seattle WA. 98104	Lat:	N 47° 36.180'		2.5 hrs.	8 hrs.	206-744-3000 Fax: 206-744-2655	<input checked="" type="checkbox"/>	<input type="checkbox"/>	Level 1
	Long:	W 122° 19.493'							
	VHF:	155.3400 Tan Channel							
Kootenai Medical Center 2003 Kootenai Health Way Coeur d'Alene, ID 83814	LAT:	N 47° 41.723'		35 min		208-625-4000 Fax: 208-625-5700	<input checked="" type="checkbox"/>	<input type="checkbox"/>	Level 2
	Long:	W 116° 47.666'							
	VHF:	155.3400 Tan Channel							
6. Division B		Area, Location, Capability							
DIVISION B	EMS Responders & Capability:		Heather Swain EMT-F, Jim Bartlett EMT-F						
	Equipment Available on Scene:		BLS Kits, Backboard, SKED, AED, O <sup>2</sup>						
	Medical Emergency Channel:		Command 7 or 8 (location dependent)						
	ETA for Ambulance to Scene:		Estimate 60 minutes						
	Air:		Estimate 30 minutes, once in air						
	Ground:		Estimate 60 mins.						
Approved Helispots:		H 1							

7. Division G	Area, Location, Capability	
DIVISION G	EMS Responders & Capability:	Richard Goldman EMT-F, Blaine Larsen EMPF
	Equipment Available on Scene:	BLS Kit, O2, backboard
	Medical Emergency Channel:	Command 7 or 8 (location dependent)
	ETA for Ambulance to Scene:	Estimate 30 minutes.
	Air:	Estimate 30 minutes, once in air.
	Ground:	Estimate 60 minutes.
	Approved Helispot:	H 2
	Lat:	N 48° 13.35'
Long:	W 115° 3.67'	

8. Division P	Area, Location, Capability	
DIVISION P	EMS Responders & Capability:	No assigned EMT resource.
	Equipment Available on Scene:	
	Medical Emergency Channel:	Command 7 or 8 (location dependent)
	ETA for Ambulance to Scene:	Estimate 60 minutes.
	Air:	Estimate 30 minutes, once in air.
	Ground:	60 mins. Approx.
	Approved Helispot:	DNRC NW Lands Office Helispot off State lands Road
	Lat:	N 48° 21.44'
Long:	W 115° 19.06'	

9. ICP - CAMP	Incident Command Post (Camp at J. Neil Park, Libby MT)		
ICP	Point of Contact:	Linda Barbee	
	EMS Responders & Capability:	Linda Barbee AEMT, Paul Smith EMT-F	
	Equipment Available on Scene:	BLS Kit, O2	
	Medical Emergency Channel:	Command 7	
	ETA for Ambulance to Scene:	Estimate 15 minutes. Libby Ambulance in town. 24 hrs.	
	Air:	Estimate 30 minutes, once in air.	
	Ground:	Estimate 15 minutes.	
	Approved Helispot:	Libby Airport or Heliport at Cabinet Peaks Medical Ctr.	
10. Prepared By (Medical Unit Leader)	11. Date/Time	12. Reviewed By (Safety Officer)	13. Date/Time
Linda Barbee MEDL, Paul Smith MEDL (T) 	08/22/17 1900 hrs.	Kevin Boness, Adam Carr (T) 	08/22/17 1900 hrs.

## Tamarack/Peoples Creek Fires

### Incident within an Incident Emergency Action Plan

In the case of a serious accident requiring patient transport to a medical facility:

- The closest ranking Operations Leader (i.e. Division Supervisor) at the accident scene will take charge and be the Point of Contact (POC).
- Emergency Medical personnel assigned to the Division will respond there.
- Use the 9 line tear out sheet in the IAP or pg. 108 in IRPG to assess patient. If patient evaluation is either Red or Yellow, use Command Channel to call Tamarack Creek Communications to report the incident and request transport.
- Communications will clear command channel as needed for the emergency and make the 911 call to arrange patient transport as required.
- Maintain contact with Tamarack Communications on Command frequency for monitoring and support.
- Upon notification of a serious accident, the Incident Commander, Safety Officer, Operations Section Chief (Plans), Air Support Group Supervisor and Medical Unit Leader will report to the ICP Communications to monitor IWI.
- All other Command and General Staff will go to ICP communications to monitor the situation and be available if needed to assist.
- Incident Radio traffic will be monitored and documented at the ICP.
- Patients evaluated as Green notify Tamarack communications and assigned EMT/SOF will determine treatment and mode of transport to medical care.

Approved by:           /S/ Diane Hutton           Incident Commander

Date:           08/23/2017

## **Yesterday was a Great Safe Operation Stay Engaged and Promote a Cultural of Safety**

Safety is the responsibility of everyone. Most presenters at the morning briefing include information about safety along with their daily objectives. Thus, the Incident Action Plan (IAP) becomes a bundle of many safety messages that when taken together, is a very powerful tool.

Incident managers are responsible for sharing information in the IAP with every firefighter. Use these safety messages as a tool to promote dialog about your actions and potential consequences throughout your assignment.

Three techniques for promoting a culture of safety:

- **Include Everyone** – Every member of your team must be included in safety discussions. Even the newest crew member has something to contribute.
- **Use Information** – A lot of people are visual learners. Include real work examples and visual aides to prompt discussion. Story telling is a powerful means to illustrate your key points about safety.
- **Keep it Relevant** – Understand the challenges associated with your daily work assignments. Make your safety message applicable to the work at hand.

Promoting a culture of safety means that with every action taken you recognized there is a safety component to be considered and discussed. Your challenge is to continually bring safety to the forefront of your mind and to your actions.

**Be Mindful About Safety in all Your Actions**



## Tamarack / Peoples Creek DEMOB

August 23:

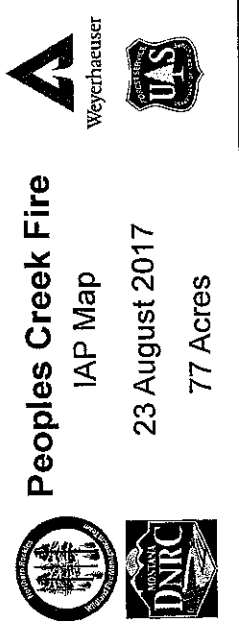
0730	C-8	HC2IA Custer-Gallatin Regulars
0800	E-70	WTT2 Montrose
0800	E-92	WTS2 Larry Lyons
0830	E-71	WTT2 West End
0830	E-76	ENG6 Brandon Bakken
0900	E-75	ENG6 Flame Chaser
0900	E-74	ENG6 Flame Chaser
0930	E-47	ENG6 Hotspot Fire
1000	E-51	ENG4 Metal Works
1000	E-93	WTS2 Mark Lauer Trucking
1030	E-83	WTS2 Wildfire Services
1030	E-82	WTT3 Moving Milk
1500	C-15	HC2 Rocky Mountain Fire Co
1600	A-1.7	TFLD(T) Matt Mahe
1600	O-70	TFLD(T) Garret Allen
1800	O-5.43	SOF2 Adam Carr
2000	O-5.32	GISS Diane Burbank
2000	O-5.24	PIO2 Bob MacGregor

*Thanks*

## Division Supply Order TAMARACK / PEOPLES CREEK 08/23/2017

<b>Order Number:</b>		<b>Date -</b>		<b>Division -</b>		
Order taken in Communications by:				RADO or COML confirmation:		
<b>DIVS Supervisor:</b>				<b>Date &amp; Time Needed:</b>		
<b>Delivery Contact:</b>				<b>Delivery Location:</b>		
Cell Phone #:				UTM		
Radio Channel Number:				Lat: Long:		
<b>Mode of Delivery (Circle Means):</b>		Ground Support:		DP/LZ:		
Division will pick up		Deliver to Helibase		Other:		
SPUL Confirmation can be filled as needed (Circle): Yes or No - Requiring at least 24 hours to fill.						
Item	Description:	Quantity	Comments			
	<b>Hose Lay Kit, 1000 Feet = (10) 1 1/2" Hose, and 5 Each of: 1" Hose, 1 1/2" Wyes, 1 1/2" to 1" Reducers, and 1" Forester Nozzles</b>					
1		1000 Feet	4	4000 Feet		
2		2000 Feet	5	5000 Feet		
3		3000 Feet	6	6000 Feet		
	<b>Garden Hose Kit, 500 Feet = (10) 3/4" Hose, and (5 Each): 3/4" Wye, 3/4" Shutoff, 3/4" Nozzle, 1" Wye, and 1" to 3/4" Reducers)</b>					
7		500 Feet	10	3000 Feet		
8		1000 Feet	11	4000 Feet		
9		2000 Feet	12	5000 Feet		
<b>Water Handling Equipment:</b>			Item #	Description	Quantity	
13	Hose: 1 1/2" (100')	LG		Line Tools:		
14	1" (100')	LG	40	Pulaski	EA	
15	3/4" (50' Toy/Garden)	LG	41	Combi	EA	
16	Gated Wye: 1 1/2"	EA	42	McCloud	EA	
17	1"	EA	43	Shovel	EA	
18	3/4"	EA	44	Water: Cubies	EA	
19	Reducer: 1 1/2" X 1"	EA	45	Bottled	CS	
20	1" X 3/4"	EA	46	Gatorade	CS	
21	Nozzle: 1" Forester	EA	47	MRE's	BX	
22	1" Mystery (KK)	EA	48	Flagging: Lime Green	RO	
23	1 1/2" Red Barrel	EA	49	Pink	RO	
24	3/4" Brass	EA	50	Orange	RO	
25	Shutoff Values: 3/4"	EA	51	Killer Tree	RO	
26	Pumpkin or Porta-Tank, 1800 gal.	EA	52	Wrap, Structural	RO	
27	Blivets, Slingable 55 Gal	EA	53	Other:		
28	Mopup Kits 3 Person	EA	54			
29	Backpack Pumps	EA	55			
30	Sprinkler Kits	EA	56			
31	Foam (5 GALS)	PL	57			
32	Mark III Kits	KT	58			
33	Drip Torch	EA	59			
34	Fusees (72/Case)	CS	60			
35	Chainsaw Kit	KT	61	Bar Oil	Gal	
36	Fuel, 5 gallons:	Gas	Can	Diesel, 5 gallon	Can	
37	Mark III (20:1)		Can	Not Mixed	QT	
38	Chainsaw (50:1)	Mixed	Can		2.6 oz/ Gal	BT
			Can		12.8 oz/ 5 Gal	BT
39	Drip Torch (3:2)		Can			


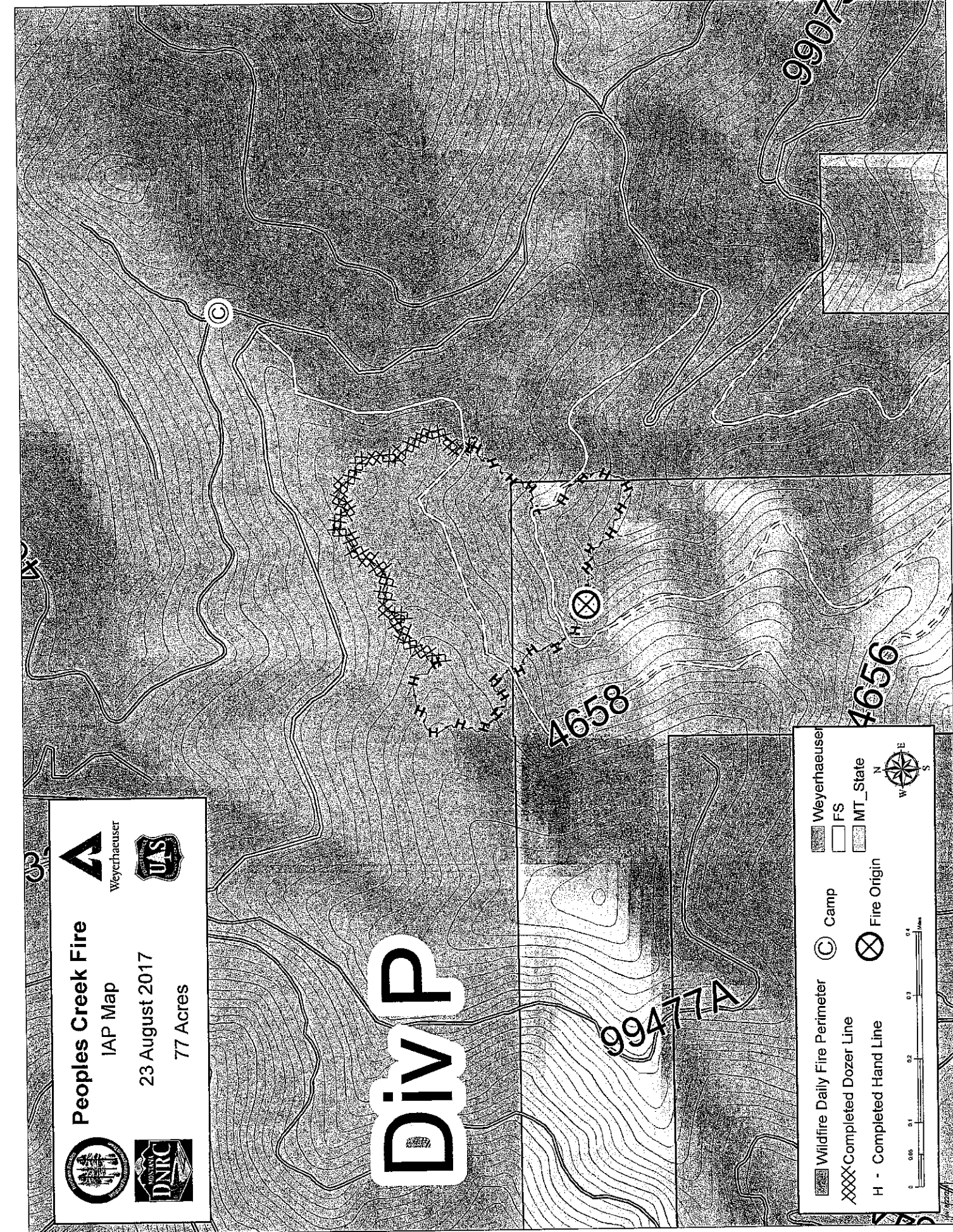
**Peoples Creek Fire**  
 IAP Map  
 23 August 2017  
 77 Acres



# Div P

	Wildfire Daily Fire Perimeter		Camp		Weyerhaeuser
	Completed Dozer Line				FS
	Completed Hand Line				MT_State
			Fire Origin		

0 0.05 0.1 0.2 0.4 Miles

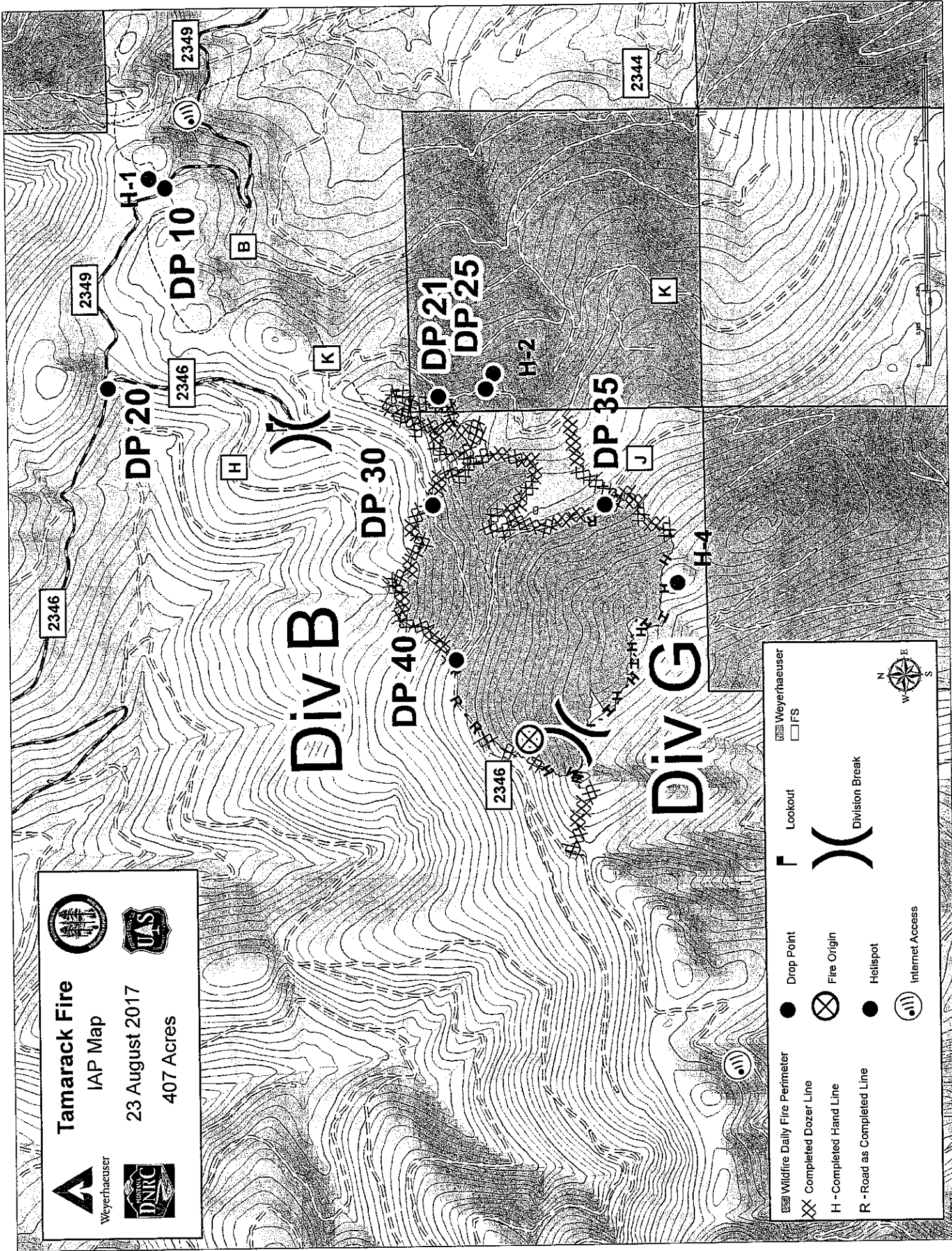


Tamarack Fire

IAP Map

23 August 2017

407 Acres



	Wildfire Daily Fire Perimeter		Weyerhaeuser
	Completed Dozer Line		Lookout
	H - Completed Hand Line		Division Break
	R - Road as Completed Line		
	Drop Point		Fire Origin
	Fire Origin		Helispot
	Helispot		Internet Access
	Internet Access		





## Medical Incident Report

**FOR ALL MEDICAL EMERGENCIES: IDENTIFY ON SCENE INCIDENT COMMANDER BY NAME AND POSITION AND ANNOUNCE "MEDICAL EMERGENCY" TO INITIATE RESPONSE FROM IMT COMMUNICATIONS/DISPATCH.**

**Use items one through nine to communicate situation to communications/dispatch.**

### 1. CONTACT COMMUNICATIONS/DISPATCH

*Ex: "Communications, Div. Alpha. Stand-by for Priority Medical Incident Report." (If life threatening request designated frequency be cleared for emergency traffic.)*

### 2. INCIDENT STATUS: Provide incident summary and command structure.

<b>Nature of Injury/Illness</b>		<i>Describe the injury (Ex: Broken leg with bleeding)</i>
Incident Name		<i>Geographic Name + "Medical" (Ex: Trout Meadow Medical)</i>
Incident Commander		<i>Name of IC</i>
Patient Care		<i>Name of Care Provider (Ex: EMT Smith)</i>

### 3. INITIAL PATIENT ASSESSMENT: Complete this section for each patient. This is only a brief, initial assessment. Provide additional patient info after completing this 9 Line Report.

Number of Patients:	Male / Female	Age:	Weight:
Conscious? <input type="checkbox"/> YES <input type="checkbox"/> <b>NO = MEDEVAC!</b>			
Breathing? <input type="checkbox"/> YES <input type="checkbox"/> <b>NO = MEDEVAC!</b>			
Mechanism of Injury: <i>What caused the injury?</i>			
Lat/Long (Datum WGS84) <i>Ex: N 40° 42.45' x W 123° 03.24'</i>			

### 4. SEVERITY OF EMERGENCY, TRANSPORT PRIORITY

<b>SEVERITY</b>	<b>TRANSPORT PRIORITY</b>
<input type="checkbox"/> <b>URGENT-RED Life threatening injury or illness.</b> <i>Ex: Unconscious, difficulty breathing, bleeding severely, 2° - 3° burns more than 4 palm sizes, heat stroke, disoriented.</i>	Ambulance or MEDEVAC helicopter. Evacuation need is <b>IMMEDIATE.</b>
<input type="checkbox"/> <b>PRIORITY-YELLOW Serious Injury or Illness.</b> <i>Ex: Significant trauma, not able to walk, 2° - 3° burns not more than 1-2 palm sizes.</i>	Ambulance or consider air transport if at remote location. Evacuation may be <b>DELAYED.</b>
<input type="checkbox"/> <b>ROUTINE-GREEN</b> Not a life threatening injury or illness. <i>Ex: Sprains, strains, minor heat-related illness.</i>	Non-Emergency. Evacuation considered <b>Routine of Convenience.</b>

### 5. TRANSPORT PLAN:

**Air Transport:** (Agency Aircraft Preferred)

<input type="checkbox"/> Helispot	<input type="checkbox"/> Short-haul/Hoist	<input type="checkbox"/> Life Flight	<input type="checkbox"/> Other
-----------------------------------	---	--------------------------------------	--------------------------------

**Ground Transport:**

<input type="checkbox"/> Self-Extract	<input type="checkbox"/> Carry-Out	<input type="checkbox"/> Ambulance	<input type="checkbox"/> Other
---------------------------------------	------------------------------------	------------------------------------	--------------------------------

### 6. ADDITIONAL RESOURCE/EQUIPMENT NEEDS:

<input type="checkbox"/> Paramedic/EMT(s)	<input type="checkbox"/> Crew(s)	<input type="checkbox"/> SKED/Backboard/C-Collar
<input type="checkbox"/> Burn Sheet(s)	<input type="checkbox"/> Oxygen	<input type="checkbox"/> Trauma Bag
<input type="checkbox"/> Medication(s)	<input type="checkbox"/> IV/Fluid(s)	<input type="checkbox"/> Cardiac Monitor/AED
<input type="checkbox"/> Other (i.e. splints, rope rescue, wheeled litter)		

### 7. COMMUNICATIONS:

Function	Channel Name/Number	Receive (Rx)	Tone/NAC *	Transmit (Tx)	Tone/NAC *
<i>Ex: Command</i>	<i>Forest Rpt, Ch. 2</i>	<i>168.3250</i>	<i>110.9</i>	<i>171.4325</i>	<i>110.9</i>
COMMAND					
AIR-TO-GRND					
TACTICAL					

\*(NAC for digital radio system)

### 8. EVACUATION LOCATION:

Lat/Long (Datum WGS84) <i>EX: N 40 42.45' x W 123 03.24'</i>	
Patient's ETA to Evacuation Location:	
Helispot/Extraction Size and Hazards:	

### 9. CONTINGENCY:

<b>Considerations:</b> <i>If primary options fail, what actions can be implemented in conjunction with primary evacuation method? Be thinking ahead...</i>	<b>REMEMBER:</b> Confirm ETA's of resources ordered Act according to your level of training Be Alert. Keep Calm. Think Clearly. Act Decisively.
--	---