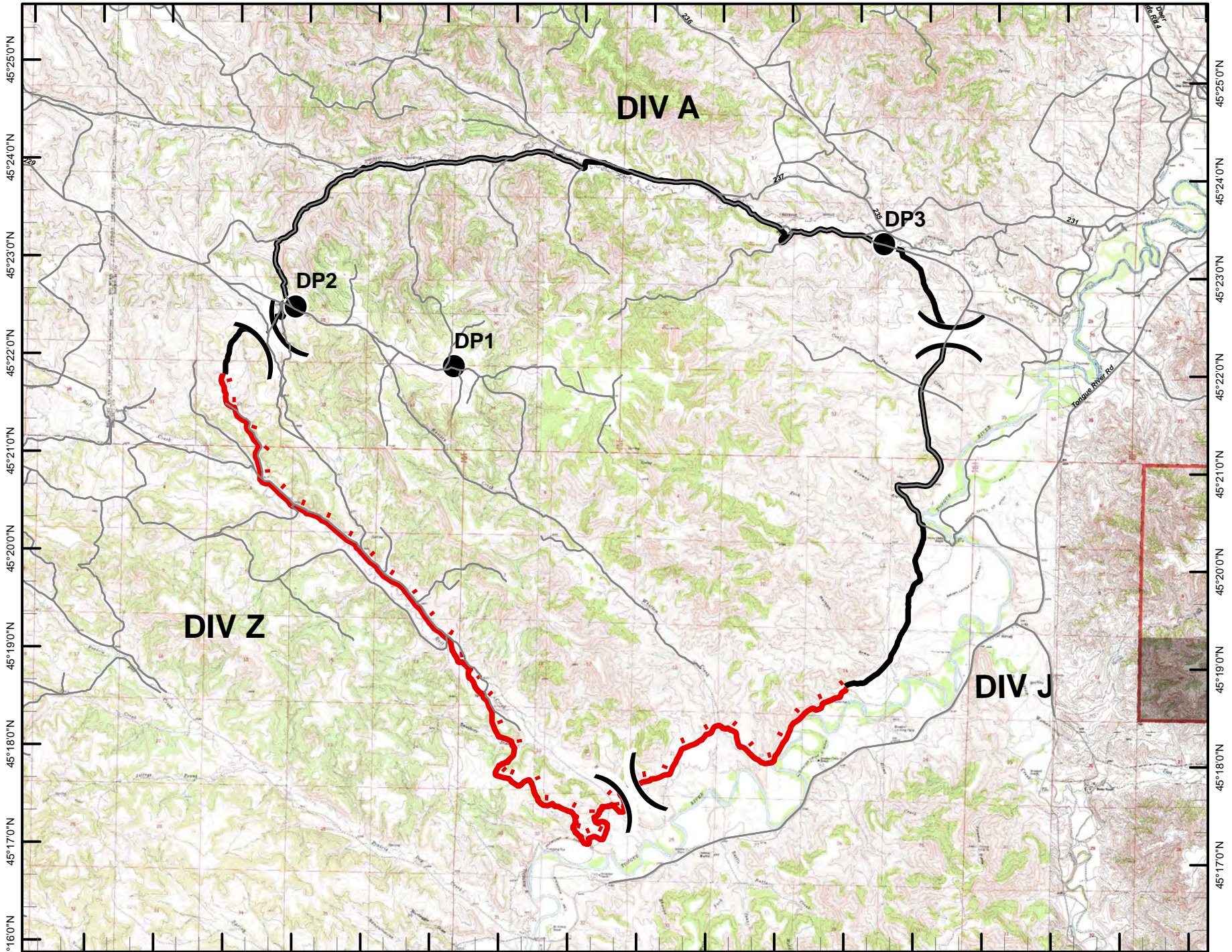


106°45'0"W 106°44'0"W 106°43'0"W 106°42'0"W 106°41'0"W 106°40'0"W 106°39'0"W 106°38'0"W 106°37'0"W 106°36'0"W 106°35'0"W 106°34'0"W 106°33'0"W 106°32'0"W 106°31'0"W 106°30'0"W 106°29'0"W 106°28'0"W



106°44'0"W 106°43'0"W 106°42'0"W 106°41'0"W 106°40'0"W 106°39'0"W 106°38'0"W 106°37'0"W 106°36'0"W 106°35'0"W 106°34'0"W 106°33'0"W 106°32'0"W 106°31'0"W 106°30'0"W 106°29'0"W 106°28'0"W

IAP MAP

TONGUE RIVER COMPLEX

WITTEN FIRE

MT-MCD-000163

JULY 13, 2017

28,957 ACRES

- DROP POINT
-) DIVISION BREAK
- UNCONTROLLED FIRE EDGE
- COMPLETED LINE

ANDROID INSTRUCTIONS
open PDF Maps, click on + at bottom right to add map, then click the orange download button, click on mini QR code icon at top right of screen to access camera, scan code, click on desired daily folder to access maps, click on desired map to download



IPHONE INSTRUCTIONS
open PDF Maps, click on + to add map, click on mini QR code icon at top right of screen to access camera, scan code, click on desired daily folder to access maps, click on desired map to download



NAD 1983

0 0.25 0.5 1
MILES

