

# Tongue River Complex

Air Operations

MT-MCD-000163

14 July 2017

Day Shift








Witten

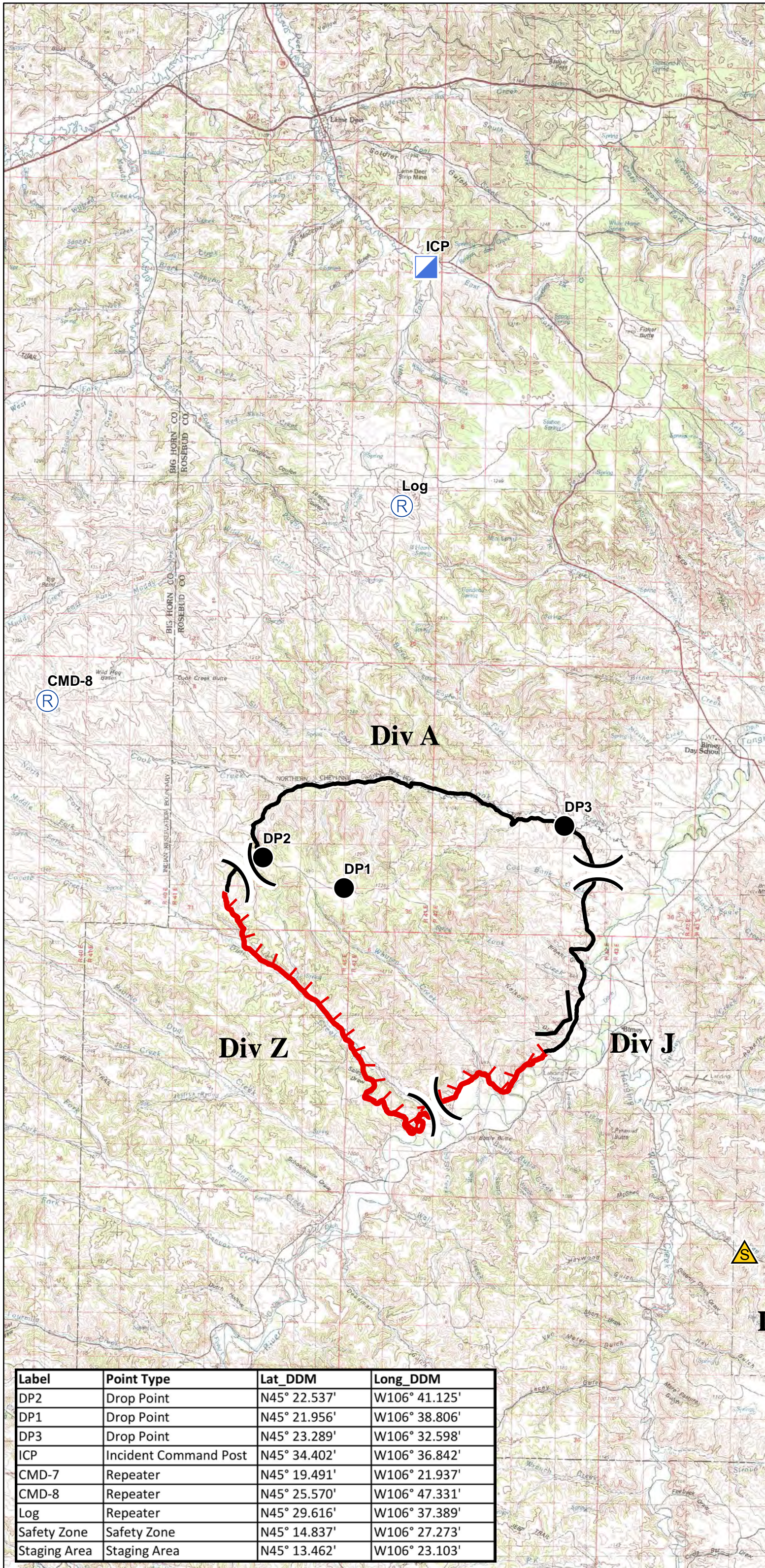
28,957 acres

Lee

4,008 acres

0 0.75 1.5 3 Mi

-  Uncontrolled Fire Edge
-  Completed Line
-  Drop Point
-  Incident Command Post
-  Repeater
-  Safety Zone
-  Staging Area



Label	Point Type	Lat_DDM	Long_DDM
DP2	Drop Point	N45° 22.537'	W106° 41.125'
DP1	Drop Point	N45° 21.956'	W106° 38.806'
DP3	Drop Point	N45° 23.289'	W106° 32.598'
ICP	Incident Command Post	N45° 34.402'	W106° 36.842'
CMD-7	Repeater	N45° 19.491'	W106° 21.937'
CMD-8	Repeater	N45° 25.570'	W106° 47.331'
Log	Repeater	N45° 29.616'	W106° 37.389'
Safety Zone	Safety Zone	N45° 14.837'	W106° 27.273'
Staging Area	Staging Area	N45° 13.462'	W106° 23.103'