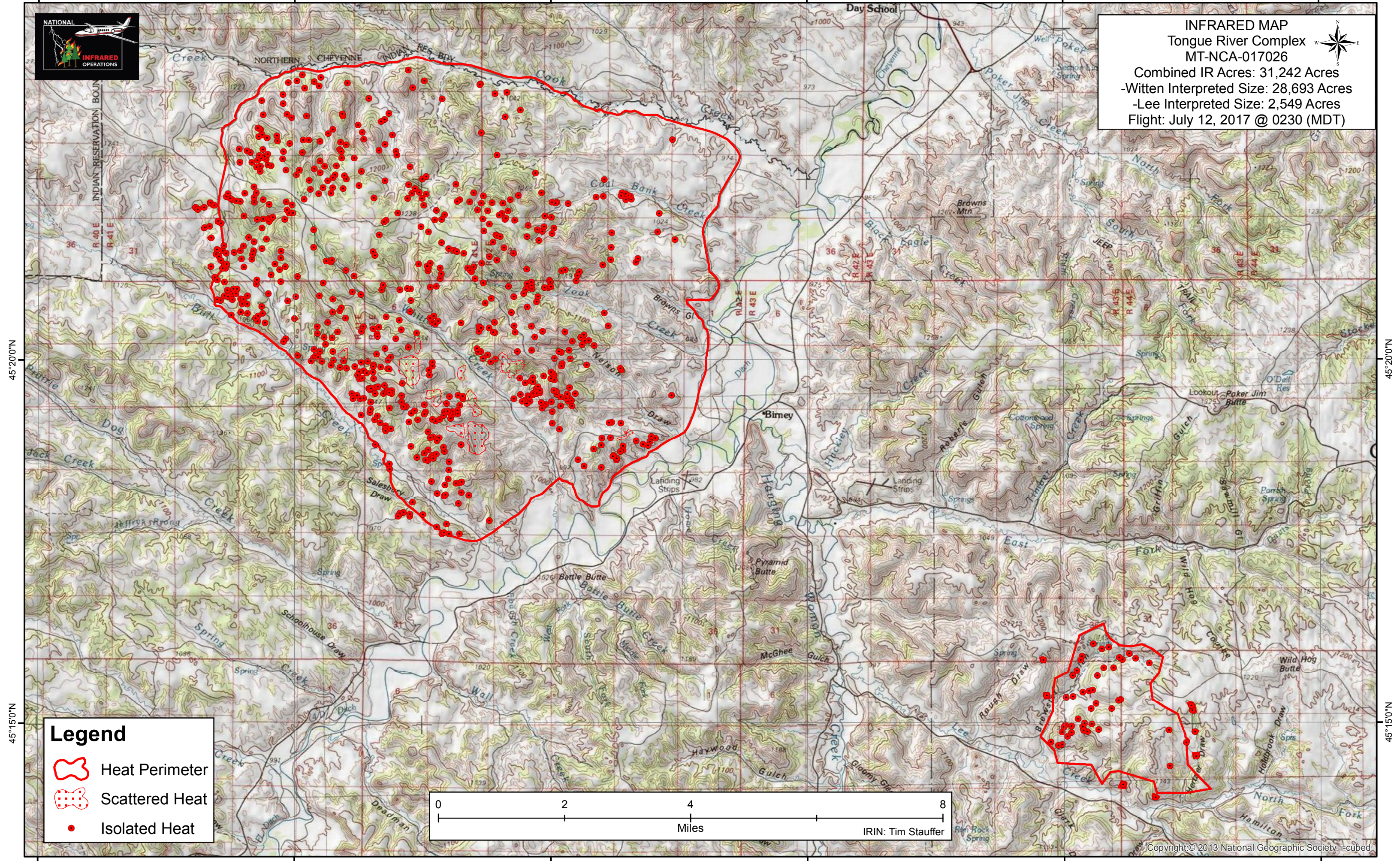


106°45'0"W 106°40'0"W 106°35'0"W 106°30'0"W 106°25'0"W 106°20'0"W



INFRARED MAP
 Tongue River Complex
 MT-NCA-017026
 Combined IR Acres: 31,242 Acres
 -Witten Interpreted Size: 28,693 Acres
 -Lee Interpreted Size: 2,549 Acres
 Flight: July 12, 2017 @ 0230 (MDT)



45°20'0"N

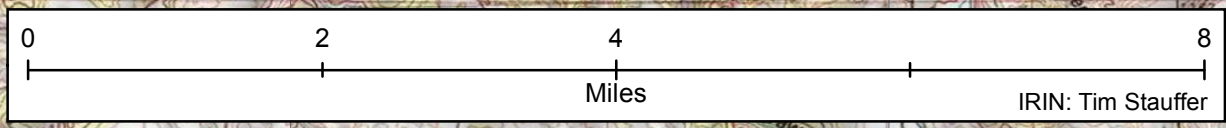
45°20'0"N

45°15'0"N

45°15'0"N

Legend

- Heat Perimeter
- Scattered Heat
- Isolated Heat



106°45'0"W 106°40'0"W 106°35'0"W 106°30'0"W 106°25'0"W 106°20'0"W