

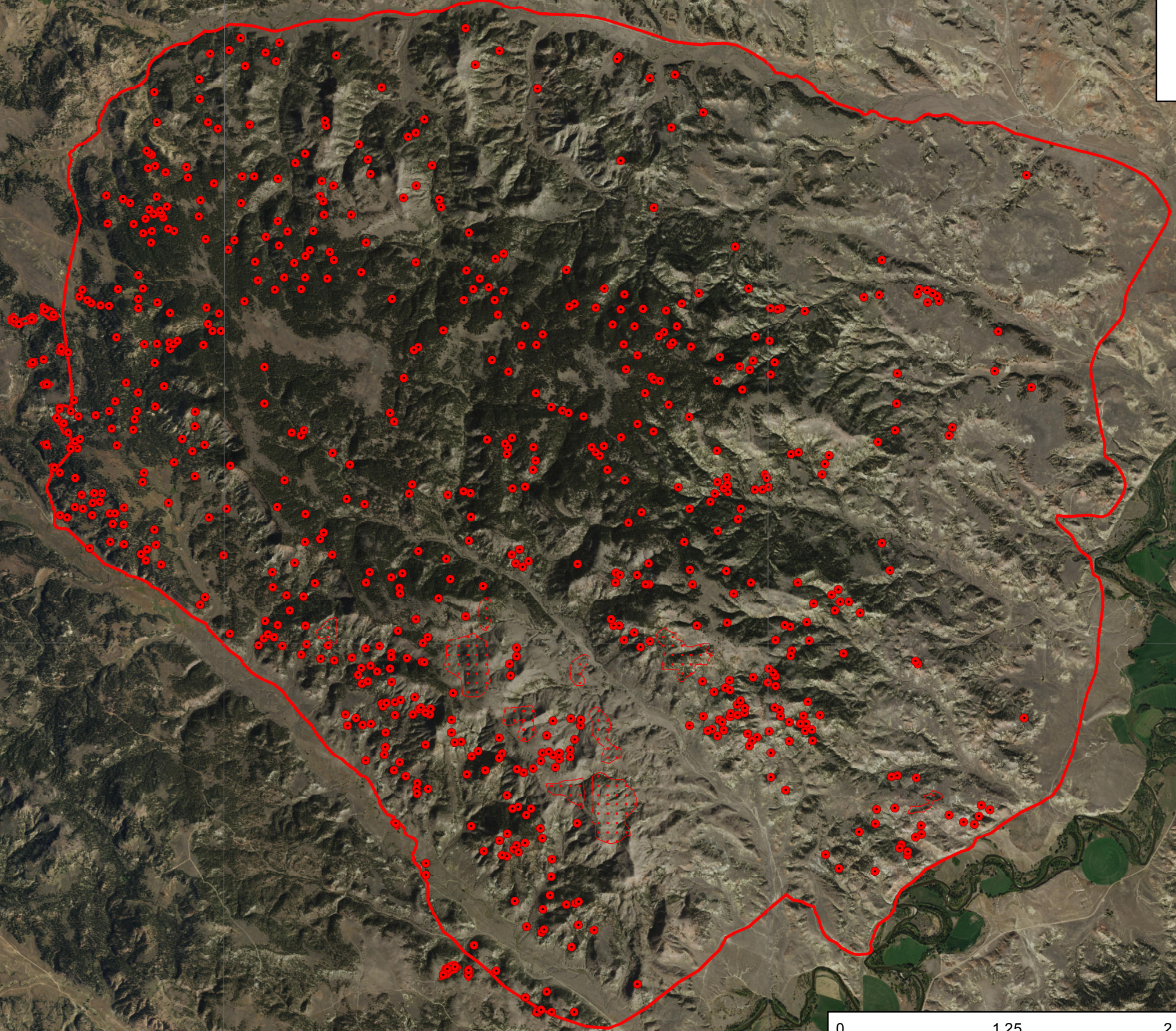
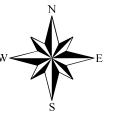
106°40'0"W

106°35'0"W

106°30'0"W






**INFRARED MAP**  
 Tongue River Complex  
 MT-NCA-017026  
 Combined IR Acres: 31,242 Acres  
 -Witten Interpreted Size: 28,693 Acres  
 -Lee Interpreted Size: 2,549 Acres  
 Flight: July 12, 2017 @ 0230 (MDT)

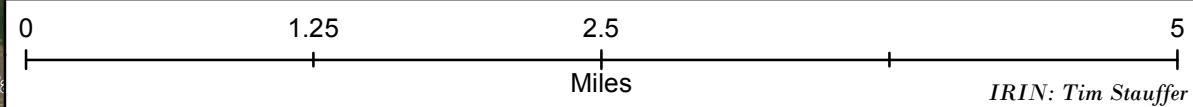


45°20'0"N

45°20'0"N

**Legend**

-  Heat Perimeter
-  Scattered Heat
-  Isolated Heat



Source: Esri, DigitalGlobe, GeoEye, Earthstar, CNES, Airbus, GeoEye, Community

IRIN: Tim Stauffer

106°40'0"W

106°35'0"W

106°30'0"W