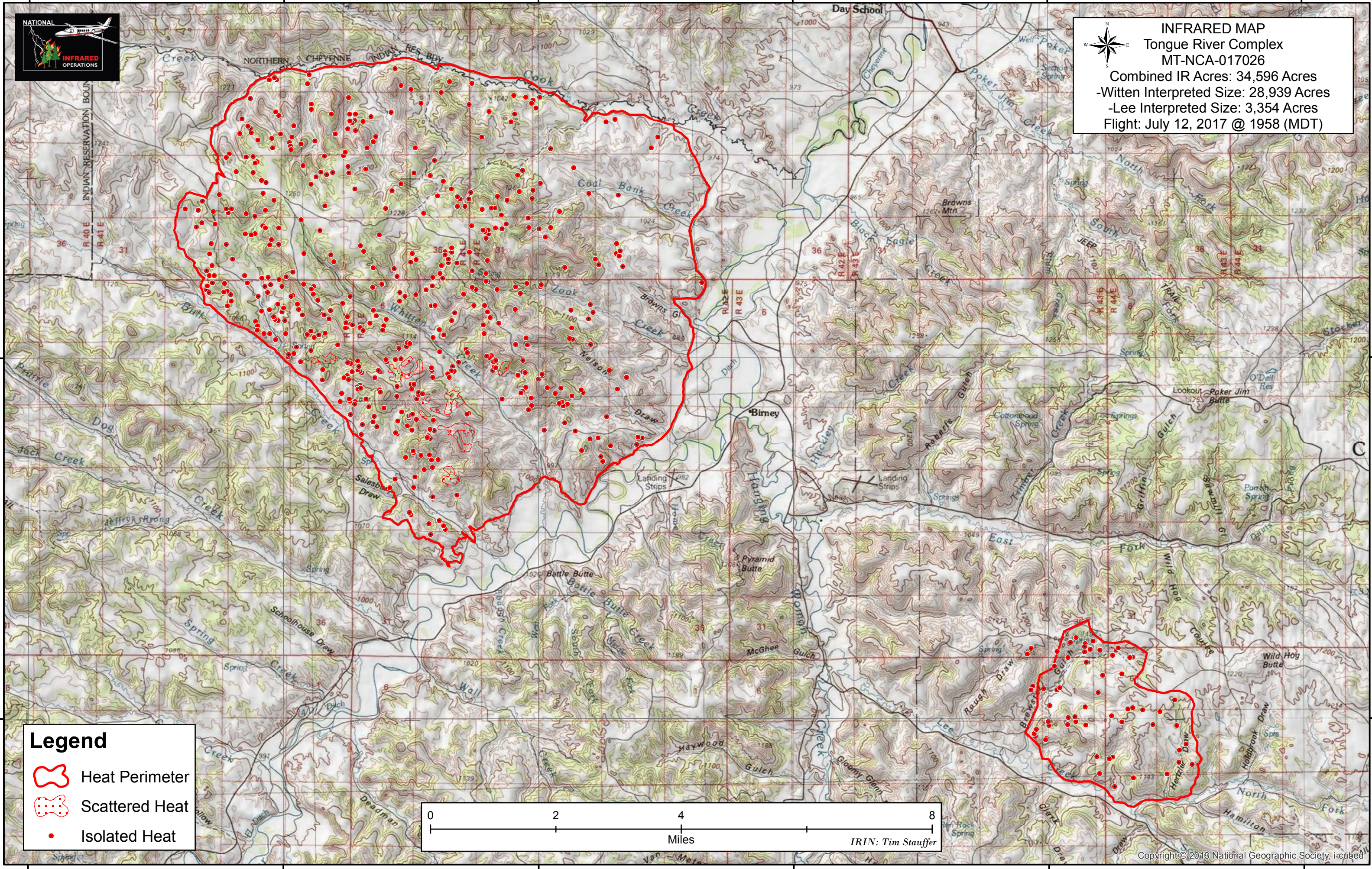


106°45'0"W 106°40'0"W 106°35'0"W 106°30'0"W 106°25'0"W 106°20'0"W



INFRARED MAP
Tongue River Complex
MT-NCA-017026
 Combined IR Acres: 34,596 Acres
 -Witten Interpreted Size: 28,939 Acres
 -Lee Interpreted Size: 3,354 Acres
 Flight: July 12, 2017 @ 1958 (MDT)






45°20'0"N

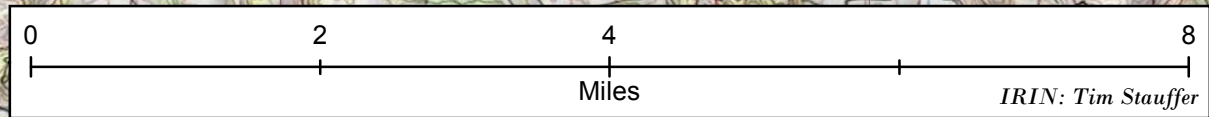
45°20'0"N

45°15'0"N

45°15'0"N

Legend

-  Heat Perimeter
-  Scattered Heat
-  Isolated Heat



106°45'0"W 106°40'0"W 106°35'0"W 106°30'0"W 106°25'0"W 106°20'0"W