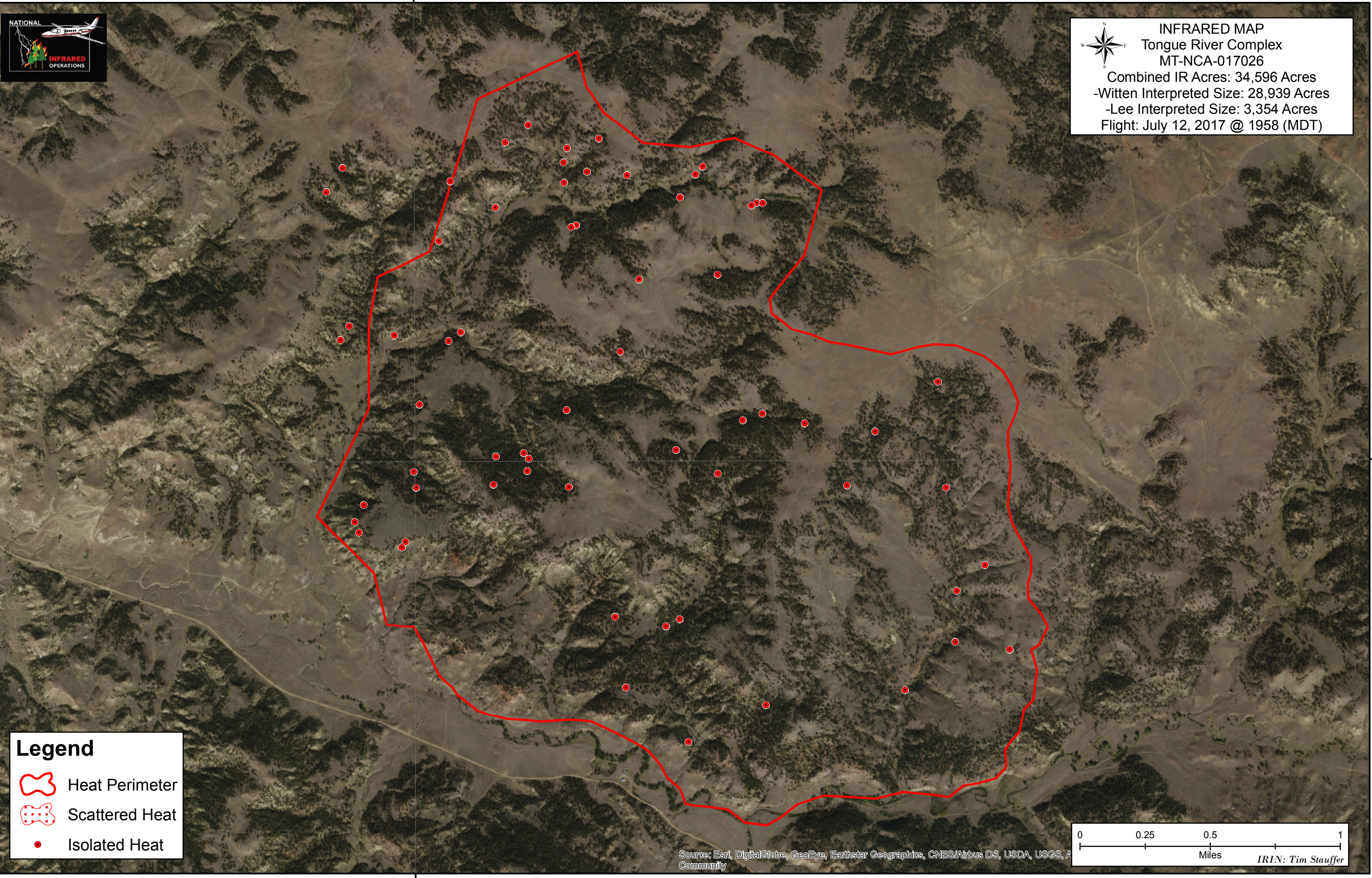


106°25'0"W



INFRARED MAP
Tongue River Complex
MT-NCA-017026




Combined IR Acres: 34,596 Acres
-Witten Interpreted Size: 28,939 Acres
-Lee Interpreted Size: 3,354 Acres
Flight: July 12, 2017 @ 1958 (MDT)

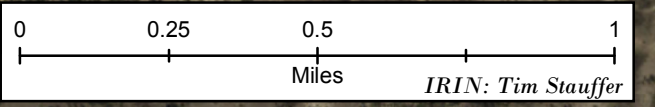


45°15'0"N

45°15'0"N

Legend

-  Heat Perimeter
-  Scattered Heat
-  Isolated Heat



Source: Esri, DigitalGlobe, GeoEye, Earthstar Geographics, CNES/Airbus DS, USDA, USGS, A
Community

IRIN: Tim Stauffer

106°25'0"W