

106°45'0"W

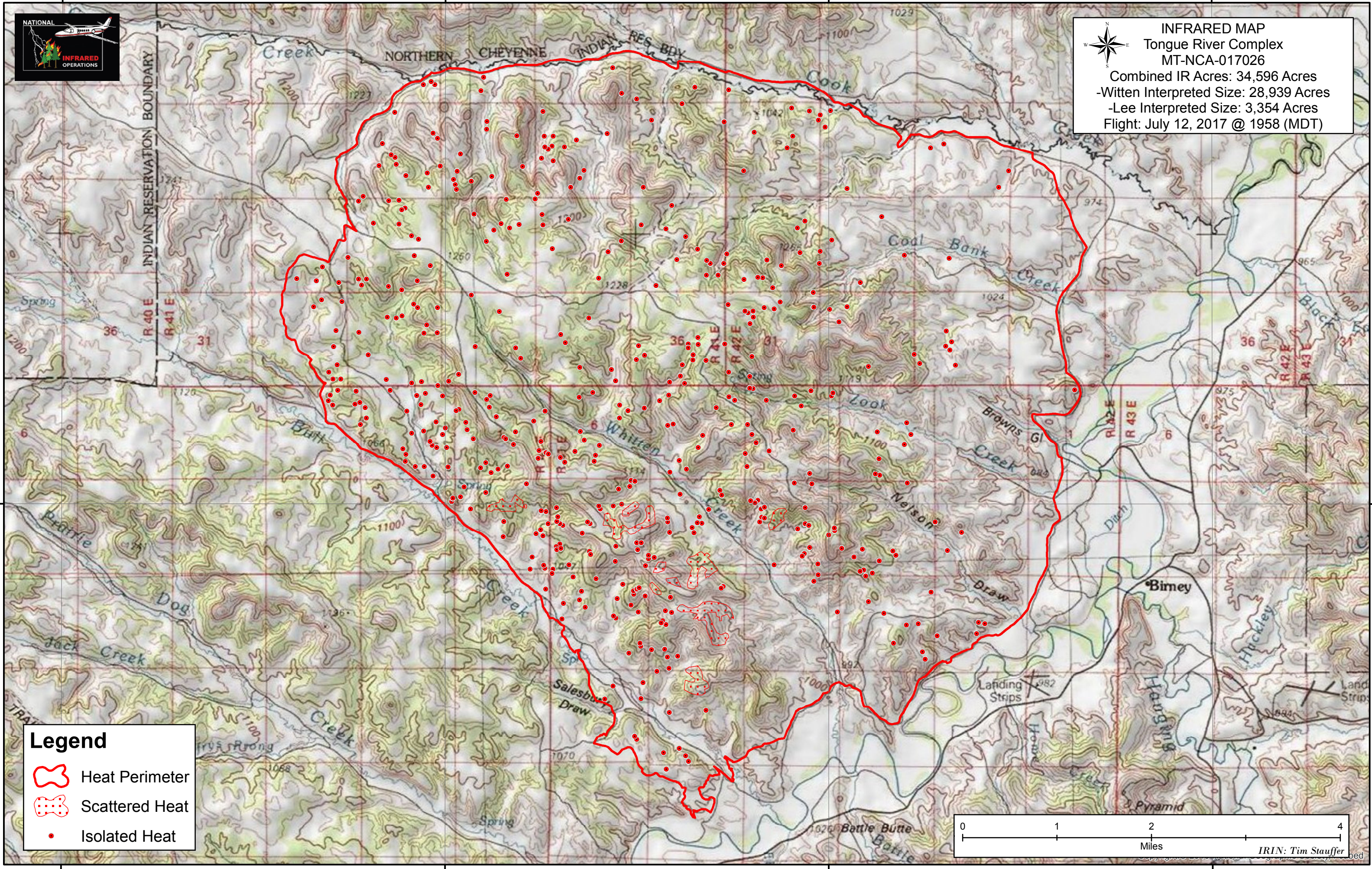
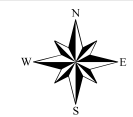
106°40'0"W

106°35'0"W

106°30'0"W



INFRARED MAP
Tongue River Complex
MT-NCA-017026
 Combined IR Acres: 34,596 Acres
 -Witten Interpreted Size: 28,939 Acres
 -Lee Interpreted Size: 3,354 Acres
 Flight: July 12, 2017 @ 1958 (MDT)



Legend

- Heat Perimeter
- Scattered Heat
- Isolated Heat

0 1 2 4
 Miles
 IRIN: Tim Stauffer

106°45'0"W

106°40'0"W

106°35'0"W

106°30'0"W

45°20'0"N

45°20'0"N