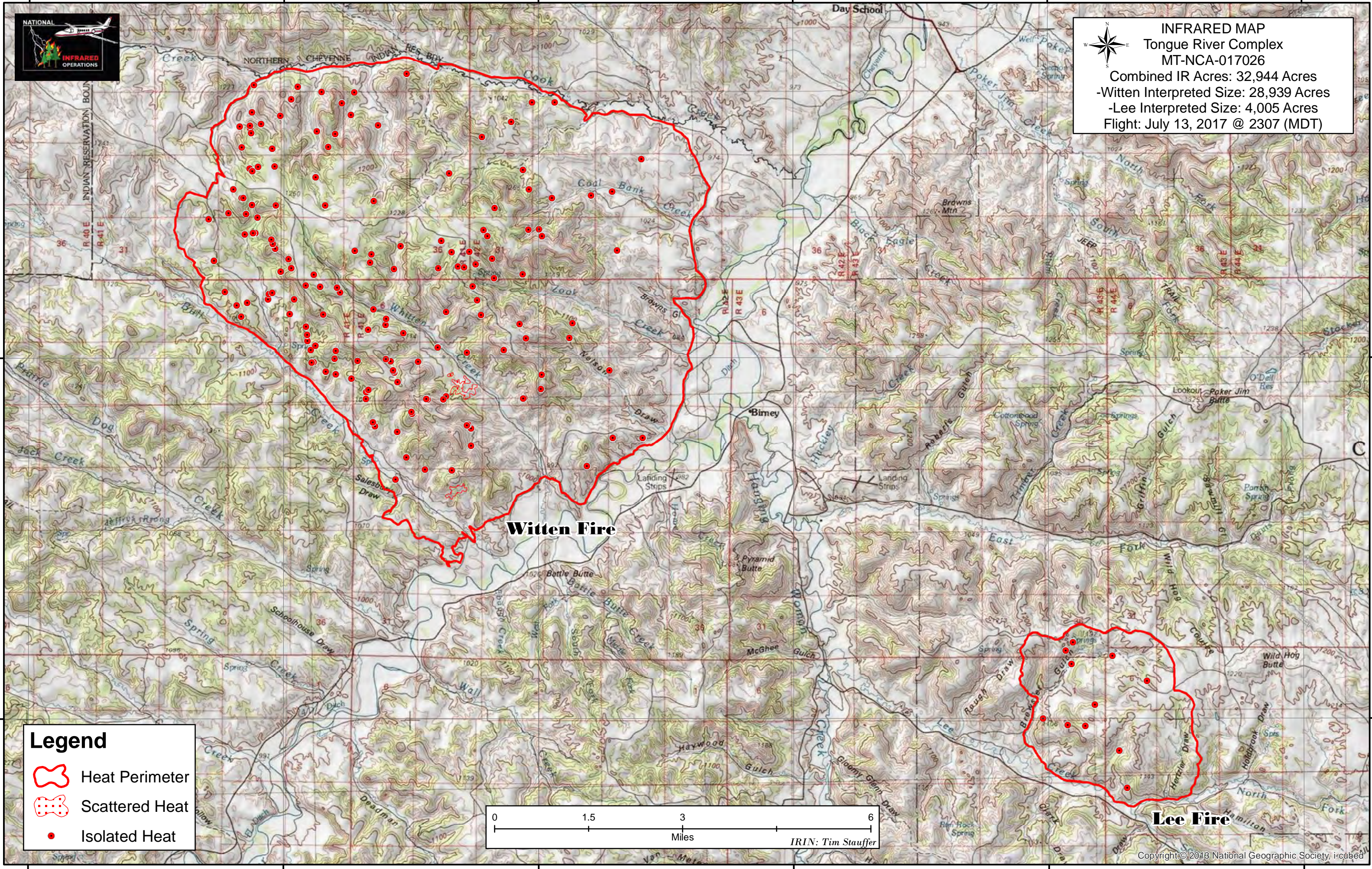


106°45'0"W 106°40'0"W 106°35'0"W 106°30'0"W 106°25'0"W 106°20'0"W






**INFRARED MAP**  
**Tongue River Complex**  
**MT-NCA-017026**  
 Combined IR Acres: 32,944 Acres  
 -Witten Interpreted Size: 28,939 Acres  
 -Lee Interpreted Size: 4,005 Acres  
 Flight: July 13, 2017 @ 2307 (MDT)

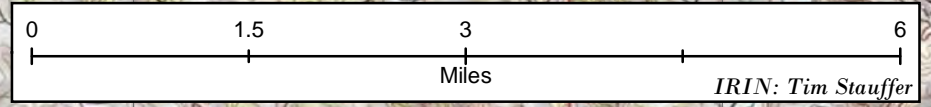


**Witten Fire**

**Lee Fire**

**Legend**

-  Heat Perimeter
-  Scattered Heat
-  Isolated Heat



106°45'0"W 106°40'0"W 106°35'0"W 106°30'0"W 106°25'0"W 106°20'0"W