

106°45'0"W

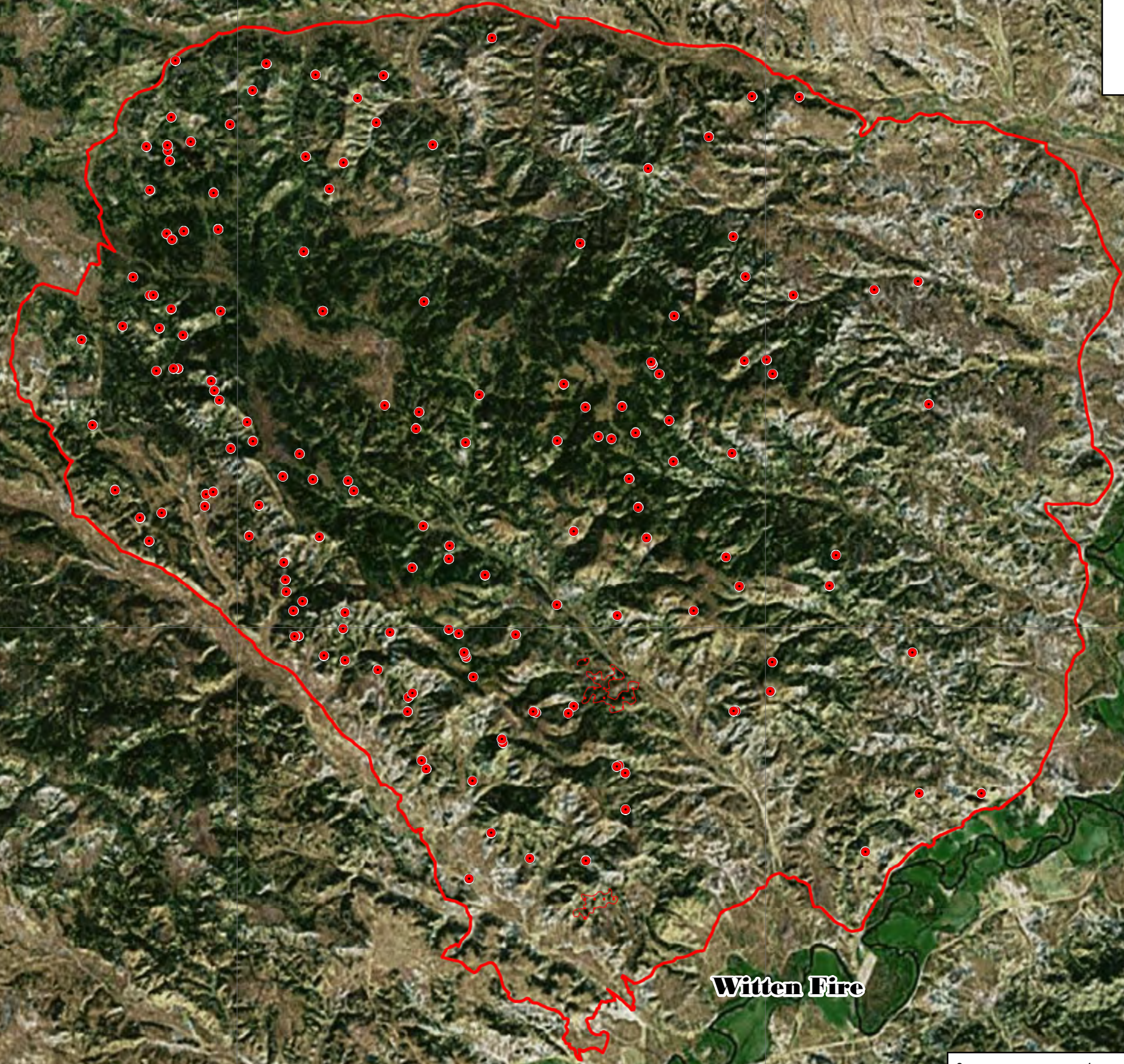
106°40'0"W

106°35'0"W

106°30'0"W






INFRARED MAP
 Tongue River Complex - Witten Fire
 MT-NCA-017026
 -Witten Interpreted Size: 28,939 Acres
 Flight: July 13, 2017 @ 2307 (MDT)



45°20'0"N

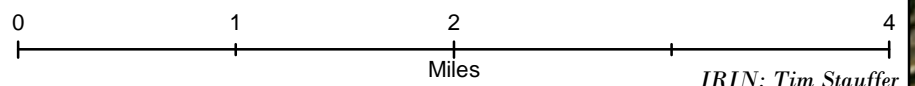
45°20'0"N

Legend

-  Heat Perimeter
-  Scattered Heat
-  Isolated Heat



Witten Fire



Source: Esri, DigitalGlobe, GeoEye, Earthstar Geographics, CNES/Community

IRIN: Tim Stauffer

106°45'0"W

106°40'0"W

106°35'0"W

106°30'0"W