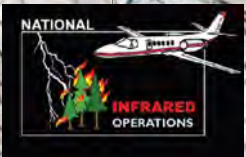


106°45'0"W

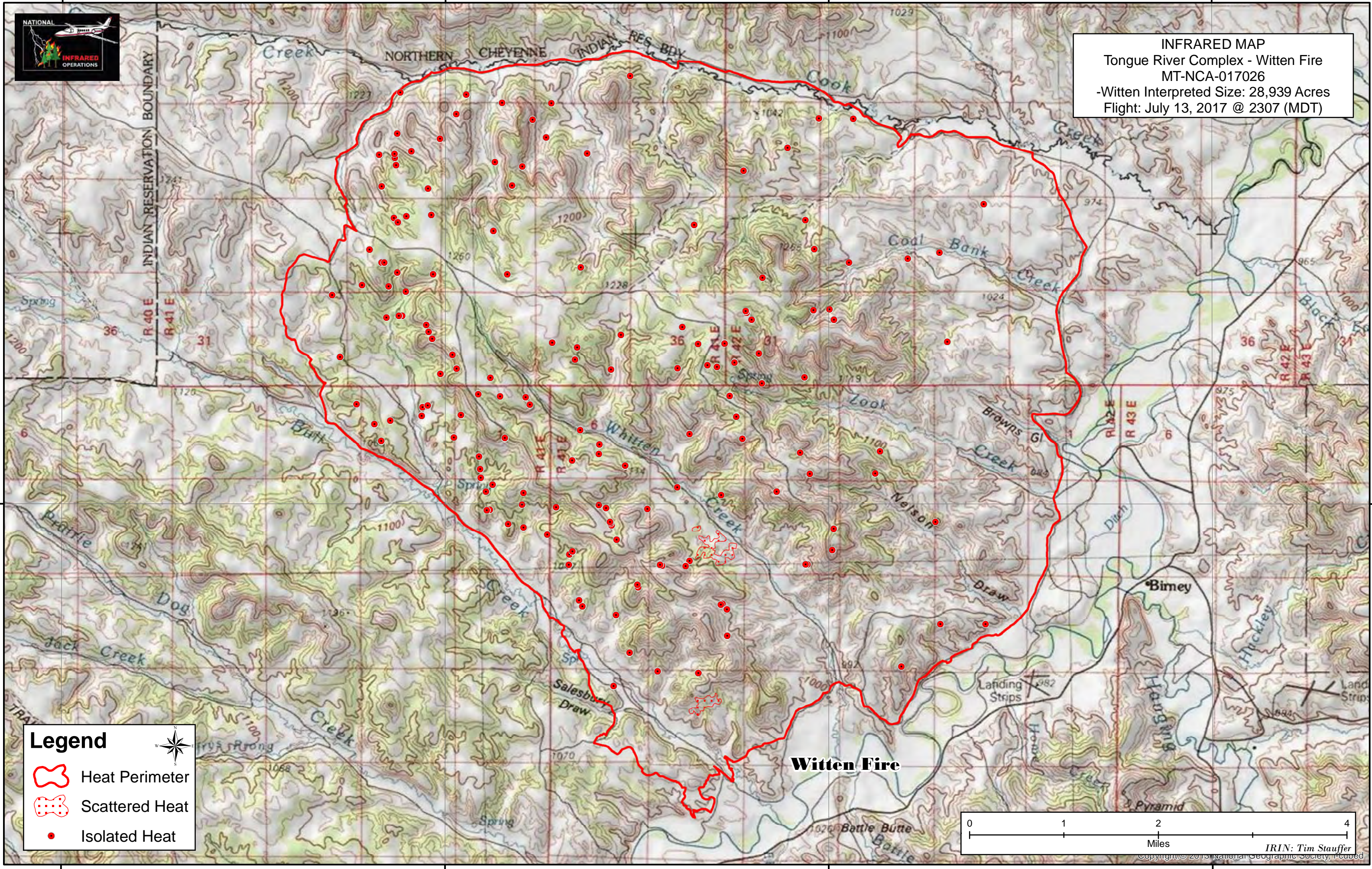
106°40'0"W

106°35'0"W

106°30'0"W

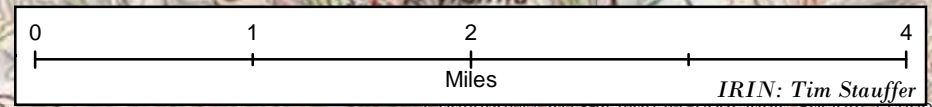


INFRARED MAP
 Tongue River Complex - Witten Fire
 MT-NCA-017026
 -Witten Interpreted Size: 28,939 Acres
 Flight: July 13, 2017 @ 2307 (MDT)



Legend

- Heat Perimeter
- Scattered Heat
- Isolated Heat



IRIN: Tim Stauffer
 Copyright © 2013 National Geographic Society, Inc.

106°45'0"W

106°40'0"W

106°35'0"W

106°30'0"W

45°20'0"N

45°20'0"N