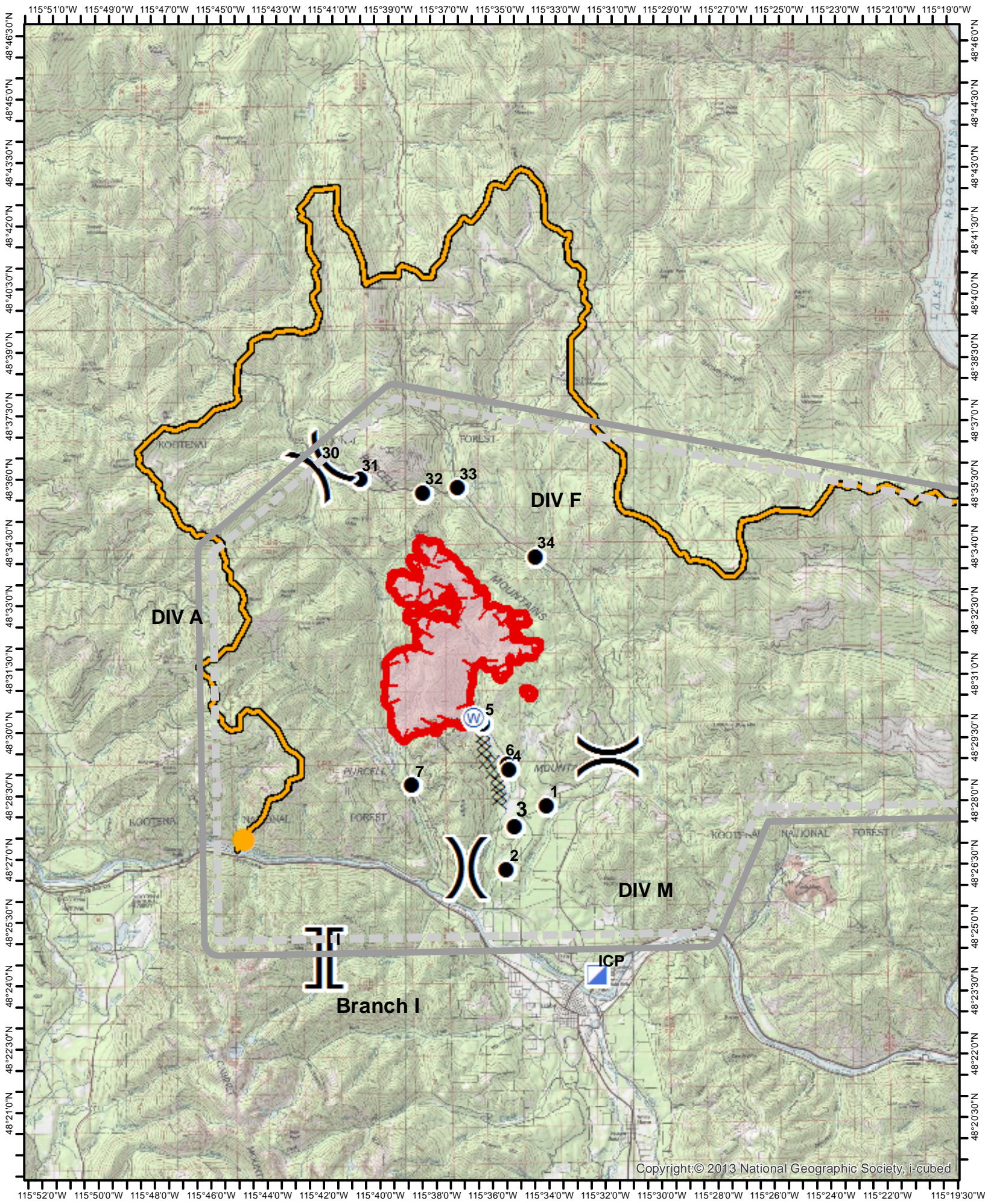


West Fork Fire Point Locations

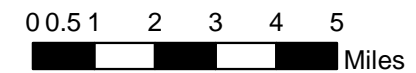
Feature Type	PointName	Longitude	Latitude
Drop Point	DP 30	48° 36.218'	-115° 41.710'
Drop Point	DP 31	48° 35.912'	-115° 40.292'
Drop Point	DP 32	48° 35.566'	-115° 38.037'
Drop Point	DP 33	48° 35.671'	-115° 36.809'
Drop Point	DP 34	48° 34.000'	-115° 34.071'
Drop Point	DP 5	48° 30.080'	-115° 36.082'
Drop Point	DP 6	48° 29.112'	-115° 35.218'
Drop Point	DP 4	48° 28.960'	-115° 35.148'
Drop Point	DP 7	48° 28.641'	-115° 38.611'
Drop Point	DP 3	48° 27.623'	-115° 35.017'
Drop Point	DP 1	48° 28.112'	-115° 33.833'
Drop Point	DP 2	48° 26.610'	-115° 35.307'
Incident Command Post	ICP	48° 24.052'	-115° 32.188'
Water Source	Water Source	48° 30.193'	-115° 36.389'
Branch Break	Branch II	47° 57.202'	-115° 16.620'
Division Break	A/F	48° 36.218'	-115° 41.710'
Division Break	F/M	48° 29.229'	-115° 31.651'
Division Break	A/M	48° 26.658'	-115° 36.771'
Branch Break	Branch I	48° 24.595'	-115° 41.859'



West Fork

MTKNF-000222

09/07/2017



- Drop Point
- Incident Command Post
- Water Source
- Division Break
- Branch Break
- Uncontrolled Fire Edge
- Completed Dozer Line
- IA Response Area
- Wildfire Daily Fire Perimeter

