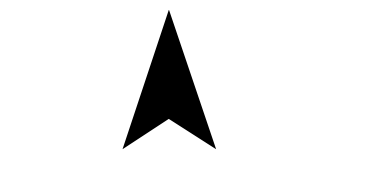


Moose Peak

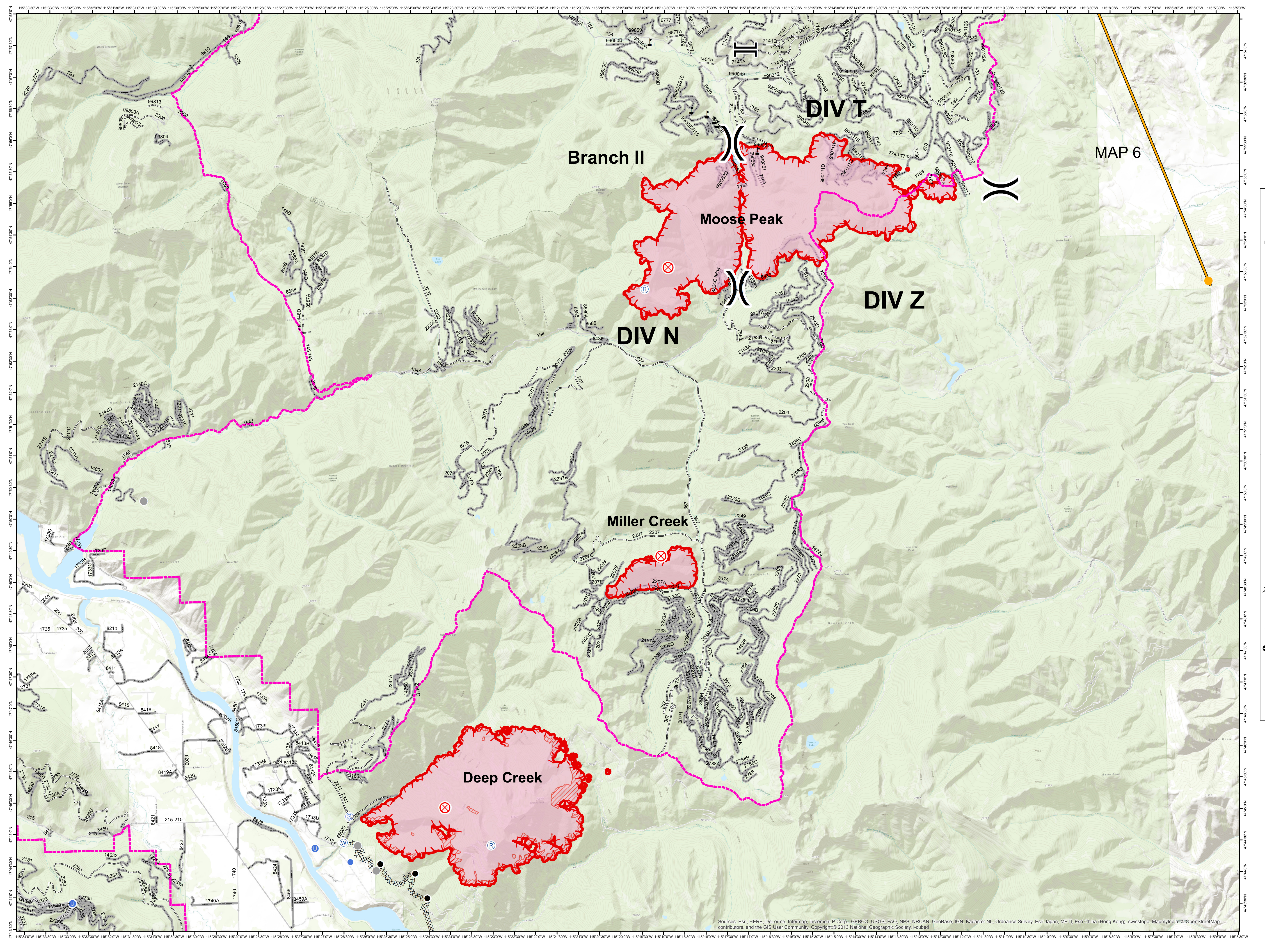
09/08/2017

0 0.5 1 Miles

N



- Closed Roads
- HWY Legal
- 4 Roads Open to Highway
- Legal Vehicles Only, Seasonal
- 14 State or US Highway
- Other Public Roads
- Drop Point
- Fire Origin
- Unimproved Landing Area
- Helispot
- Repeater
- Staging Area
- Water Source
- Value at Risk
- Other
- Division Break
- Branch Break
- Uncontrolled Fire Edge
- Completed Dozer Line
- Planned Fire Line
- Management Action Point
- Other
- Wildfire Daily Fire Perimeter
- IR Intense Heat
- Closure Area



Sources: Esri, HERE, DeLorme, Intermap, increment P Corp., GEBCO, USGS, FAO, NPS, NRCAN, GeoBase, IGN, Kadaster NL, Ordnance Survey, Esri Japan, METI, Esri China (Hong Kong), swisstopo, MapmyIndia, © OpenStreetMap contributors, and the GIS User Community, Copyright © 2013 National Geographic Society, i-cubed



E. Hahn
09/07/2017 @ 2309
Datum: NAD 83
Projection: UTM Zone 11 N