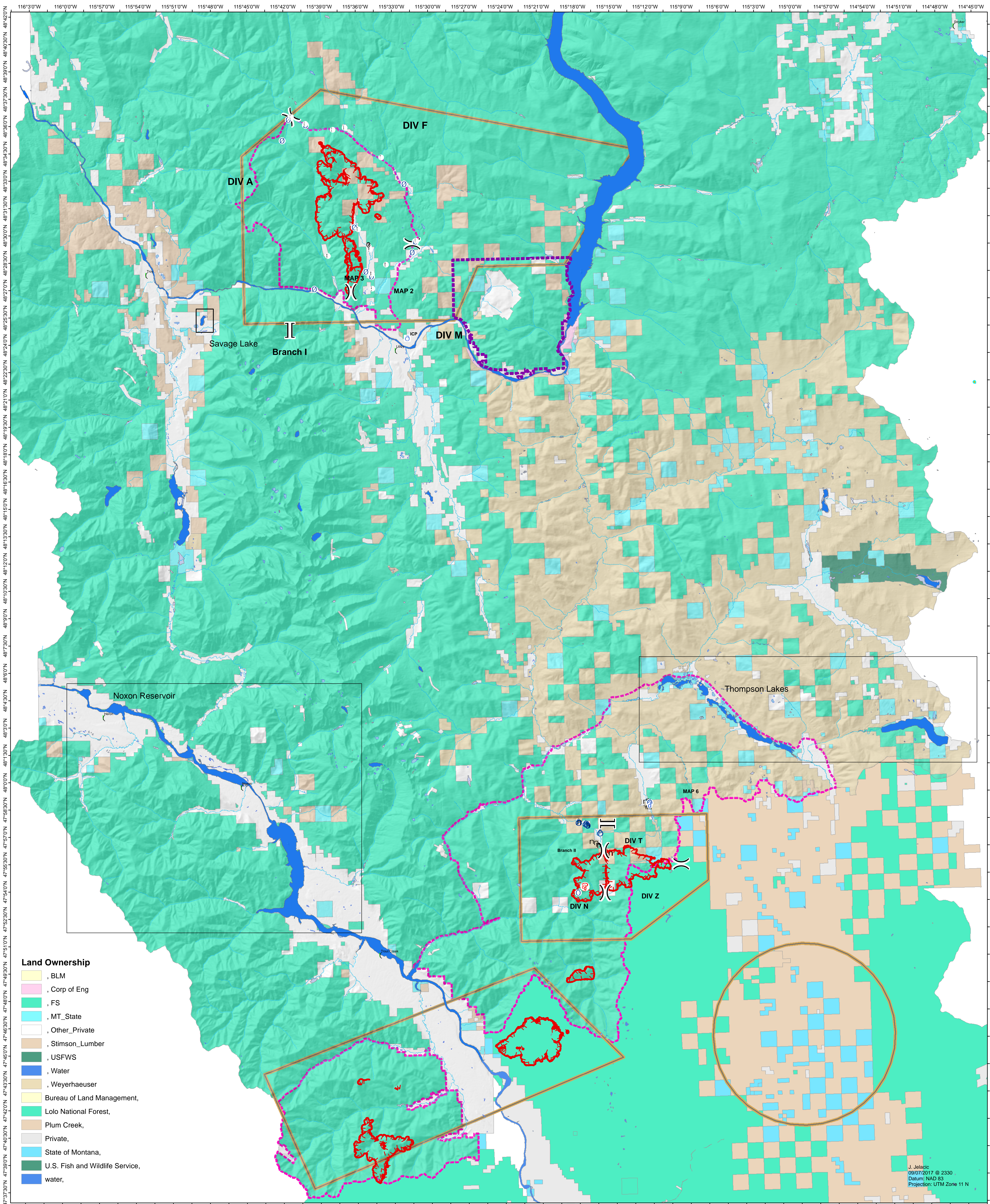


# West Fork/Moose Peak AIR OPS-BRIEFING MAP 09/09/2017

- g Value at Risk
- i Drop Point
- Fire Origin
- Repeater
- Camp
- Helispot
- )) Division Break
- [[ Branch Break
- Uncontrolled Fire Edge

- Modified Ground Response Area
- Closure Area
- Hydrologic Areas of Concern
- TFR Area

0.5 1 2 3 4 5 Miles



- ### Land Ownership
- BLM
  - Corp of Eng
  - FS
  - MT\_State
  - Other\_Private
  - Stimson\_Lumber
  - USFWS
  - Water
  - Weyerhaeuser
  - Bureau of Land Management,
  - Lolo National Forest,
  - Plum Creek,
  - Private,
  - State of Montana,
  - U.S. Fish and Wildlife Service,
  - water,

J. Jelacic  
09/07/2017 @ 2330  
Datum: NAD 83  
Projection: UTM Zone 11 N