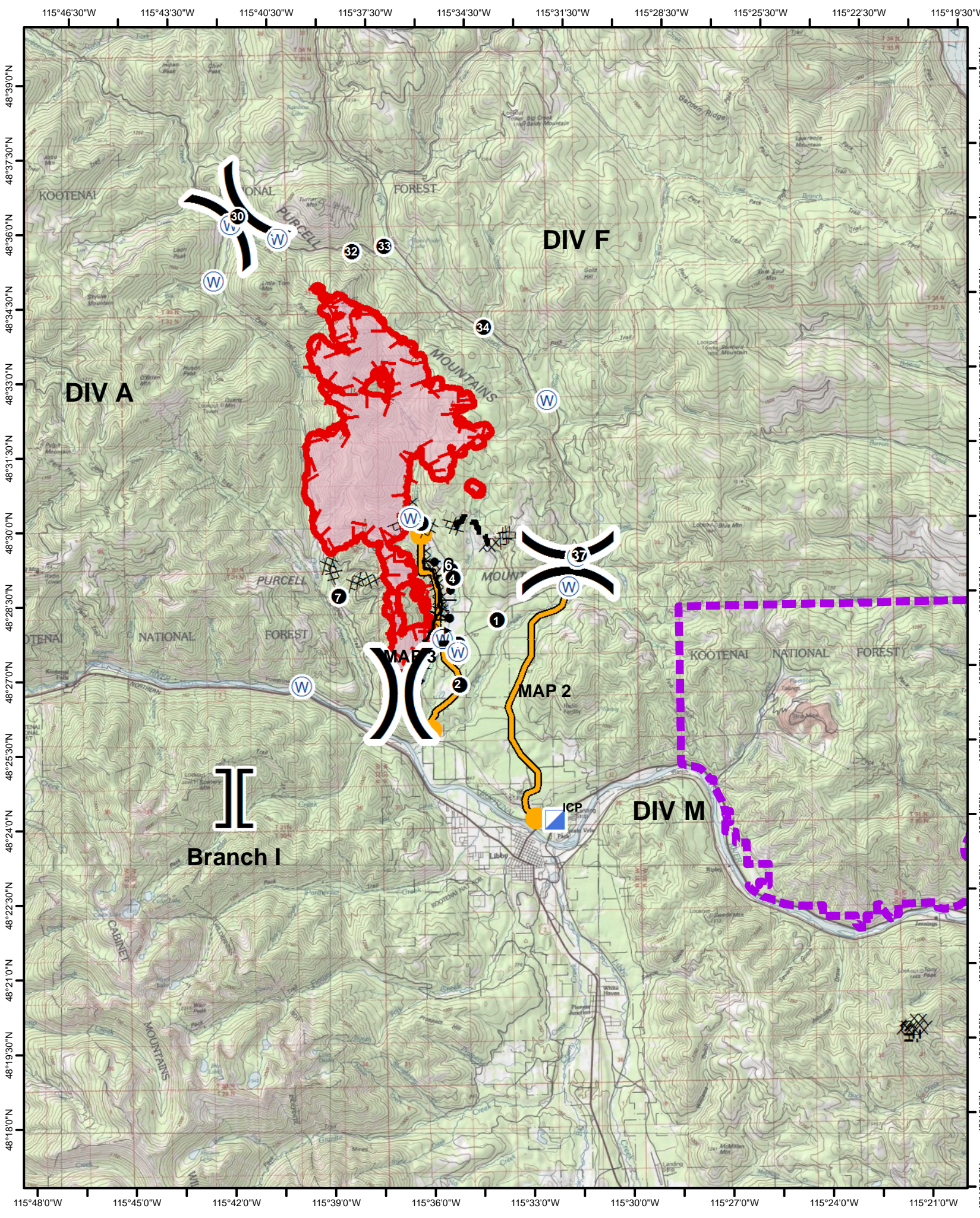


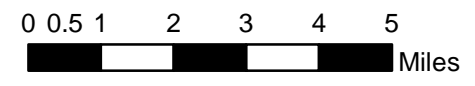


West Fork Fire Point Locations

Feature Type	PointName	Longitude	Latitude
Drop Point	DP 31	-115° 40.292'	48° 35.912'
Drop Point	DP 32	-115° 38.037'	48° 35.566'
Drop Point	DP 33	-115° 37.044'	48° 35.660'
Drop Point	DP 34	-115° 34.071'	48° 34.000'
Drop Point	DP 5	-115° 36.082'	48° 30.080'
Drop Point	DP 6	-115° 35.218'	48° 29.112'
Drop Point	DP 4	-115° 35.148'	48° 28.960'
Drop Point	DP 7	-115° 38.611'	48° 28.641'
Drop Point	DP 3	-115° 35.017'	48° 27.623'
Drop Point	DP 1	-115° 33.833'	48° 28.112'
Drop Point	DP 2	-115° 35.003'	48° 26.808'
Incident Command Post	ICP	-115° 32.188'	48° 24.052'
Water Source	Water Source	-115° 36.389'	48° 30.193'
Branch Break	Branch II	-115° 16.620'	47° 57.202'
Division Break	A/F	-115° 41.458'	48° 36.301'
Division Break	F/M	-115° 31.651'	48° 29.229'
Division Break	A/M	-115° 36.771'	48° 26.658'
Branch Break	Branch I	-115° 41.859'	48° 24.595'
Water Source	Water Source	-115° 35.503'	48° 27.742'
Water Source	Water Source	-115° 31.649'	48° 28.753'
Water Source	Water Source	-115° 31.377'	48° 29.340'
Water Source	Water Source	-115° 41.696'	48° 36.149'
Water Source	Water Source	-115° 40.279'	48° 35.845'
Water Source	Water Source	-115° 42.230'	48° 35.011'
Water Source	Water Source	-115° 39.772'	48° 26.830'
Drop Point	DP 30	-115° 41.458'	48° 36.301'
Drop Point	DP 37	-115° 31.309'	48° 29.383'
Water Source	<null>	-115° 32.217'	48° 32.513'
Value at Risk	<null>	-115° 35.413'	48° 27.784'
Water Source	<null>	-115° 35.054'	48° 27.472'



Moose Peak
 MTKNF-000222
 09/09/2017



Legend

- Modified Ground Response Area
- Drop Point
- Incident Command Post
- Water Source
- Value at Risk
- Division Break
- Branch Break
- Uncontrolled Fire Edge
- Completed Dozer Line
- Completed Hand Line
- Active Burnout
- Completed Burnout
- Proposed Dozer Line
- Planned Fire Line
- Management Action Point
- Wildfire Daily Fire Perimeter
- Closure Area