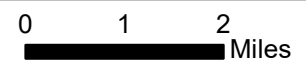
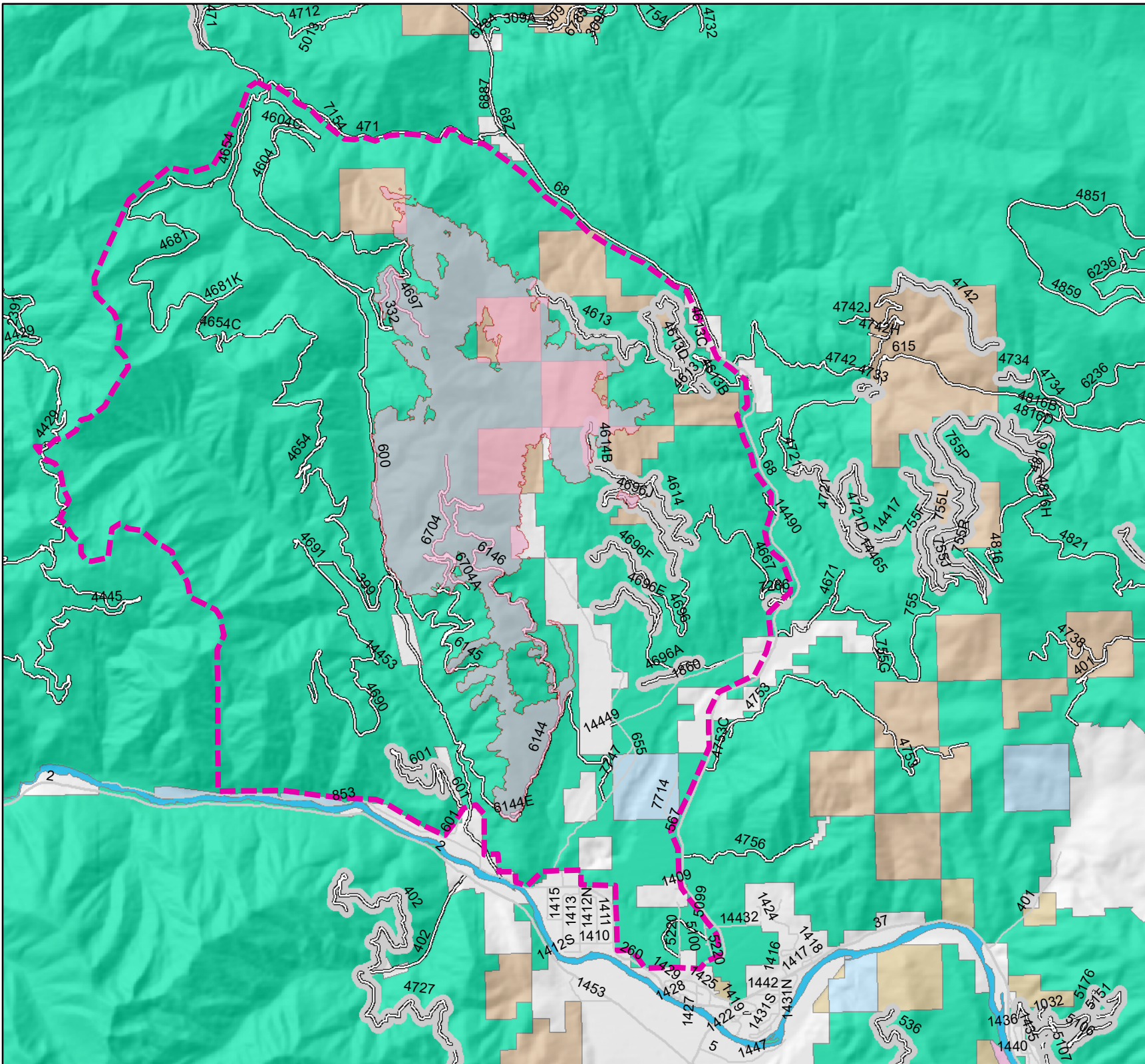


# WEST FORK Public Information 09/10/2017



- Legend**
- Land Ownership**
- , BLM
  - , Corp of Eng
  - , FS
  - , MT\_State
  - , Other\_Private
  - , Stimson\_Lumber
  - , USFWS
  - , Water
  - , Weyerhaeuser
  - Bureau of Land Management,
  - Lolo National Forest,
  - Plum Creek,
  - Private,
  - State of Montana,
  - U.S. Fish and Wildlife Service,
  - water,
- Closure Area



J. Jelacic  
09/09/2017  
2000  
Datum: NAD 1983  
Projection: UTM Zone 11N