

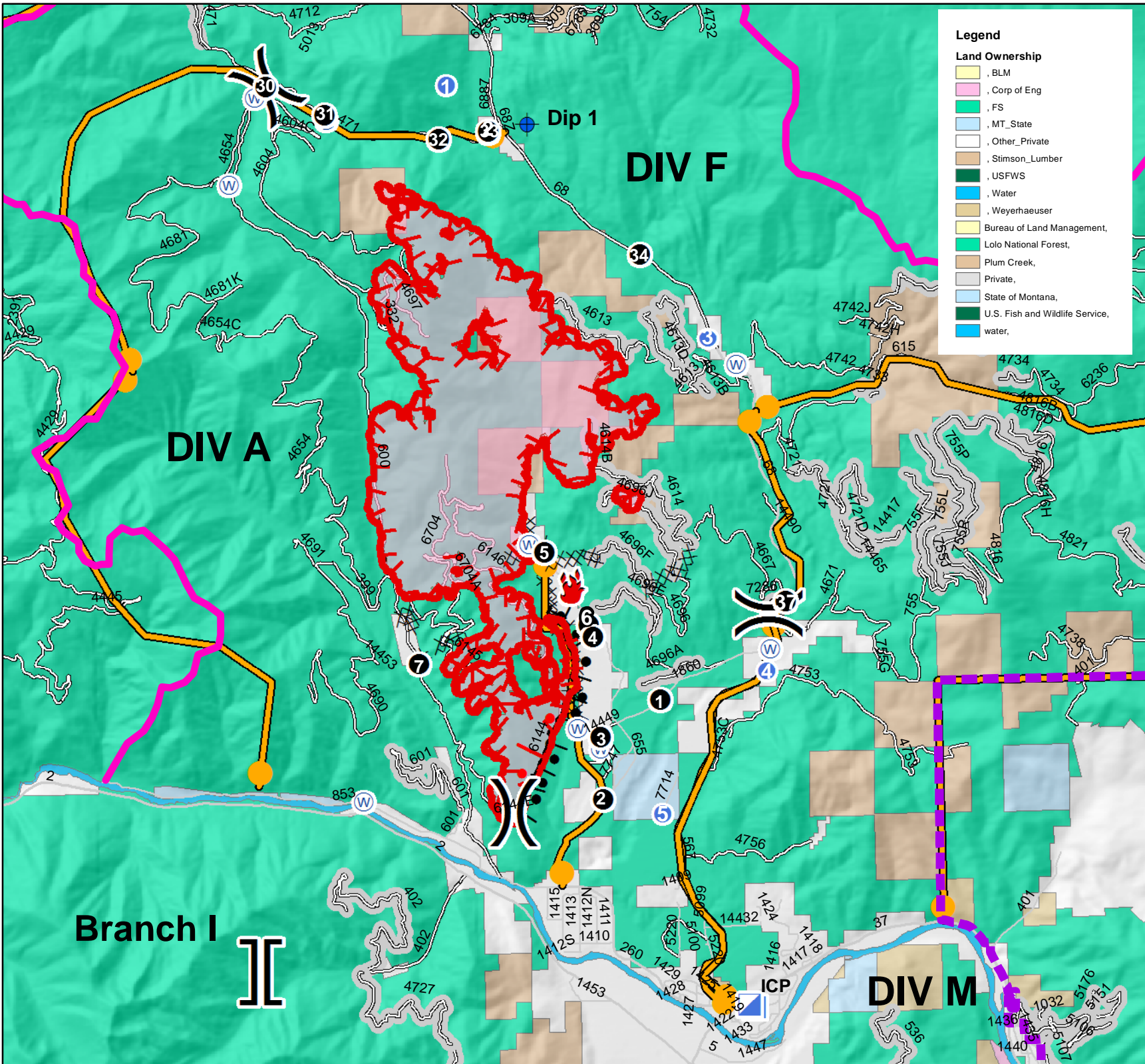
**WEST FORK
MTKNF-000222
09/10/2017**



Legend

Land Ownership

- BLM
- Corp of Eng
- FS
- MT_State
- Other_Private
- Stimson_Lumber
- USFWS
- Water
- Weyerhaeuser
- Bureau of Land Management,
- Lolo National Forest,
- Plum Creek,
- Private,
- State of Montana,
- U.S. Fish and Wildlife Service,
- water,



- Response Area
- Modified Ground Response Area
- Drop Point
- Dip Site
- Spot Fire
- Helipad
- Incident Command Post
- Water Source
- Value at Risk
- Division Break
- Branch Break
- Uncontrolled Fire Edge
- Completed Dozer Line
- Active Burnout
- Completed Burnout
- Management Action Point
- Wildfire Daily Fire Perimeter
- Closure Area

Branch I

