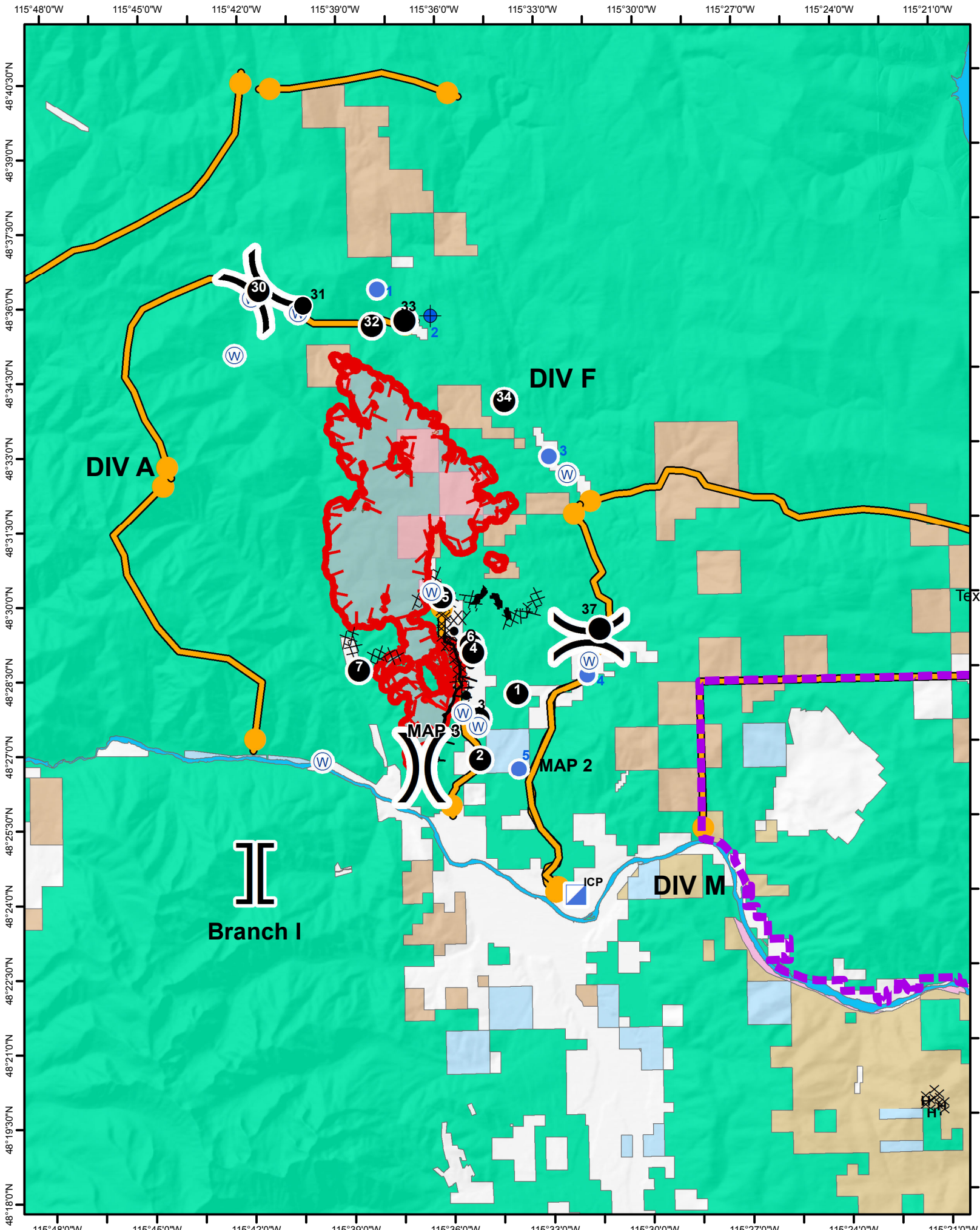




West Fork Fire Point Locations

Feature Category (Point Type)	Name	Latitude	Longitude
Drop Point	DP 31	48° 35.912'	-115° 40.292'
Drop Point	DP 32	48° 35.566'	-115° 38.037'
Drop Point	DP 33	48° 35.660'	-115° 37.044'
Drop Point	DP 34	48° 34.000'	-115° 34.071'
Drop Point	DP 5	48° 30.080'	-115° 36.082'
Drop Point	DP 6	48° 29.112'	-115° 35.218'
Drop Point	DP 4	48° 28.960'	-115° 35.148'
Drop Point	DP 7	48° 28.641'	-115° 38.611'
Drop Point	DP 3	48° 27.623'	-115° 35.017'
Drop Point	DP 1	48° 28.112'	-115° 33.833'
Drop Point	DP 2	48° 26.808'	-115° 35.003'
Incident Command Post	ICP	48° 24.052'	-115° 32.188'
Water Source	Water Source	48° 30.193'	-115° 36.389'
Branch Break	Branch II	47° 57.202'	-115° 16.620'
Division Break	A/F	48° 36.301'	-115° 41.458'
Division Break	F/M	48° 29.229'	-115° 31.651'
Division Break	A/M	48° 26.658'	-115° 36.771'
Branch Break	Branch I	48° 24.595'	-115° 41.859'
Water Source	Water Source	48° 27.742'	-115° 35.503'
Water Source	Water Source	48° 28.753'	-115° 31.649'
Water Source	Water Source	48° 29.340'	-115° 31.377'
Water Source	Water Source	48° 36.149'	-115° 41.696'
Water Source	Water Source	48° 35.845'	-115° 40.279'
Water Source	Water Source	48° 35.011'	-115° 42.230'
Water Source	Water Source	48° 26.830'	-115° 39.772'
Drop Point	DP 30	48° 36.301'	-115° 41.458'
Drop Point	<null>	<null>	<null>
Water Source	<null>	48° 32.513'	-115° 32.217'
Value at Risk	<null>	48° 27.784'	-115° 35.413'
Water Source	<null>	48° 27.472'	-115° 35.054'



**West Fork
MT -KNF-00222
09/10/2017**

NAD 83 Datum Zone 11N



E. Hahn
09/09/2017
2300 Hours

- Dip Site
- Drop Point
- Helispot
- Incident Command Post
- Water Source
- Value at Risk
- Division Break
- Branch Break
- Uncontrolled Fire Edge
- Completed Dozer Line
- Completed Hand Line
- Active Burnout
- Completed Burnout
- Proposed Dozer Line
- Planned Fire Line
- Management Action Point
- Wildfire Daily Fire Perimeter
- Closure Area
- Modified Ground Response Area
- Corp of Eng
- FS
- MT_State
- Other_Private
- Stimson_Lumber
- Water
- Weyerhaeuser