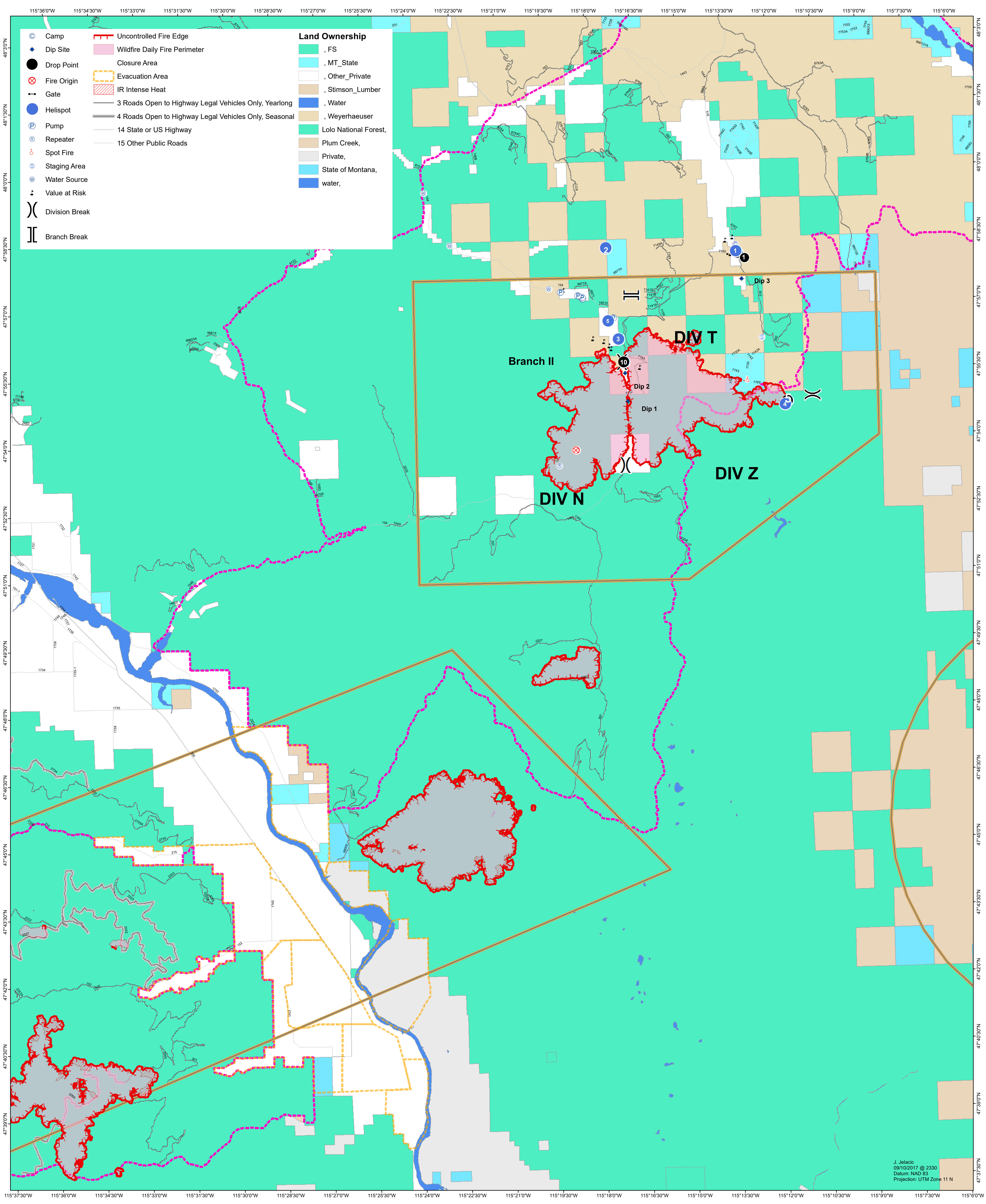
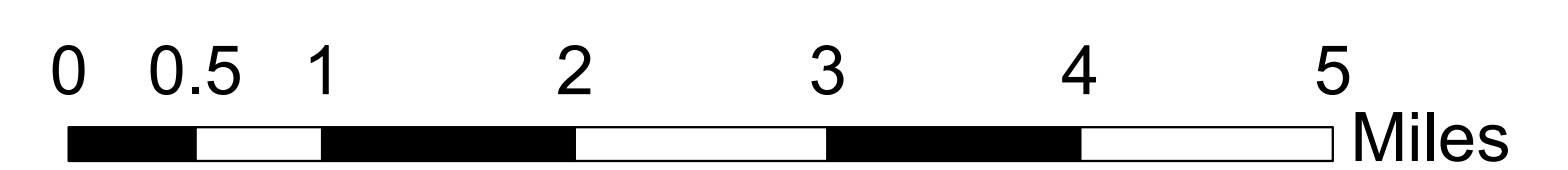


Moose Peak AIR OPS-BRIEFING MAP 09/11/2017



⊙	Camp	—	Uncontrolled Fire Edge	Land Ownership
⊕	Dip Site	—	Wildfire Daily Fire Perimeter	FS
●	Drop Point	—	Closure Area	MT_State
⊗	Fire Origin	—	Evacuation Area	Other_Private
→	Gate	—	IR Intense Heat	Stimson_Lumber
⊙	Helispot	—	3 Roads Open to Highway Legal Vehicles Only, Yearlong	Water
⊙	Pump	—	4 Roads Open to Highway Legal Vehicles Only, Seasonal	Weyerhaeuser
⊙	Repeater	—	14 State or US Highway	Lolo National Forest,
⊙	Spot Fire	—	15 Other Public Roads	Plum Creek,
⊙	Staging Area	—		Private,
⊙	Water Source	—		State of Montana,
⊙	Value at Risk	—		water,
()	Division Break			
	Branch Break			