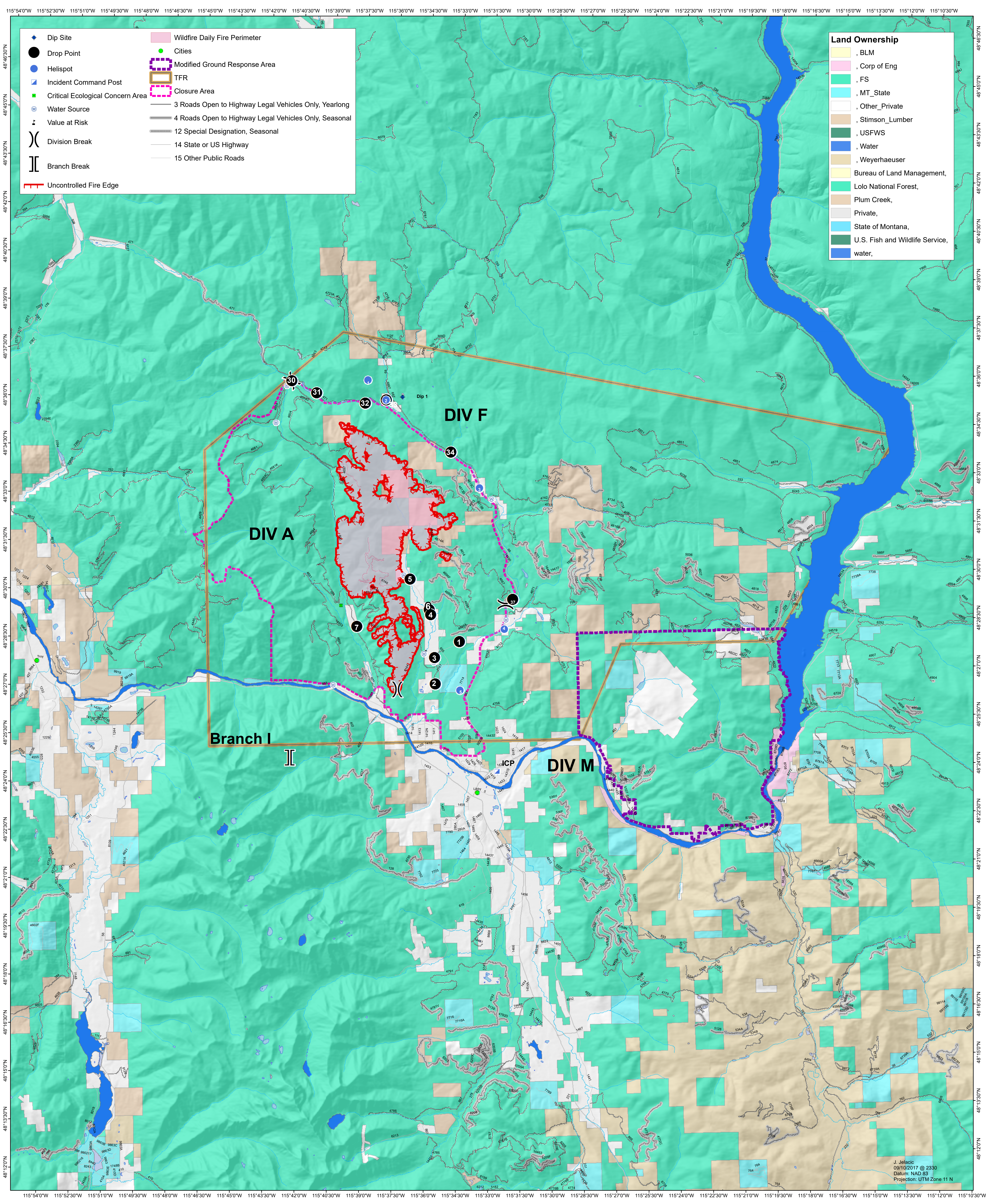


West Fork AIR OPS-BRIEFING MAP 09/11/2017

0 0.5 1 2 3 4 5 Miles



- + Dip Site
- Drop Point
- Helispot
- ▢ Incident Command Post
- Critical Ecological Concern Area
- ⊙ Water Source
- ⚠ Value at Risk
- ⎓ Division Break
- ⎓ Branch Break
- Uncontrolled Fire Edge
- Wildfire Daily Fire Perimeter
- ⬭ Modified Ground Response Area
- ⬭ TFR
- ⬭ Closure Area
- 3 Roads Open to Highway Legal Vehicles Only, Yearlong
- 4 Roads Open to Highway Legal Vehicles Only, Seasonal
- 12 Special Designation, Seasonal
- 14 State or US Highway
- 15 Other Public Roads

- ### Land Ownership
- BLM
 - Corp of Eng
 - FS
 - MT_State
 - Other_Private
 - Stimson_Lumber
 - USFWS
 - Water
 - Weyerhaeuser
 - Bureau of Land Management,
 - Lolo National Forest,
 - Plum Creek,
 - Private,
 - State of Montana,
 - U.S. Fish and Wildlife Service,
 - water,

DIV A

DIV F

Branch I

DIV M

ICP