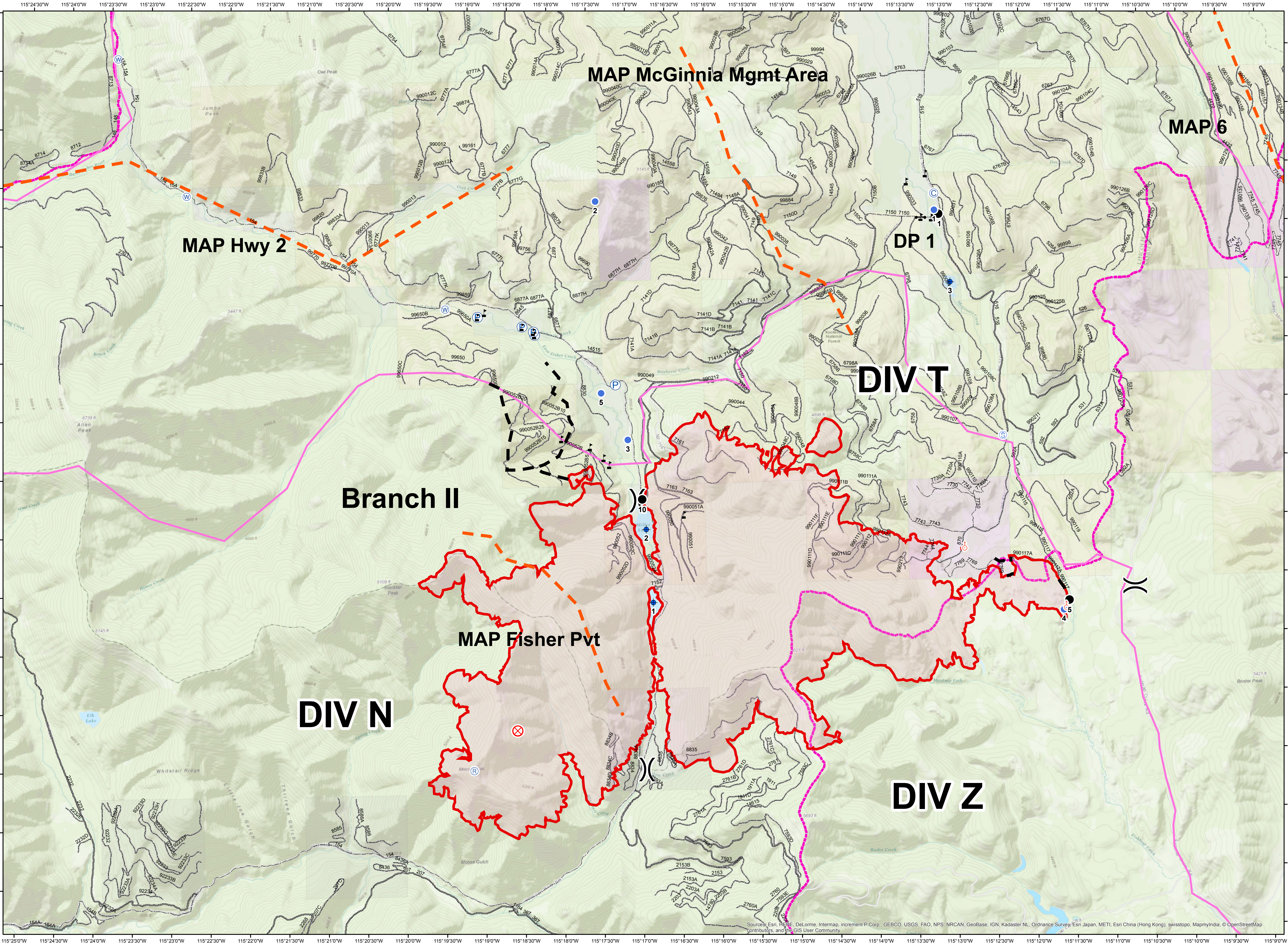


# Moose Peak MT-KNF-000225

## Operations 09/11/2017



- Camp
- Dip Site
- Drop Point
- Fire Origin
- Gate
- Helispot
- Pump
- Repeater
- Spot Fire
- Staging Area
- Water Source
- Value at Risk
- Division Break
- Uncontrolled Fire Edge
- Completed Dozer Line
- Management Action Point
- Other
- Wildfire Daily Fire Perimeter
- Closure Area
- Closed Roads
- HWY Legal
- Other Public Roads
- FS
- State of Montana,
- Weyerhaeuser
- Other Private
- Water



E. Hahn  
09/10/2017 @ 2100  
Datum: NAD 83  
Projection: UTM Zone 11 N

Sources: Esri, HERE, DeLorme, Intermap, increment P Corp., GEBCO, USGS, FAO, NPS, NRCAN, GeoBase, IGN, Kadaster NL, Ordnance Survey, Esri Japan, METI, Esri China (Hong Kong), swisstopo, MapmyIndia, © OpenStreetMap contributors, and the GIS User Community