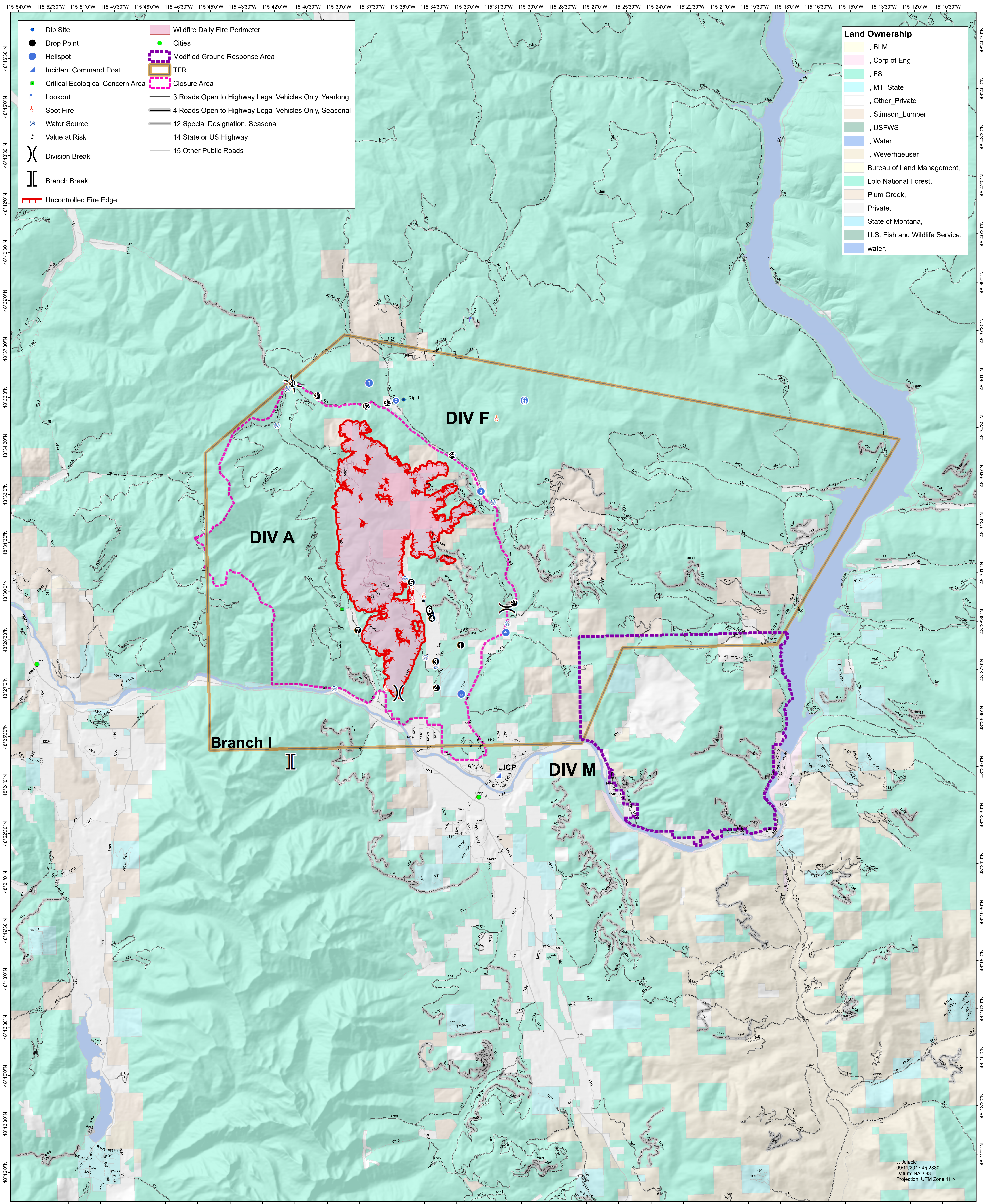


West Fork AIR OPS-BRIEFING MAP 09/12/2017

0 0.5 1 2 3 4 5 Miles



Land Ownership	
[Yellow]	, BLM
[Pink]	, Corp of Eng
[Light Green]	, FS
[Light Blue]	, MT_State
[White]	, Other_Private
[Orange]	, Stimson_Lumber
[Dark Green]	, USFWS
[Blue]	, Water
[Light Orange]	, Weyerhaeuser
[Yellow]	Bureau of Land Management,
[Light Green]	Lolo National Forest,
[Light Blue]	Plum Creek,
[White]	Private,
[Light Blue]	State of Montana,
[Dark Green]	U.S. Fish and Wildlife Service,
[Blue]	water,