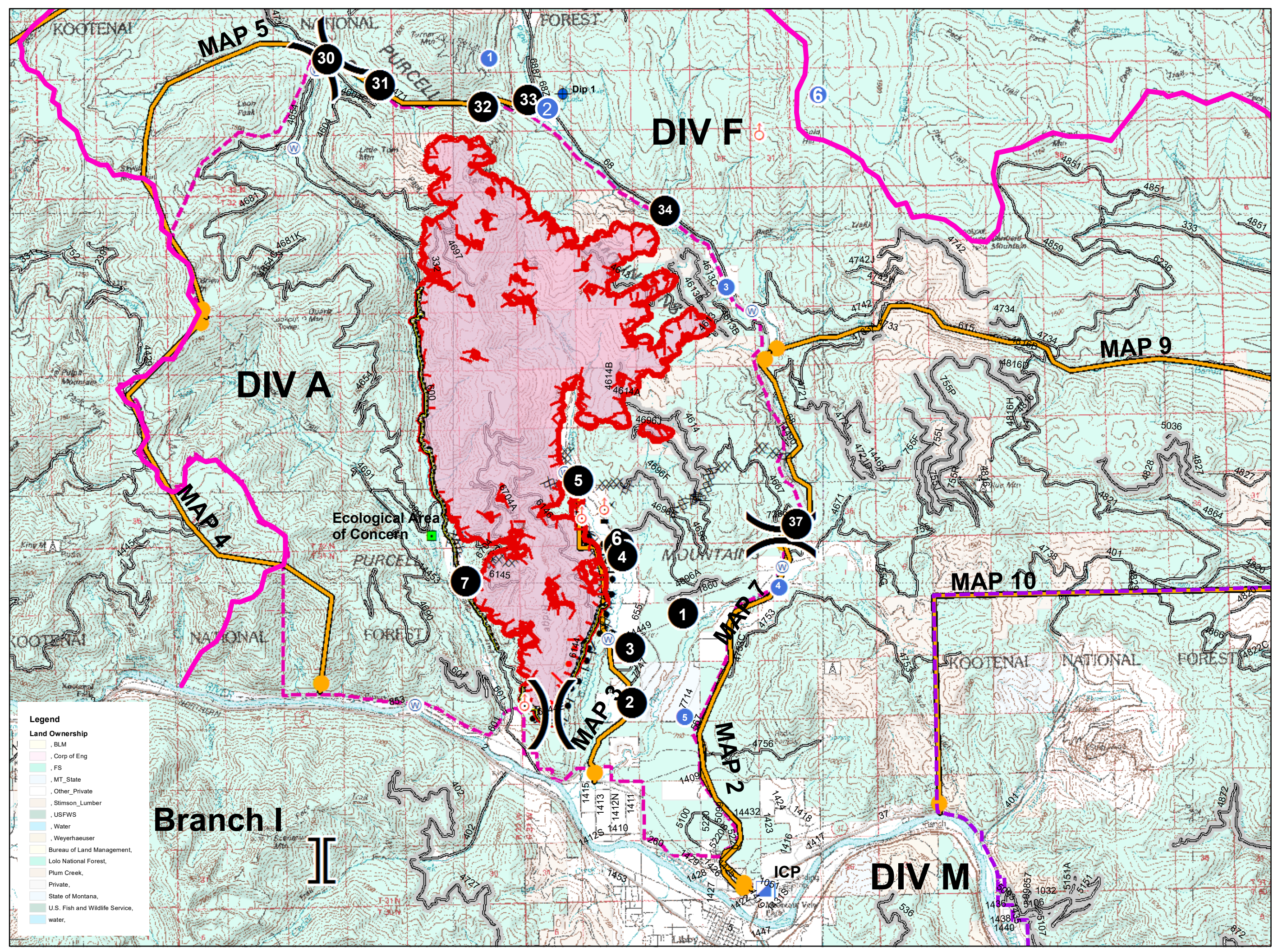


- IA Response Area
- Comm Towers
- Modified Ground Response Area
- Drop Point
- Dip Site
- Helispot
- Incident Command Post
- Ecologically Critical Area
- Spot Fire
- Water Source
- Value at Risk
- Division Break
- Branch Break
- Uncontrolled Fire Edge
- Completed Dozer Line
- Road as Completed Line
- Active Burnout
- Completed Burnout
- Management Action Point
- Wildfire Daily Fire Perimeter
- Closure Area



- Legend**
- Land Ownership**
- BLM
 - Corp of Eng
 - FS
 - MT_State
 - Other_Private
 - Stimson_Lumber
 - USFWS
 - Water
 - Weyerhaeuser
 - Bureau of Land Management,
 - Lolo National Forest,
 - Plum Creek,
 - Private,
 - State of Montana,
 - U.S. Fish and Wildlife Service,
 - water,

Branch I