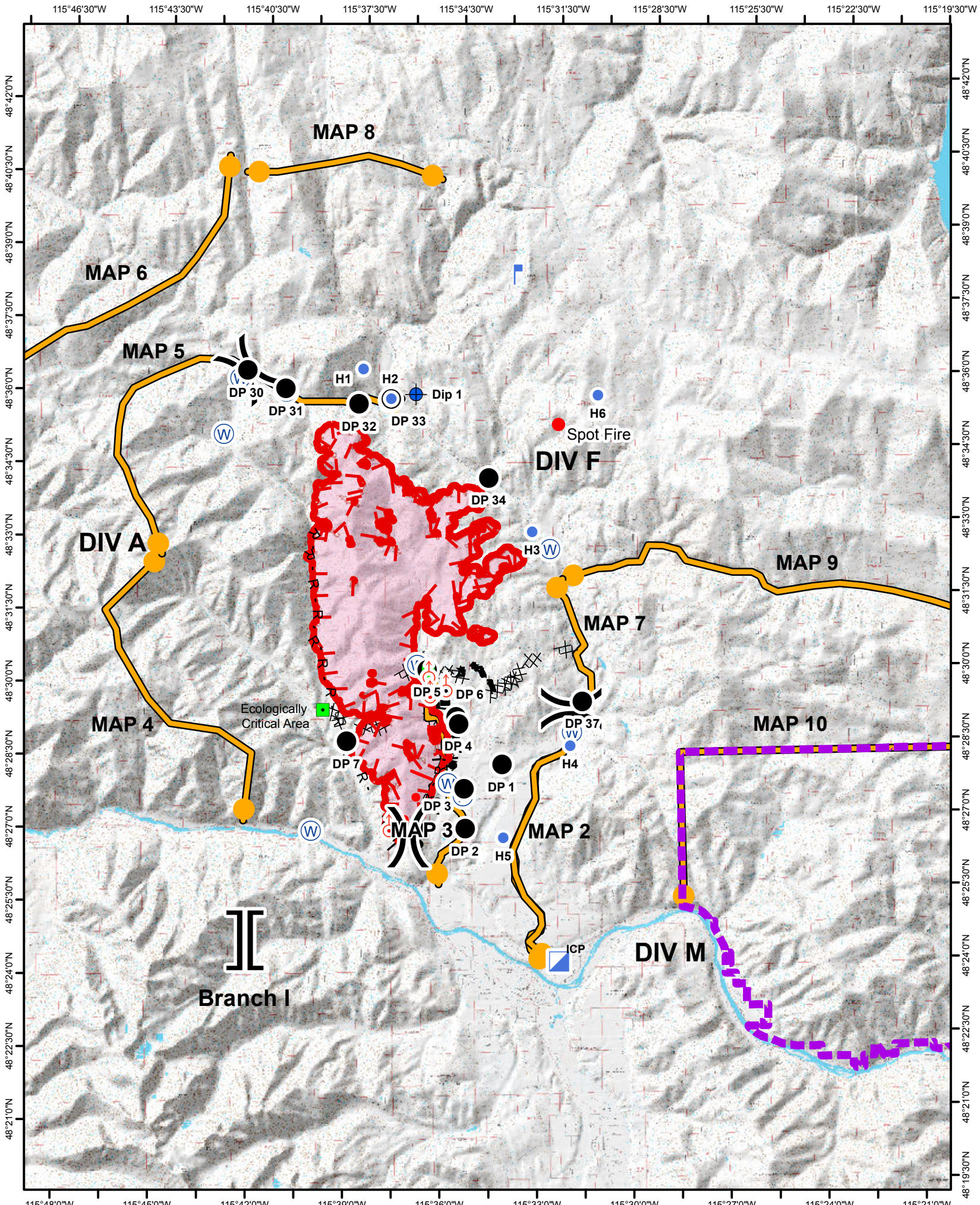


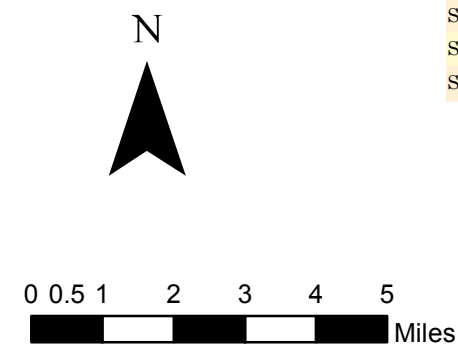


# West Fork Fire Points Locations

Feature Category (Point Type)	Latitude	Longitude
Drop Point	31	48° 35.912' -115° 40.292'
Drop Point	32	48° 35.566' -115° 38.037'
Drop Point	33	48° 35.660' -115° 37.044'
Drop Point	34	48° 34.000' -115° 34.071'
Drop Point	5	48° 30.080' -115° 36.082'
Drop Point	6	48° 29.112' -115° 35.218'
Drop Point	4	48° 28.960' -115° 35.148'
Drop Point	7	48° 28.641' -115° 38.611'
Drop Point	3	48° 27.623' -115° 35.017'
Drop Point	1	48° 28.112' -115° 33.833'
Drop Point	2	48° 26.808' -115° 35.003'
Incident Command Post	ICP	48° 24.052' -115° 32.188'
Water Source	Water Source	48° 30.193' -115° 36.389'
Branch Break	Branch II	47° 57.202' -115° 16.620'
Division Break	DIV F	48° 36.301' -115° 41.458'
Division Break	DIV M	48° 29.229' -115° 31.651'
Division Break	DIV A	48° 26.658' -115° 36.771'
Branch Break	Branch I	48° 24.595' -115° 41.859'
Water Source	Water Source	48° 27.742' -115° 35.503'
Water Source	Water Source	48° 28.753' -115° 31.649'
Water Source	Water Source	48° 36.149' -115° 41.696'
Water Source	Water Source	48° 35.845' -115° 40.279'
Water Source	Water Source	48° 35.011' -115° 42.230'
Water Source	Water Source	48° 26.830' -115° 39.772'
Drop Point	30	48° 36.301' -115° 41.458'
Drop Point	37	48° 29.383' -115° 31.309'
Water Source	<null>	48° 35.635' -115° 37.054'
Water Source	Water Source	48° 32.513' -115° 32.217'
Value at Risk	Residence	48° 27.784' -115° 35.413'
Water Source	Water Source	48° 27.472' -115° 35.054'
Dip Site	1	48° 35.740' -115° 36.271'
Helispot	1	48° 36.280' -115° 37.880'
Helispot	2	48° 35.660' -115° 37.044'
Helispot	3	48° 32.870' -115° 32.760'
Helispot	4	48° 28.470' -115° 31.720'
Helispot	5	48° 26.600' -115° 33.840'
Spot Fire	Spot Fire	48° 29.642' -115° 35.523'
Lookout	Bald Mountain Lookout	48° 38.175' -115° 33.158'
Feature Category (Point Type)	Latitude	Longitude
Value at Risk	<null>	48° 29.551' -115° 35.516'
Spot Fire	Spot south of DP 5	48° 29.919' -115° 36.044'
Landmark	White Pine Progeny Area.	48° 29.301' -115° 39.325'
Landmark	Vermiculite outcrop	48° 30.014' -115° 36.048'
Helispot	6	48° 35.650' -115° 30.650'
Spot Fire	<null>	48° 29.525' -115° 36.024'
Spot Fire	Spot Fire	48° 35.080' -115° 31.968'
Spot Fire	Spot Fire	48° 26.791' -115° 37.360'



- Modified Ground Response Area
- Dip Site
- Drop Point
- Helispot
- Incident Command Post
- Landmark
- Lookout
- Spot Fire
- Water Source
- Value at Risk
- Division Break
- Branch Break
- Uncontrolled Fire Edge
- Completed Dozer Line
- R - Road as Completed Line
- Active Burnout
- Completed Burnout
- Proposed Dozer Line
- Planned Fire Line
- Management Action Point
- Wildfire Daily Fire Perimeter
- Corp of Eng
- FS
- State of Montana
- Other Private
- Private Industrial
- Water



**West Fork**  
**MT -KNF-000222**  
**09/12/2017**  
 NAD 83 Datum Zone 11N