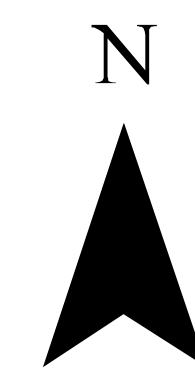
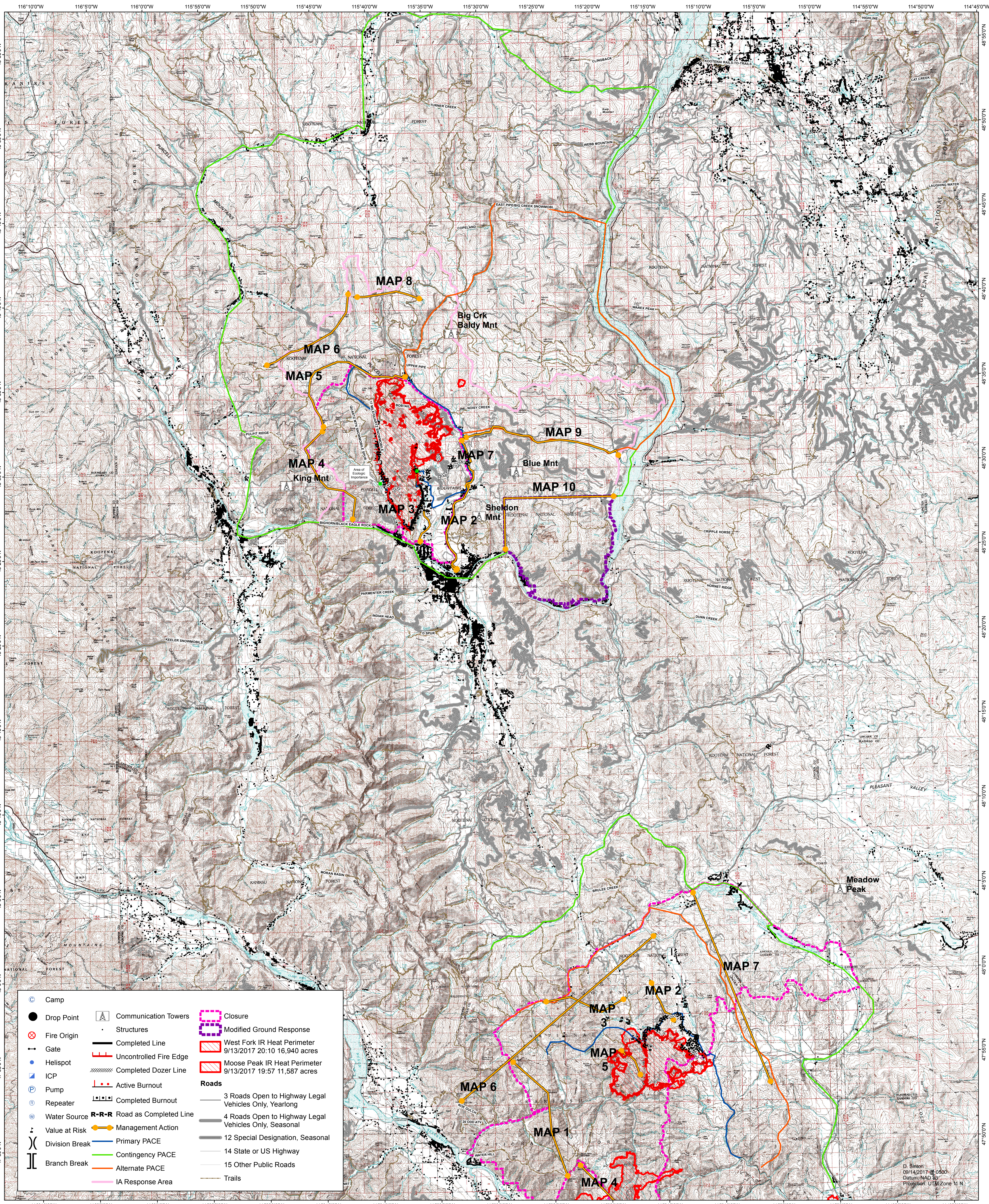


West Fork/Moose Peak PLANNING MAP 09/14/2017



0 1 2 3 4 5
Miles



| | | | | | |
|--|----------------|--|------------------------------|--------------|--|
| | Camp | | Communication Towers | | Closure |
| | Drop Point | | Structures | | Modified Ground Response |
| | Fire Origin | | Completed Line | | West Fork IR Heat Perimeter 9/13/2017 20:10 16,940 acres |
| | Gate | | Uncontrolled Fire Edge | | Moose Peak IR Heat Perimeter 9/13/2017 19:57 11,587 acres |
| | Helispot | | Completed Dozer Line | Roads | |
| | ICP | | Active Burnout | | 3 Roads Open to Highway Legal Vehicles Only, Yearlong |
| | Pump | | Completed Burnout | | 4 Roads Open to Highway Legal Vehicles Only, Seasonal |
| | Repeater | | R-R-R Road as Completed Line | | 12 Special Designation, Seasonal |
| | Water Source | | Management Action | | 14 State or US Highway |
| | Value at Risk | | Contingency PACE | | 15 Other Public Roads |
| | Division Break | | Alternate PACE | | Trails |
| | Branch Break | | IA Response Area | | |

D. Simon
09/14/2017 @ 0500
Datum: NAD 83
Projection: UTM Zone 11 N