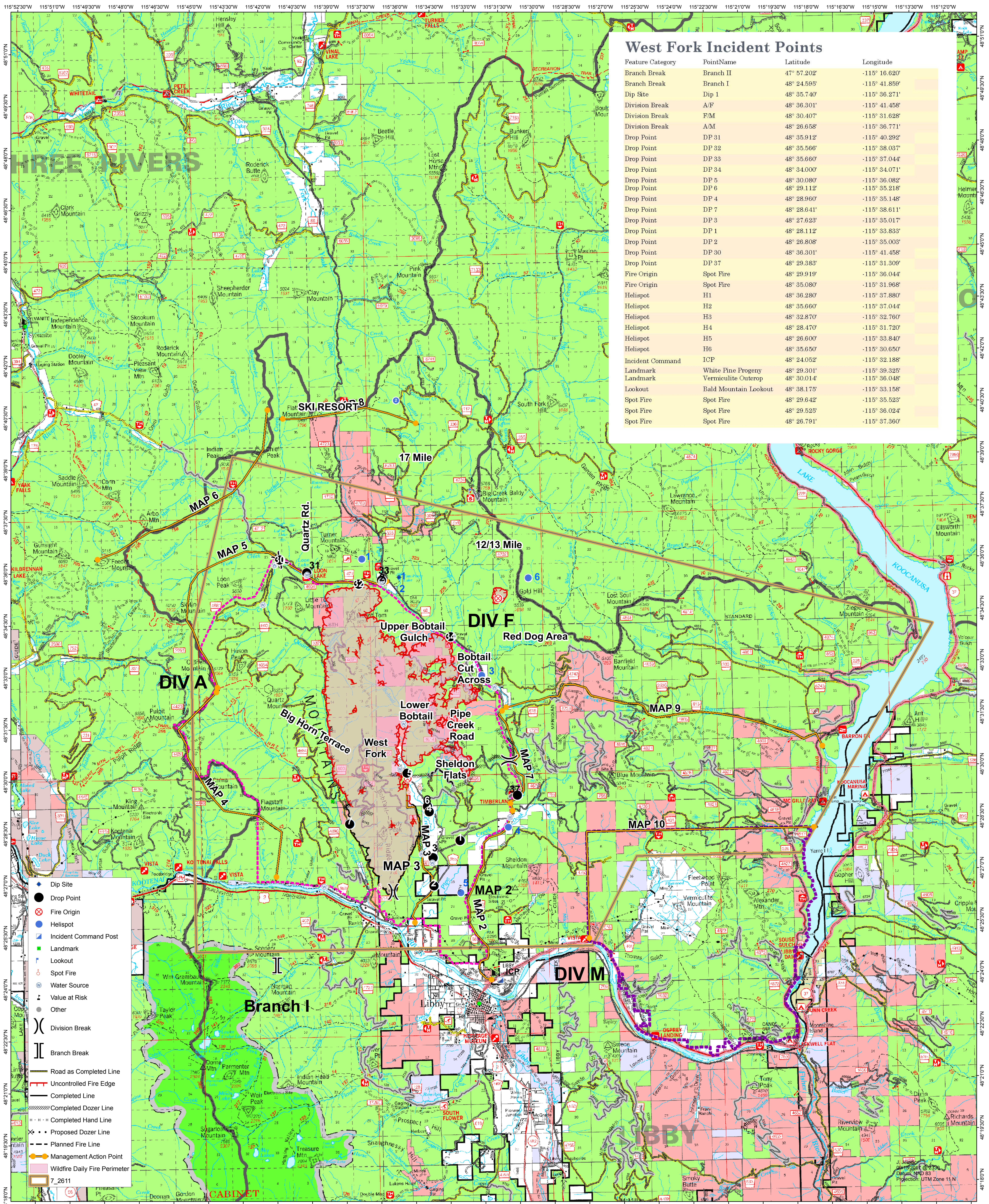


West Fork AIR OPS-BRIEFING MAP 09/16/2017

0 0.5 1 2 3 4 5 Miles



West Fork Incident Points

Feature Category	PointName	Latitude	Longitude
Branch Break	Branch II	47° 57.202'	-115° 16.620'
Branch Break	Branch I	48° 24.595'	-115° 41.859'
Dip Site	Dip 1	48° 35.740'	-115° 36.271'
Division Break	A/F	48° 36.301'	-115° 41.458'
Division Break	F/M	48° 30.407'	-115° 31.628'
Division Break	A/M	48° 26.658'	-115° 36.771'
Drop Point	DP 31	48° 35.912'	-115° 40.292'
Drop Point	DP 32	48° 35.566'	-115° 38.037'
Drop Point	DP 33	48° 35.660'	-115° 37.044'
Drop Point	DP 34	48° 34.000'	-115° 34.071'
Drop Point	DP 5	48° 30.080'	-115° 36.082'
Drop Point	DP 6	48° 29.112'	-115° 35.218'
Drop Point	DP 4	48° 28.960'	-115° 35.148'
Drop Point	DP 7	48° 28.641'	-115° 38.611'
Drop Point	DP 3	48° 27.623'	-115° 35.017'
Drop Point	DP 1	48° 28.112'	-115° 33.833'
Drop Point	DP 2	48° 26.808'	-115° 35.003'
Drop Point	DP 30	48° 36.301'	-115° 41.458'
Drop Point	DP 37	48° 29.383'	-115° 31.309'
Fire Origin	Spot Fire	48° 29.919'	-115° 36.044'
Fire Origin	Spot Fire	48° 35.080'	-115° 31.968'
Helispot	H1	48° 36.280'	-115° 37.880'
Helispot	H2	48° 35.660'	-115° 37.044'
Helispot	H3	48° 32.870'	-115° 32.760'
Helispot	H4	48° 28.470'	-115° 31.720'
Helispot	H5	48° 26.600'	-115° 33.840'
Helispot	H6	48° 35.650'	-115° 30.650'
Incident Command	ICP	48° 24.052'	-115° 32.188'
Landmark	White Pine Progeny	48° 29.301'	-115° 39.325'
Landmark	Vermiculite Outcrop	48° 30.014'	-115° 36.048'
Lookout	Bald Mountain Lookout	48° 38.175'	-115° 33.158'
Spot Fire	Spot Fire	48° 29.642'	-115° 35.523'
Spot Fire	Spot Fire	48° 29.525'	-115° 36.024'
Spot Fire	Spot Fire	48° 26.791'	-115° 37.360'

- Dip Site
- Drop Point
- Fire Origin
- Helispot
- Incident Command Post
- Landmark
- Lookout
- Spot Fire
- Value at Risk
- Other
- ⌋ Division Break
- ⌋ Branch Break
- Road as Completed Line
- Uncontrolled Fire Edge
- Completed Line
- Completed Dozer Line
- Completed Hand Line
- Proposed Dozer Line
- Planned Fire Line
- Management Action Point
- Wildfire Daily Fire Perimeter
- 7_2611