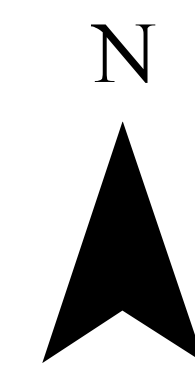
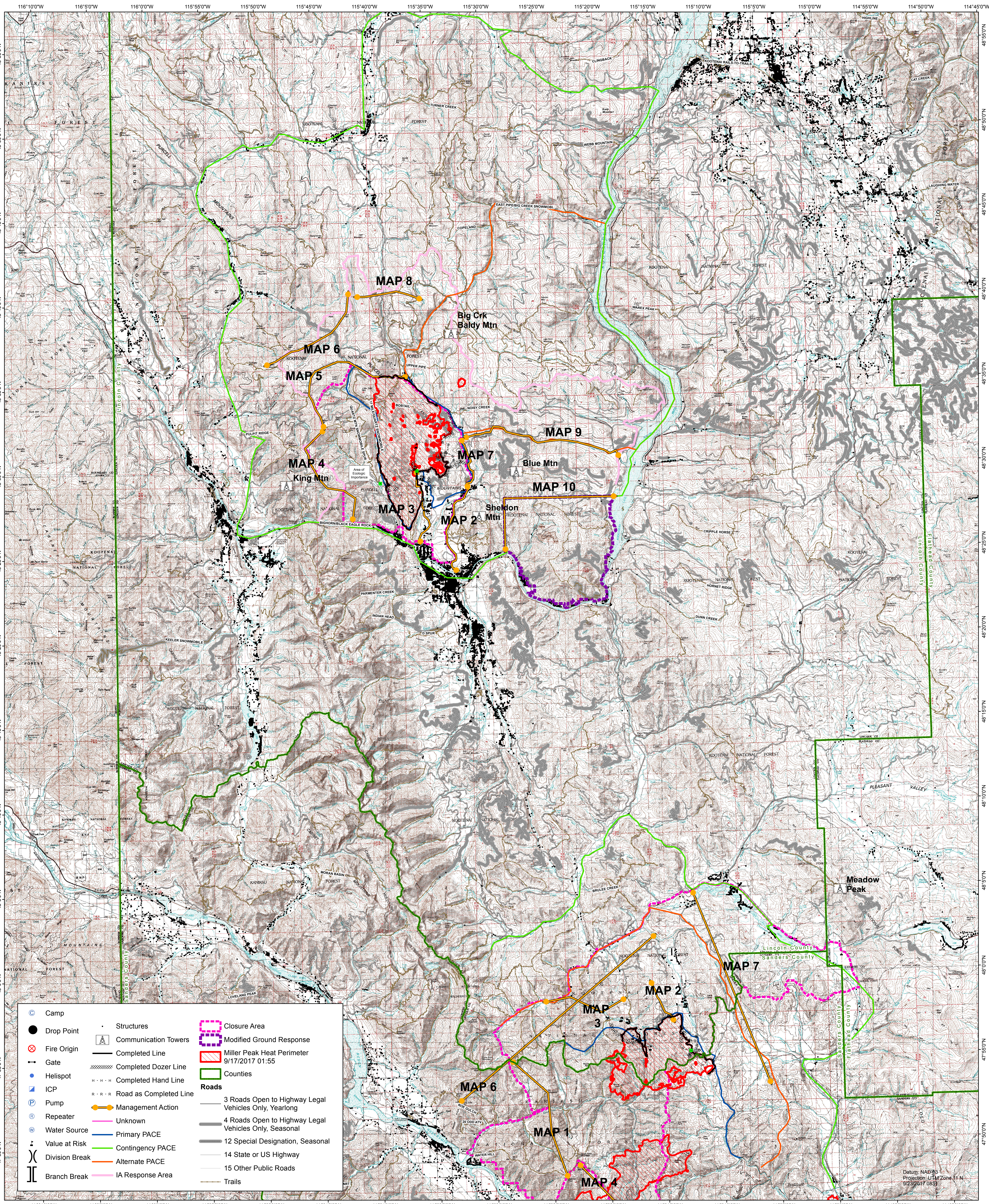


# West Fork/Moose Peak PLANNING MAP 09/24/2017



0 1 2 3 4 5  
Miles



	Camp		Structures		Closure Area
	Drop Point		Communication Towers		Miller Peak Heat Perimeter 9/17/2017 01:55
	Fire Origin		Completed Line		Counties
	Gate		Completed Dozer Line		Management Action
	Helispot		Completed Hand Line		Primary PACE
	ICP		Completed Hand Line		Contingency PACE
	Pump		Road as Completed Line		Alternate PACE
	Repeater		Unknown		IA Response Area
	Water Source		Primary PACE		Contingency PACE
	Value at Risk		Alternate PACE		Management Action
	Division Break		IA Response Area		Primary PACE
	Branch Break		Contingency PACE		Alternate PACE
			Trails		Miller Peak Heat Perimeter 9/17/2017 01:55
			3 Roads Open to Highway Legal Vehicles Only, Yearlong		Closure Area
			4 Roads Open to Highway Legal Vehicles Only, Seasonal		Miller Peak Heat Perimeter 9/17/2017 01:55
			12 Special Designation, Seasonal		Counties
			14 State or US Highway		Management Action
			15 Other Public Roads		Primary PACE

Datum: NAD83  
Projection: UTM Zone 11 N  
9/23/2017 08:53