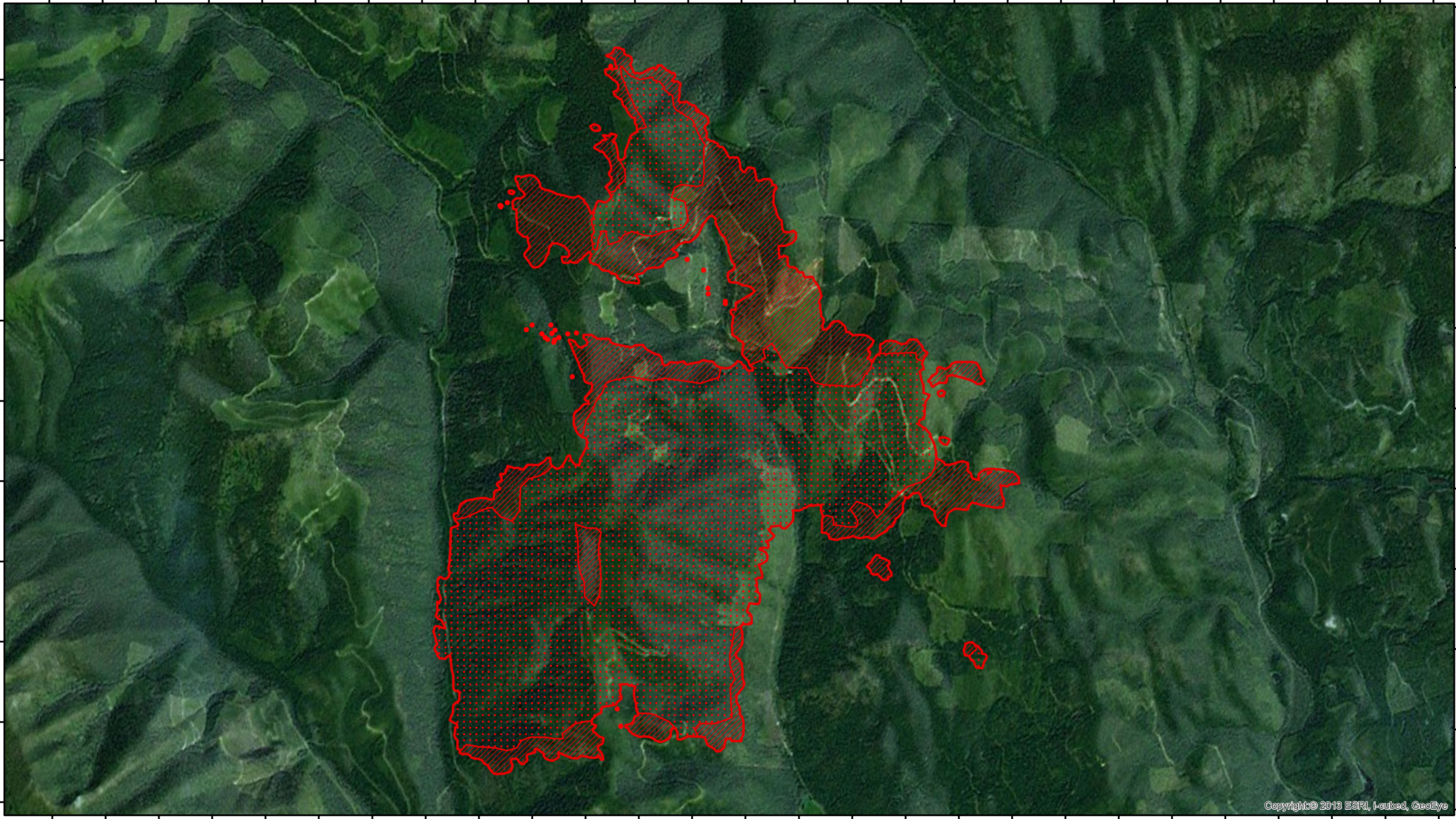


115°43'30"W 115°42'30"W 115°41'30"W 115°40'30"W 115°39'30"W 115°38'30"W 115°37'30"W 115°36'30"W 115°35'30"W 115°34'30"W 115°33'30"W 115°32'30"W 115°31'30"W 115°30'30"W

48°34'N
48°33'30"N
48°33'N
48°32'30"N
48°32'N
48°31'30"N
48°31'N
48°30'30"N
48°30'N
48°29'30"N

48°34'30"N
48°34'N
48°33'30"N
48°33'N
48°32'30"N
48°32'N
48°31'30"N
48°31'N
48°30'30"N
48°30'N
48°29'30"N

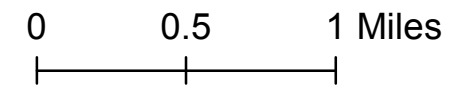


Copyright © 2013 ESRI, i-cubed, GeoEye

West Fork Fire MT-KNF-00222

Infrared Interpretation
Imagery Date: 09/05/2017 0300 MDT
West Fork Interpreted Size: 5,760 Acres

- Isolated Heat
- ◻ Heat Perimeter
- ▨ Intense Heat
- ◻ Scattered Heat



IRIN: Lauren Miller
Map Produced:
09/05/2017 0500 MDT

