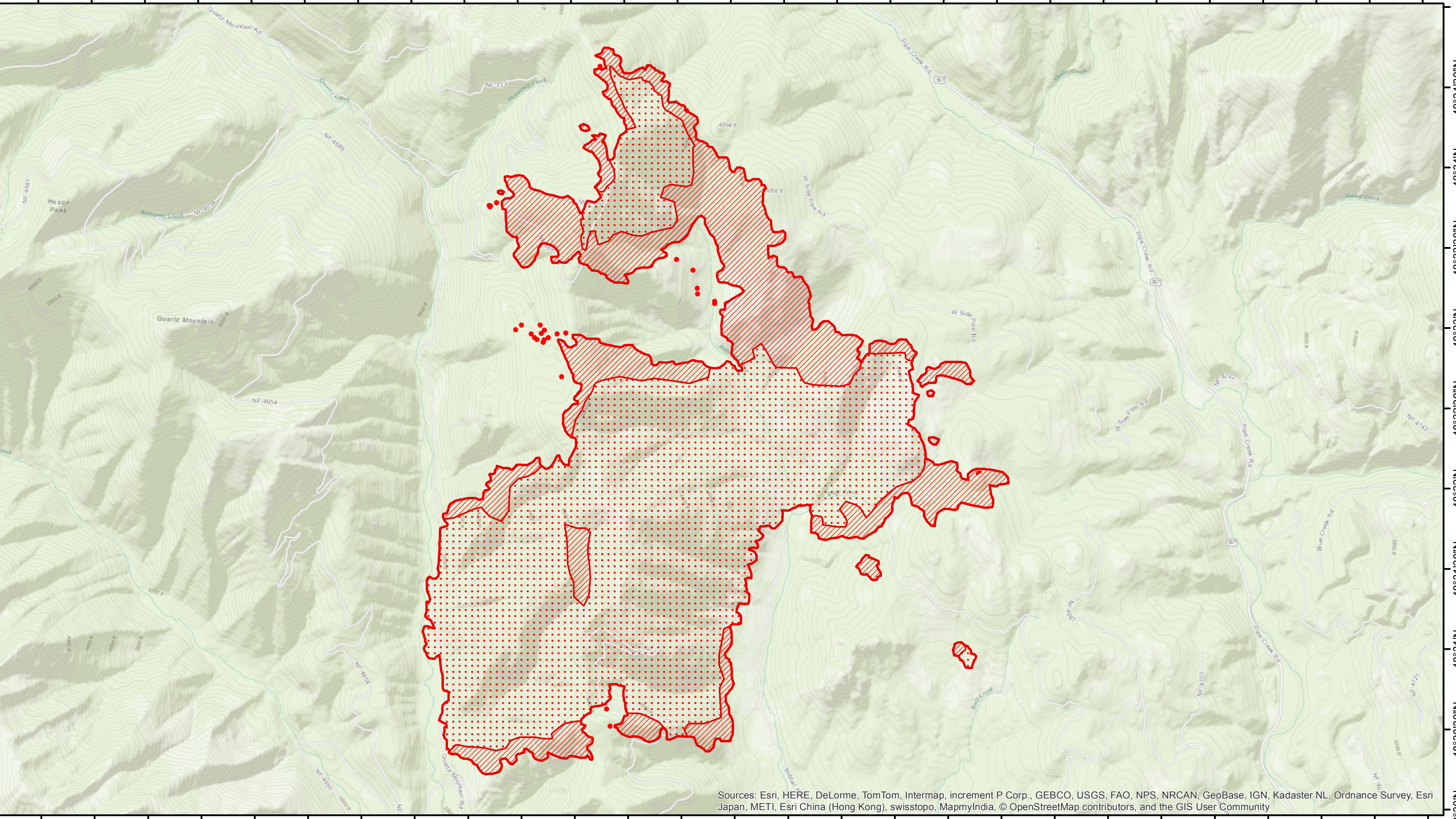


115°43'30"W 115°42'30"W 115°41'30"W 115°40'30"W 115°39'30"W 115°38'30"W 115°37'30"W 115°36'30"W 115°35'30"W 115°34'30"W 115°33'30"W 115°32'30"W 115°31'30"W 115°30'30"W

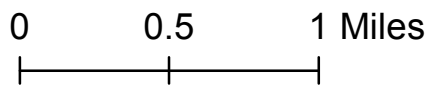


Sources: Esri, HERE, DeLorme, TomTom, Intermap, increment P Corp., GEBCO, USGS, FAO, NPS, NRCAN, GeoBase, IGN, Kadaster NL, Ordnance Survey, Esri Japan, METI, Esri China (Hong Kong), swisstopo, MapmyIndia, © OpenStreetMap contributors, and the GIS User Community

West Fork Fire MT-KNF-00222

Infrared Interpretation
Imagery Date: 09/05/2017 0300 MDT
West Fork Interpreted Size: 5,760 Acres

- Isolated Heat
- Heat Perimeter
- Intense Heat
- Scattered Heat



IRIN: Lauren Miller
Map Produced:
09/05/2017 0500 MDT

