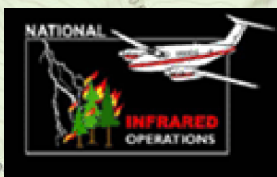




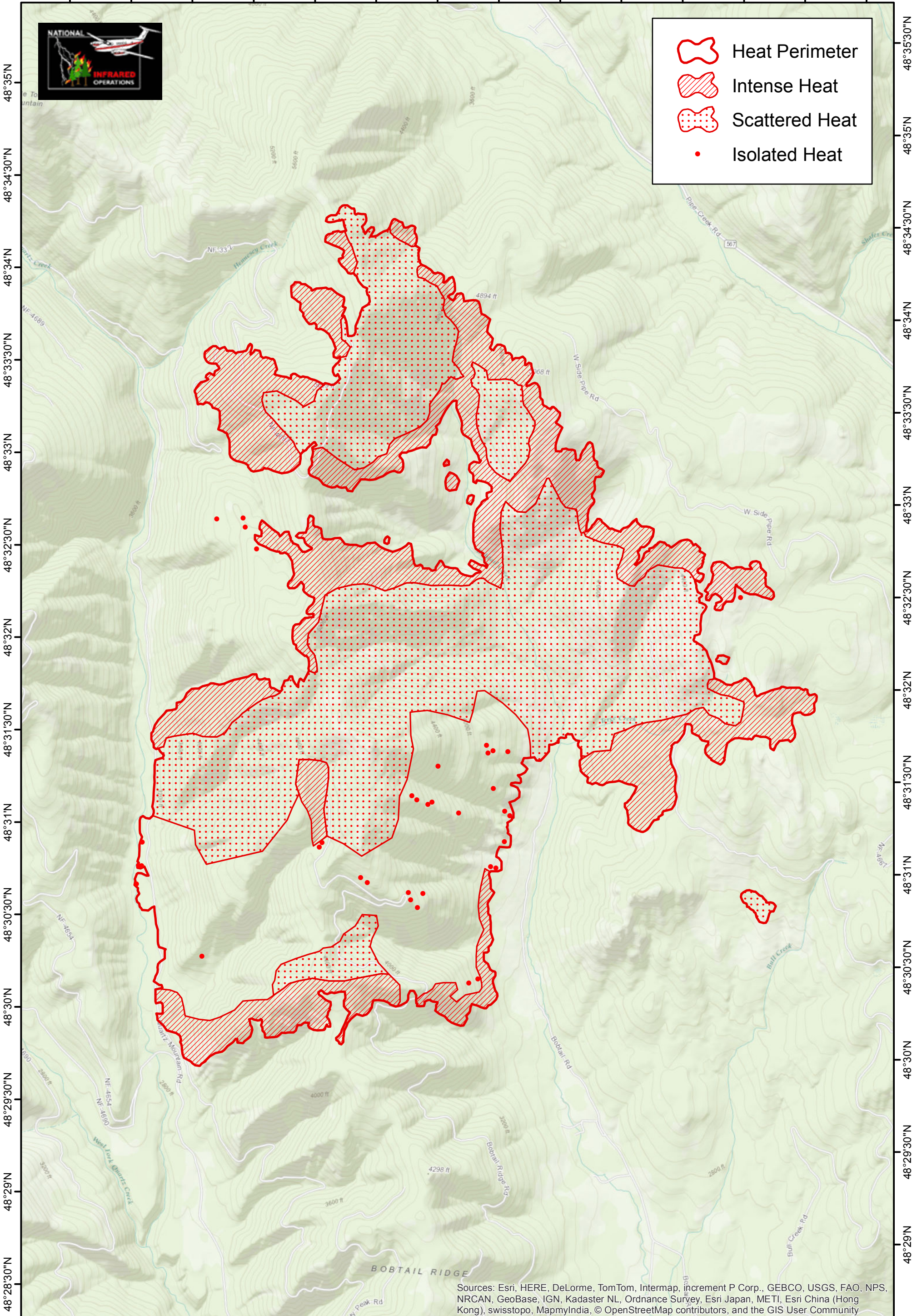


115°40'30"W 115°40'W 115°39'30"W 115°39'W 115°38'30"W 115°38'W 115°37'30"W 115°37'W 115°36'30"W 115°36'W 115°35'30"W 115°35'W 115°34'30"W 115°34'W



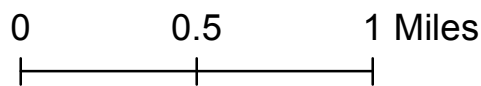
-  Heat Perimeter
-  Intense Heat
-  Scattered Heat
-  Isolated Heat



Sources: Esri, HERE, DeLorme, TomTom, Intermap, increment P Corp., GEBCO, USGS, FAO, NPS, NRCAN, GeoBase, IGN, Kadaster NL, Ordnance Survey, Esri Japan, METI, Esri China (Hong Kong), swisstopo, MapmyIndia, © OpenStreetMap contributors, and the GIS User Community

West Fork Fire MT-KNF-000222

Infrared Interpretation
Imagery Date: 09/05/2017 2135 MDT
West Fork Interpreted Size: 6,498 Acres



IRIN: Lauren Miller
Map Produced:
09/06/2017 0030 MDT

115°40'W 115°39'30"W 115°39'W 115°38'30"W 115°38'W 115°37'30"W 115°37'W 115°36'30"W 115°36'W 115°35'30"W 115°35'W 115°34'30"W 115°34'W 115°33'30"W