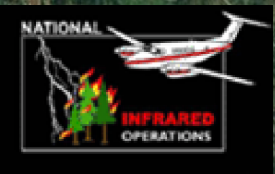




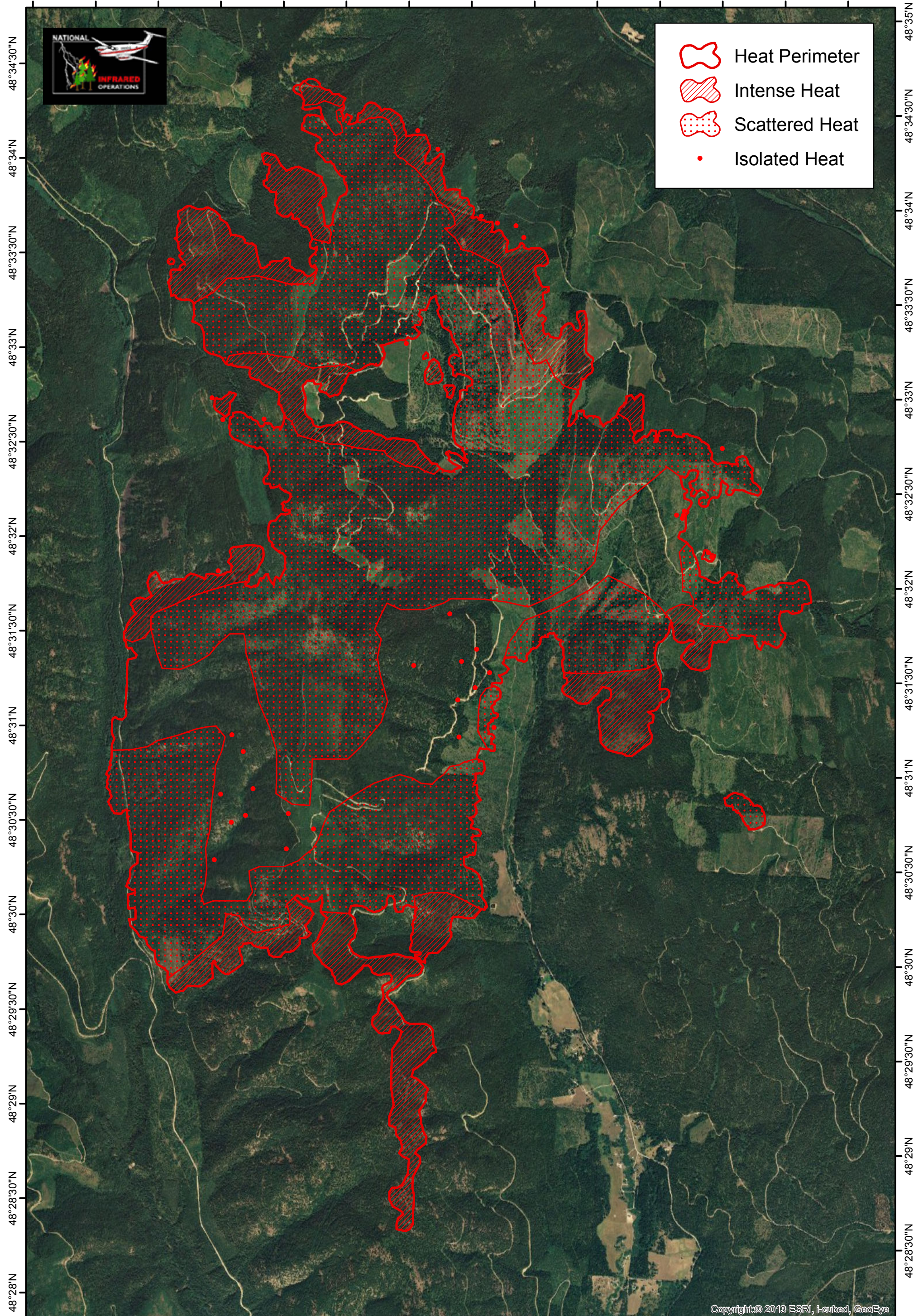


115°40'30"W 115°40"W 115°39'30"W 115°39"W 115°38'30"W 115°38"W 115°37'30"W 115°37"W 115°36'30"W 115°36"W 115°35'30"W 115°35"W 115°34'30"W 115°34"W



-  Heat Perimeter
-  Intense Heat
-  Scattered Heat
-  Isolated Heat

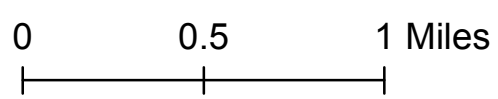


Copyright © 2013 ESRI, Inc., GeoEye

115°39'30"W 115°39"W 115°38'30"W 115°38"W 115°37'30"W 115°37"W 115°36'30"W 115°36"W 115°35'30"W 115°35"W 115°34'30"W 115°34"W 115°33'30"W 115°33"W

West Fork Fire
MT-KNF-000222

Infrared Interpretation
 Imagery Date: 09/07/2017 0146 MDT
 West Fork Interpreted Size: 7,337 Acres



IRIN: Lauren Miller
 Map Produced:
 09/07/2017 0500 MDT