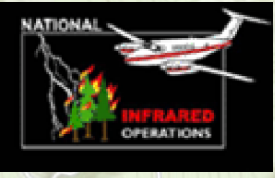


115°40'30"W 115°40"W 115°39'30"W 115°39"W 115°38'30"W 115°38"W 115°37'30"W 115°37"W 115°36'30"W 115°36"W 115°35'30"W 115°35"W 115°34'30"W 115°34"W

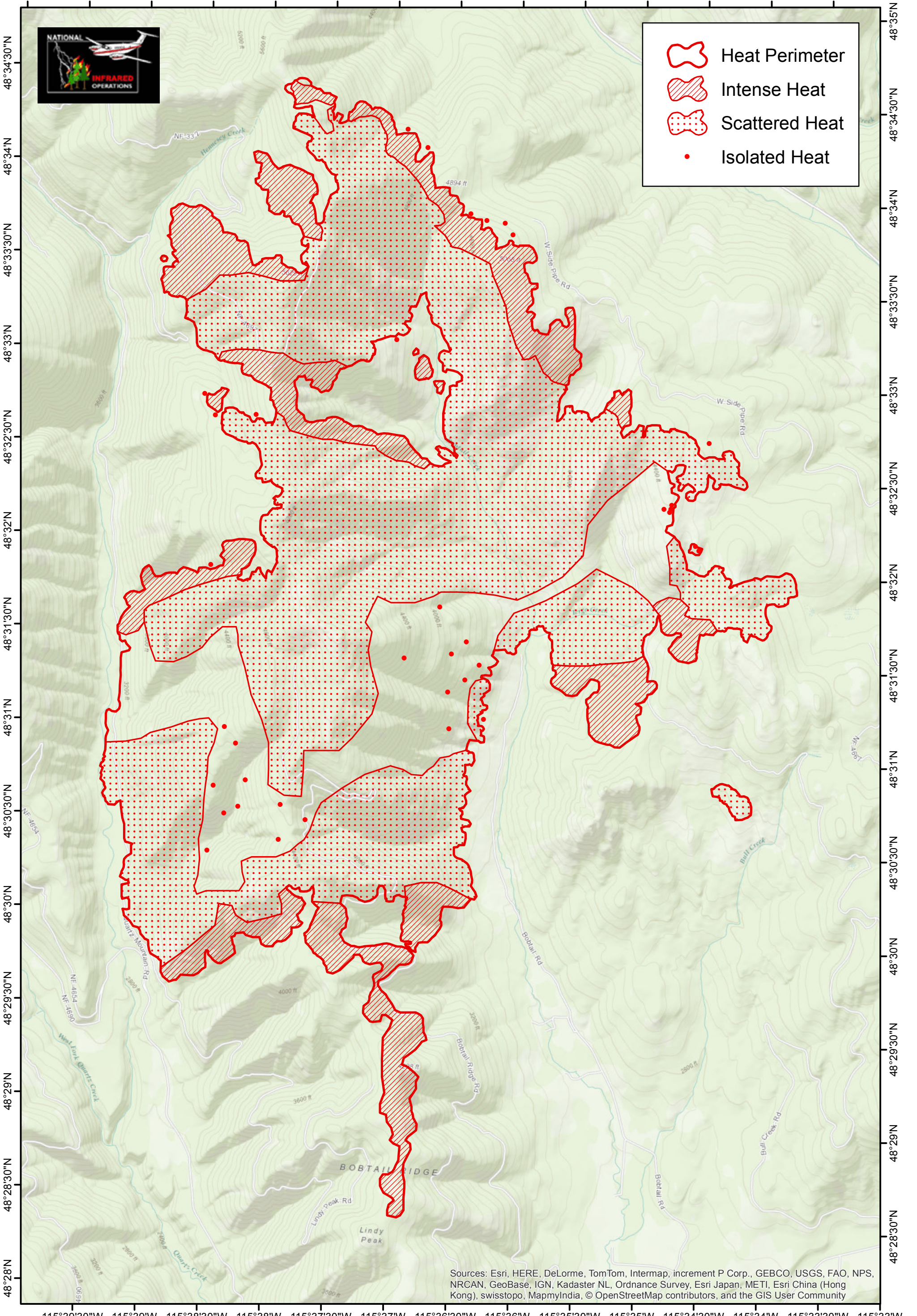


Heat Perimeter

Intense Heat

Scattered Heat

Isolated Heat

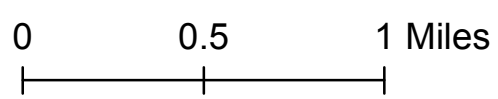


Sources: Esri, HERE, DeLorme, TomTom, Intermap, increment P Corp., GEBCO, USGS, FAO, NPS, NRCAN, GeoBase, IGN, Kadaster NL, Ordnance Survey, Esri Japan, METI, Esri China (Hong Kong), swisstopo, MapmyIndia, © OpenStreetMap contributors, and the GIS User Community

115°39'30"W 115°39"W 115°38'30"W 115°38"W 115°37'30"W 115°37"W 115°36'30"W 115°36"W 115°35'30"W 115°35"W 115°34'30"W 115°34"W

West Fork Fire MT-KNF-000222

Infrared Interpretation
Imagery Date: 09/07/2017 0146 MDT
West Fork Interpreted Size: 7,337 Acres



IRIN: Lauren Miller
Map Produced:
09/07/2017 0500 MDT