

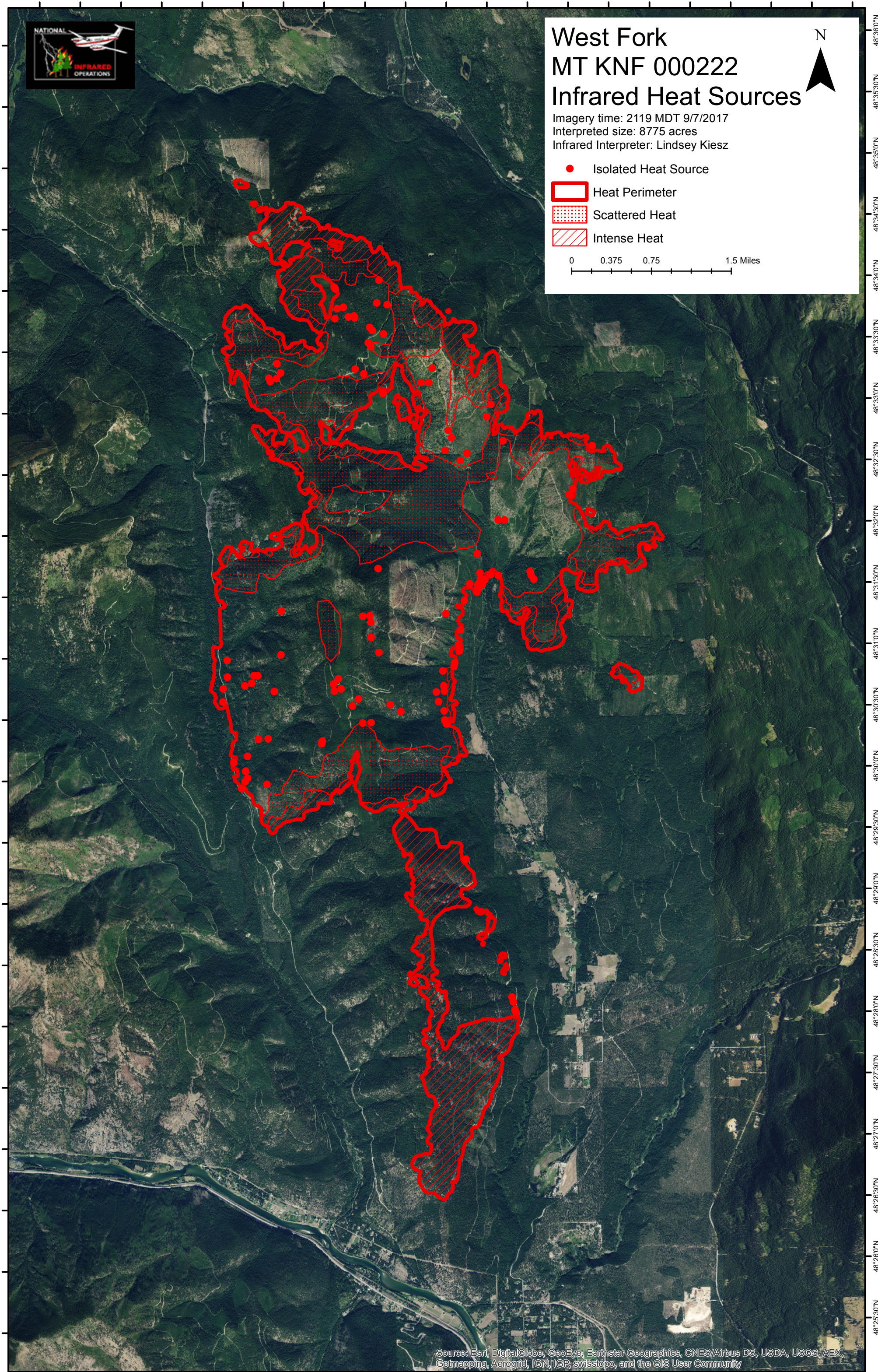
# West Fork MT KNF 000222 Infrared Heat Sources



Imagery time: 2119 MDT 9/7/2017  
Interpreted size: 8775 acres  
Infrared Interpreter: Lindsey Kiesz

- Isolated Heat Source
- ▭ Heat Perimeter
- ▨ Scattered Heat
- ▧ Intense Heat

0 0.375 0.75 1.5 Miles



Source: Esri, DigitalGlobe, GeoEye, Earthstar Geographics, CNES/Airbus DS, USDA, USGS, AEX, Getmapping, Aerogrid, IGN, IGP, swisstopo, and the GIS User Community

115°42'0"W 115°41'30"W 115°41'0"W 115°40'30"W 115°40'0"W 115°39'30"W 115°39'0"W 115°38'30"W 115°38'0"W 115°37'30"W 115°37'0"W 115°36'30"W 115°36'0"W 115°35'30"W 115°35'0"W 115°34'30"W 115°34'0"W 115°33'30"W 115°33'0"W 115°32'30"W 115°32'0"W

48°36'0"N 48°35'30"N 48°35'0"N 48°34'30"N 48°34'0"N 48°33'30"N 48°33'0"N 48°32'30"N 48°32'0"N 48°31'30"N 48°31'0"N 48°30'30"N 48°30'0"N 48°29'30"N 48°29'0"N 48°28'30"N 48°28'0"N 48°27'30"N 48°27'0"N 48°26'30"N 48°26'0"N 48°25'30"N 48°25'0"N