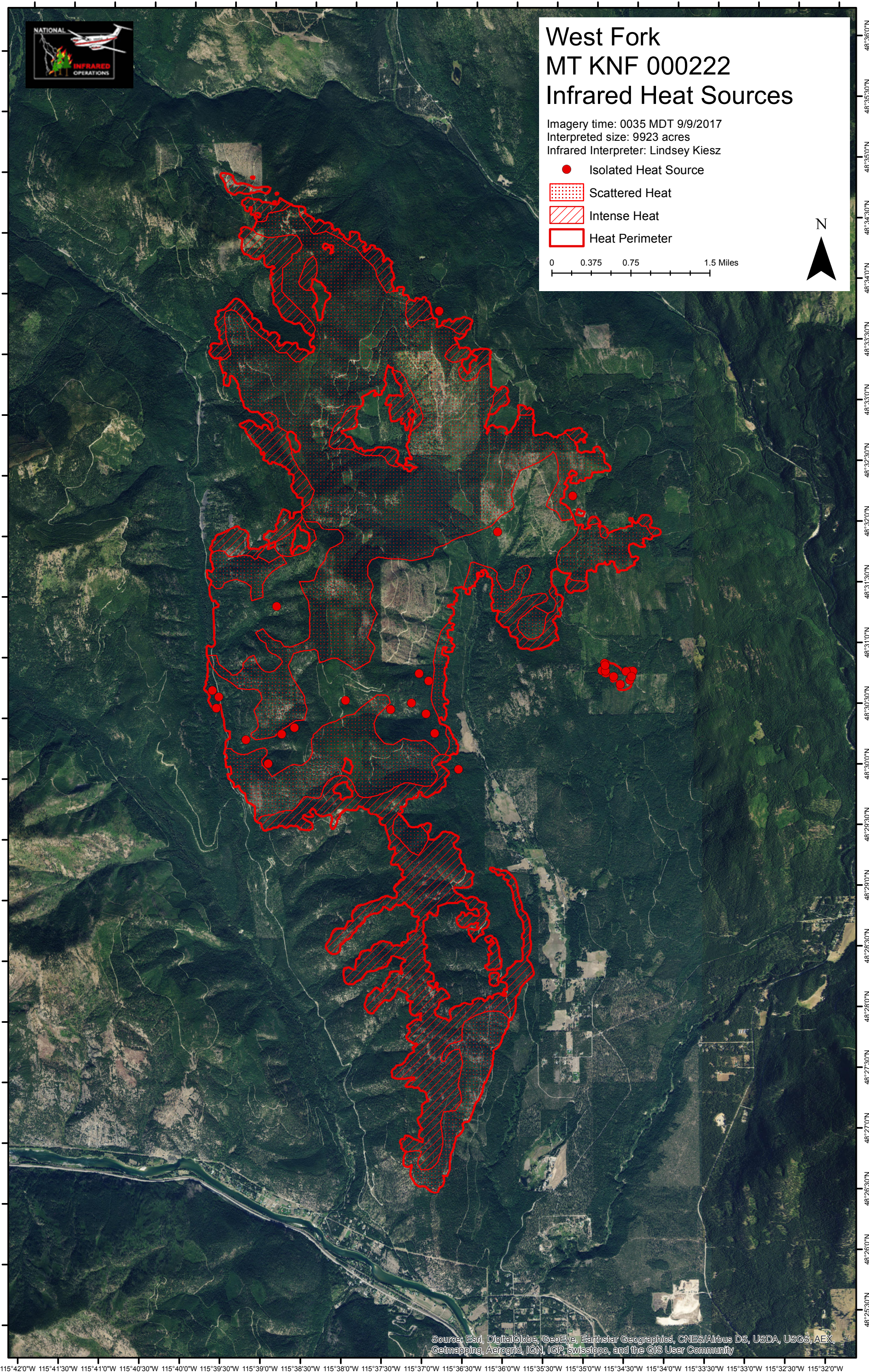
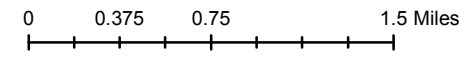


West Fork MT KNF 000222 Infrared Heat Sources

Imagery time: 0035 MDT 9/9/2017
Interpreted size: 9923 acres
Infrared Interpreter: Lindsey Kiesz

- Isolated Heat Source
- ▨ Scattered Heat
- ▨ Intense Heat
- Heat Perimeter



Source: Esri, DigitalGlobe, GeoEye, Earthstar Geographics, CNES/Airbus DS, USDA, USGS, AEX, Getmapping, Aerogrid, IGN, IGP, swisstopo, and the GIS User Community

115°42'0"W 115°41'30"W 115°41'0"W 115°40'30"W 115°40'0"W 115°39'30"W 115°39'0"W 115°38'30"W 115°38'0"W 115°37'30"W 115°37'0"W 115°36'30"W 115°36'0"W 115°35'30"W 115°35'0"W 115°34'30"W 115°34'0"W 115°33'30"W 115°33'0"W 115°32'30"W 115°32'0"W

48°25'30"N 48°26'0"N 48°26'30"N 48°27'0"N 48°27'30"N 48°28'0"N 48°28'30"N 48°29'0"N 48°29'30"N 48°30'0"N 48°30'30"N 48°31'0"N 48°31'30"N 48°32'0"N 48°32'30"N 48°33'0"N 48°33'30"N 48°34'0"N 48°34'30"N 48°35'0"N 48°35'30"N 48°36'0"N