
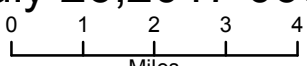


113°46'W 113°44'W 113°42'W 113°40'W 113°38'W 113°36'W 113°34'W 113°32'W 113°30'W 113°28'W 113°26'W 113°24'W 113°22'W 113°20'W 113°18'W 113°16'W 113°14'W

Air Ops Map

Whetstone Meyers Fire

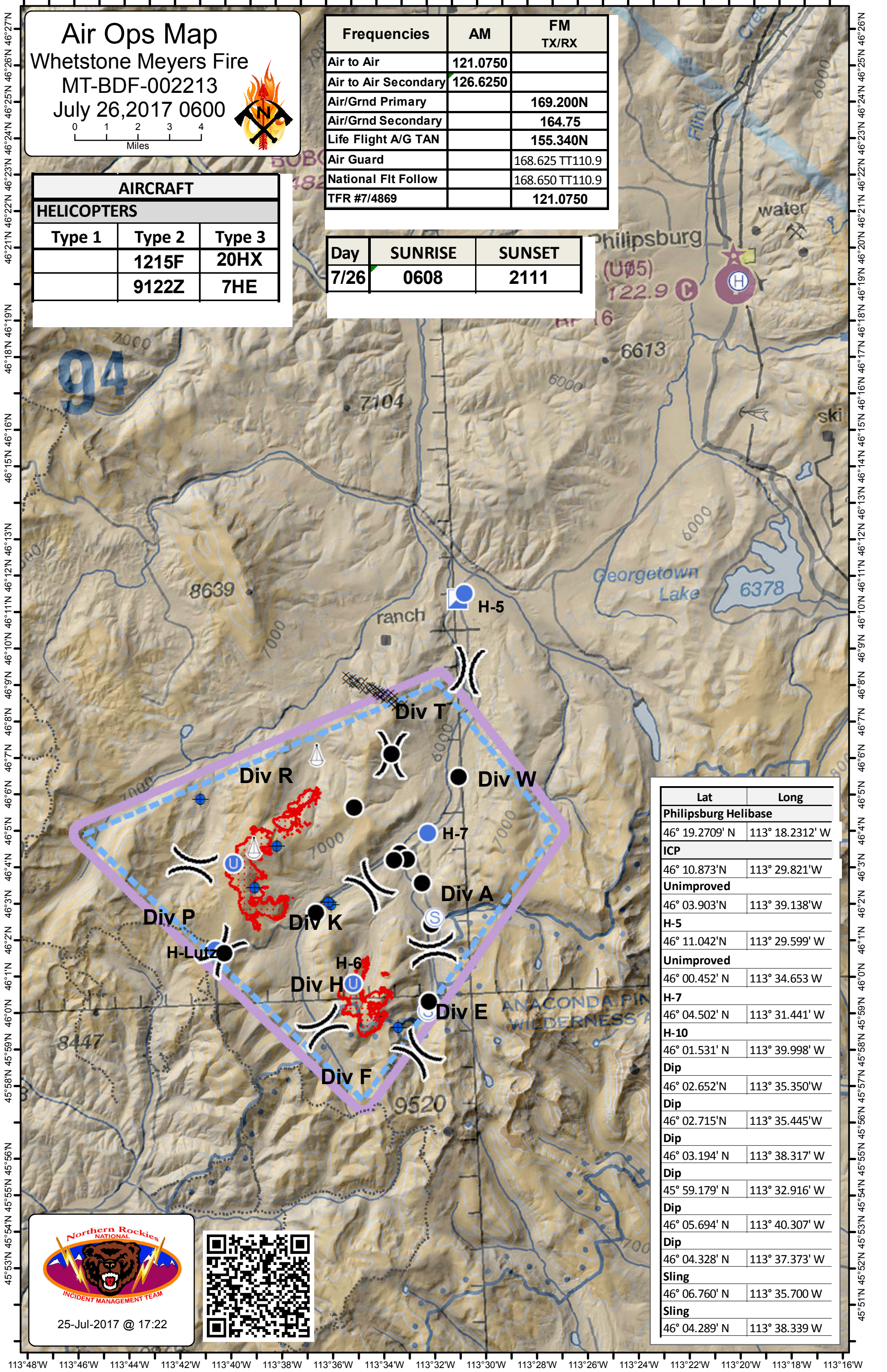
MT-BDF-002213
July 26, 2017 0600

Frequencies	AM	FM TX/RX
Air to Air	121.0750	
Air to Air Secondary	126.6250	
Air/Grnd Primary		169.200N
Air/Grnd Secondary		164.75
Life Flight A/G TAN		155.340N
Air Guard		168.625 TT110.9
National Flt Follow		168.650 TT110.9
TFR #7/4869		121.0750

AIRCRAFT		
HELICOPTERS		
Type 1	Type 2	Type 3
	1215F	20HX
	9122Z	7HE

Day	SUNRISE	SUNSET
7/26	0608	2111



Lat	Long
Philipsburg Helibase	
46° 19.2709' N	113° 18.2312' W
ICP	
46° 10.873' N	113° 29.821' W
Unimproved	
46° 03.903' N	113° 39.138' W
H-5	
46° 11.042' N	113° 29.599' W
Unimproved	
46° 00.452' N	113° 34.653' W
H-7	
46° 04.502' N	113° 31.441' W
H-10	
46° 01.531' N	113° 39.998' W
Dip	
46° 02.652' N	113° 35.350' W
Dip	
46° 02.715' N	113° 35.445' W
Dip	
46° 03.194' N	113° 38.317' W
Dip	
45° 59.179' N	113° 32.916' W
Dip	
46° 05.694' N	113° 40.307' W
Dip	
46° 04.328' N	113° 37.373' W
Sling	
46° 06.760' N	113° 35.700' W
Sling	
46° 04.289' N	113° 38.339' W



25-Jul-2017 @ 17:22



113°48'W 113°46'W 113°44'W 113°42'W 113°40'W 113°38'W 113°36'W 113°34'W 113°32'W 113°30'W 113°28'W 113°26'W 113°24'W 113°22'W 113°20'W 113°18'W 113°16'W