

# Whetstone Ridge & Meyers Fires

MT-BDF-002213

July 28, 2017

Day Shift

1,052 Acres (Meyers)

2,104 Acres (Whetstone Ridge)

as of 07/25/2017

at 2344 hrs

UTM NAD83 Zone 12

Page 1 of 12

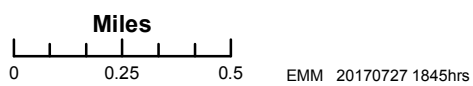
Div A



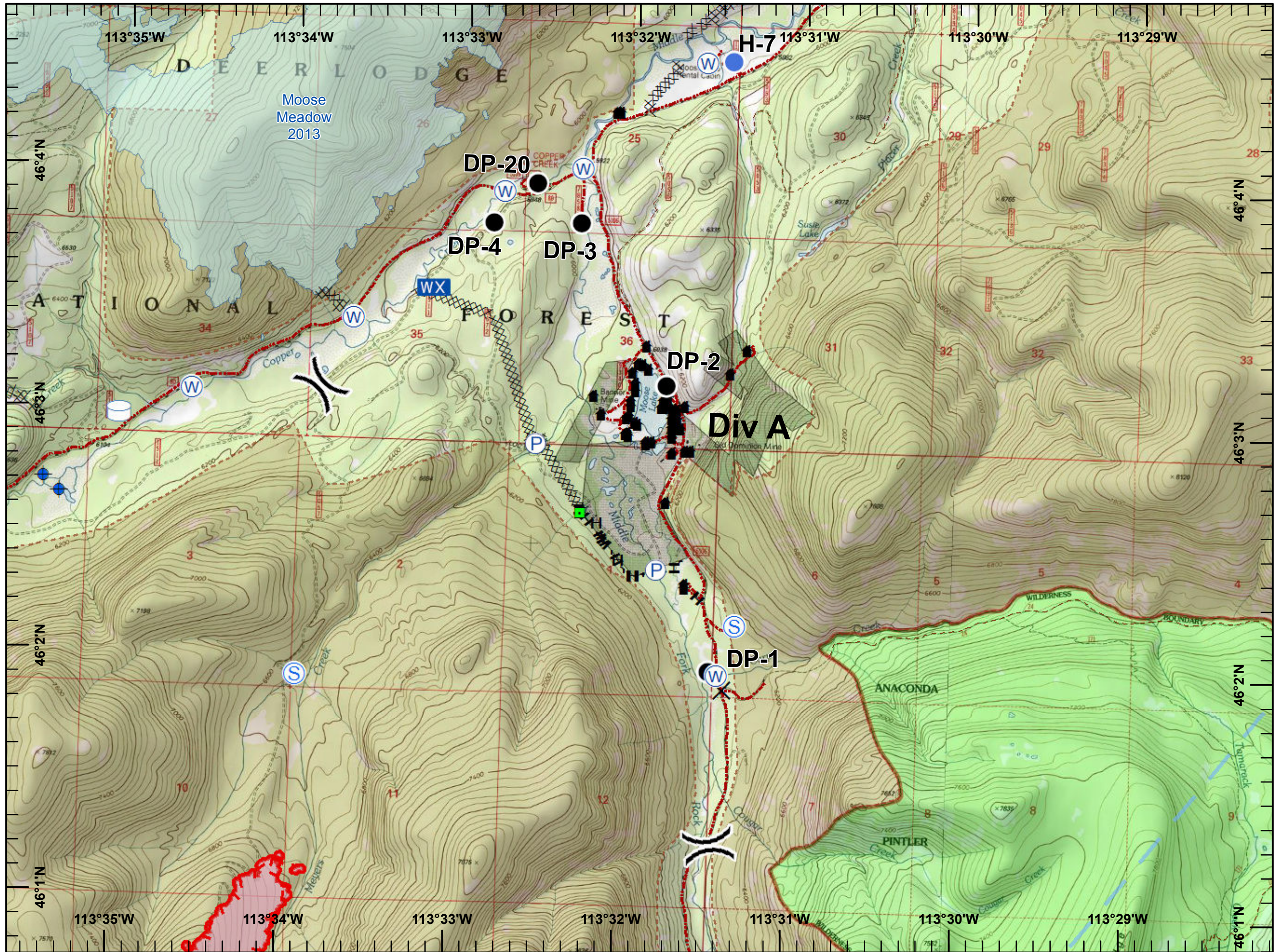
## Legend

- Closure
- Dip Site
- Drop Point
- Helispot
- Landmark
- Mobile Weather Unit
- Pump
- Staging Area
- Water Source
- Water Tank
- Division Break

- Uncontrolled Fire Edge
- Completed Dozer Line
- Completed Hand Line
- Temporary Flight Restriction
- Heat Perimeter
- Fire History
- Structure
- Roads
- Trails
- Inventoried Roadless Area
- Wilderness



EMM 20170727 1845hrs



# Whetstone Ridge & Meyers Fires

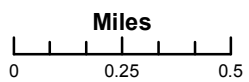
MT-BDF-002213  
 July 28, 2017  
 Day Shift  
 1,052 Acres (Meyers)  
 2,104 Acres (Whetstone Ridge)  
 as of 07/25/2017  
 at 2344 hrs  
 UTM NAD83 Zone 12  
 Page 2 of 12  
 Div E



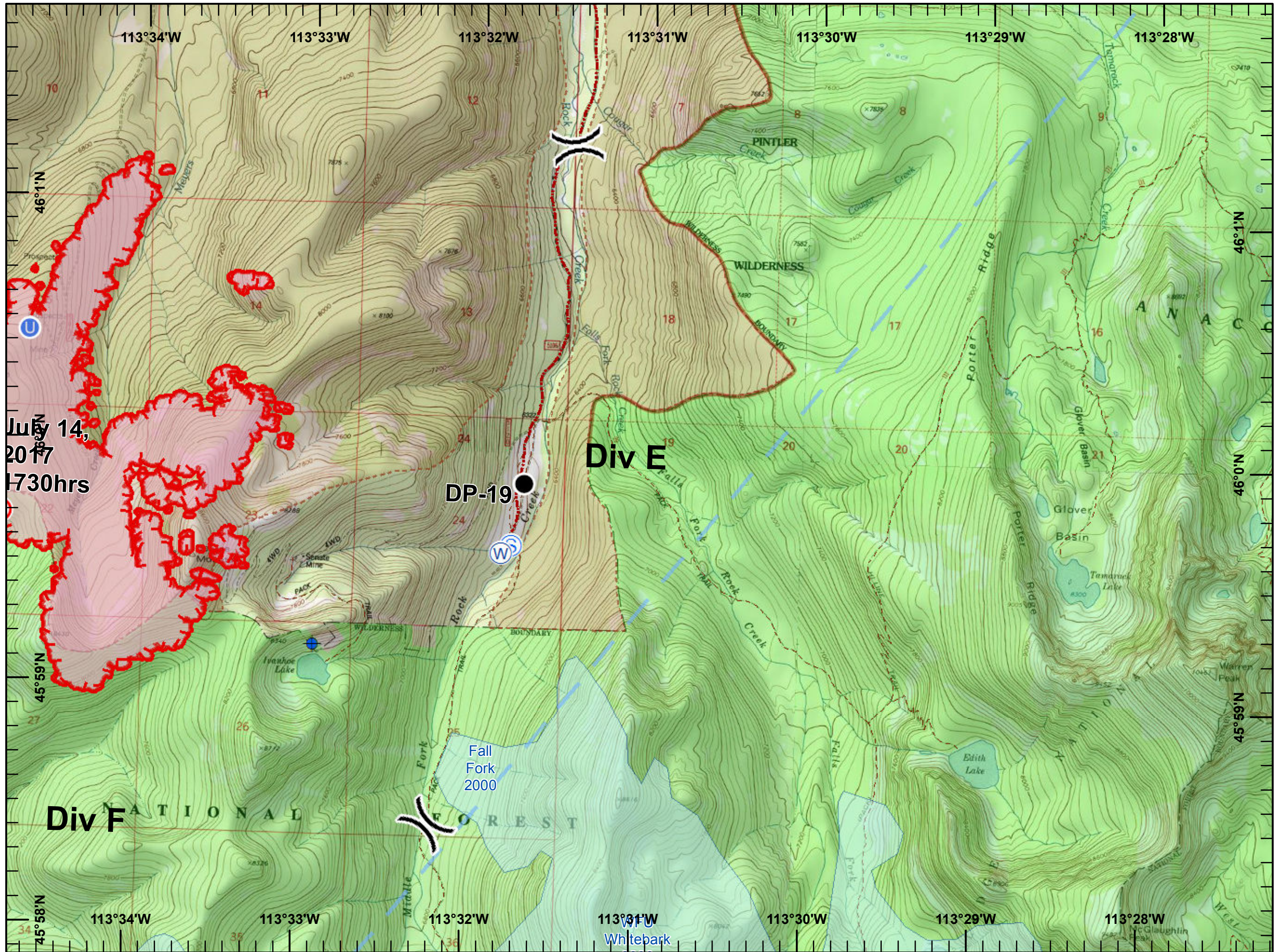
## Legend

- Dip Site
- Drop Point
- Fire Origin
- Unimproved Landing Area
- Staging Area
- Water Source
- Division Break

- Uncontrolled Fire Edge
- Temporary Flight Restriction
- Heat Perimeter
- Fire History
- Structure
- Roads
- Trails
- Inventoried Roadless Area
- Wilderness



EMM 20170727 1845hrs



# Whetstone Ridge & Meyers Fires

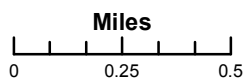
MT-BDF-002213  
 July 28, 2017  
 Day Shift  
 1,052 Acres (Meyers)  
 2,104 Acres (Whetstone Ridge)  
 as of 07/25/2017  
 at 2344 hrs  
 UTM NAD83 Zone 12  
 Page 3 of 12  
 Div F



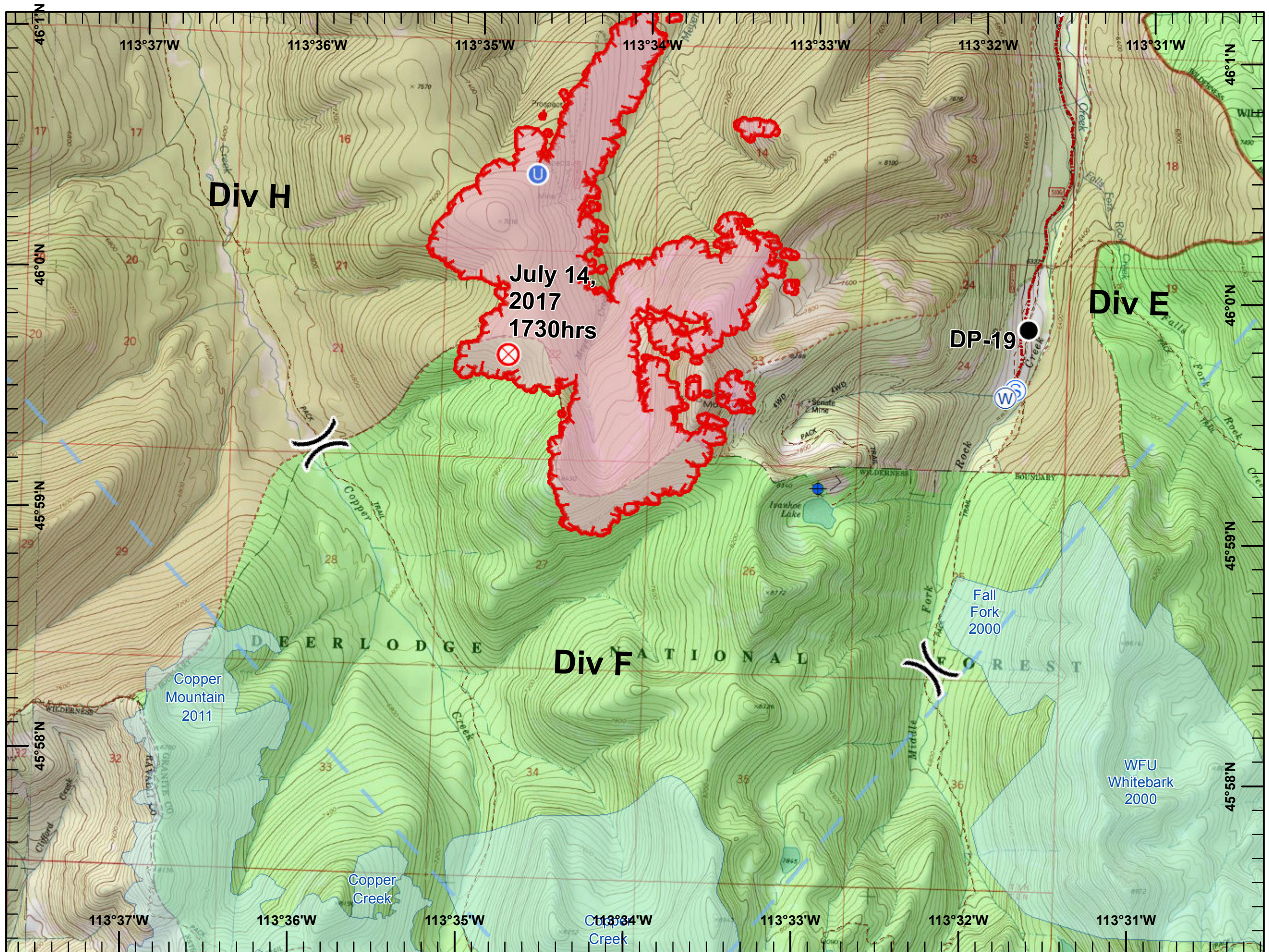
## Legend

- Dip Site
- Drop Point
- Fire Origin
- Unimproved Landing Area
- Staging Area
- Water Source
- Division Break

- Uncontrolled Fire Edge
- Temporary Flight Restriction
- Heat Perimeter
- Fire History
- Structure
- Roads
- Trails
- Inventoried Roadless Area
- Wilderness



EMM 20170727 1845hrs



# Whetstone Ridge & Meyers Fires

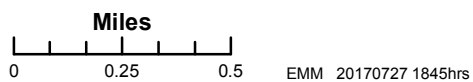
MT-BDF-002213  
 July 28, 2017  
 Day Shift  
 1,052 Acres (Meyers)  
 2,104 Acres (Whetstone Ridge)  
 as of 07/25/2017  
 at 2344 hrs  
 UTM NAD83 Zone 12  
 Page 4 of 12  
 Div H

## Legend

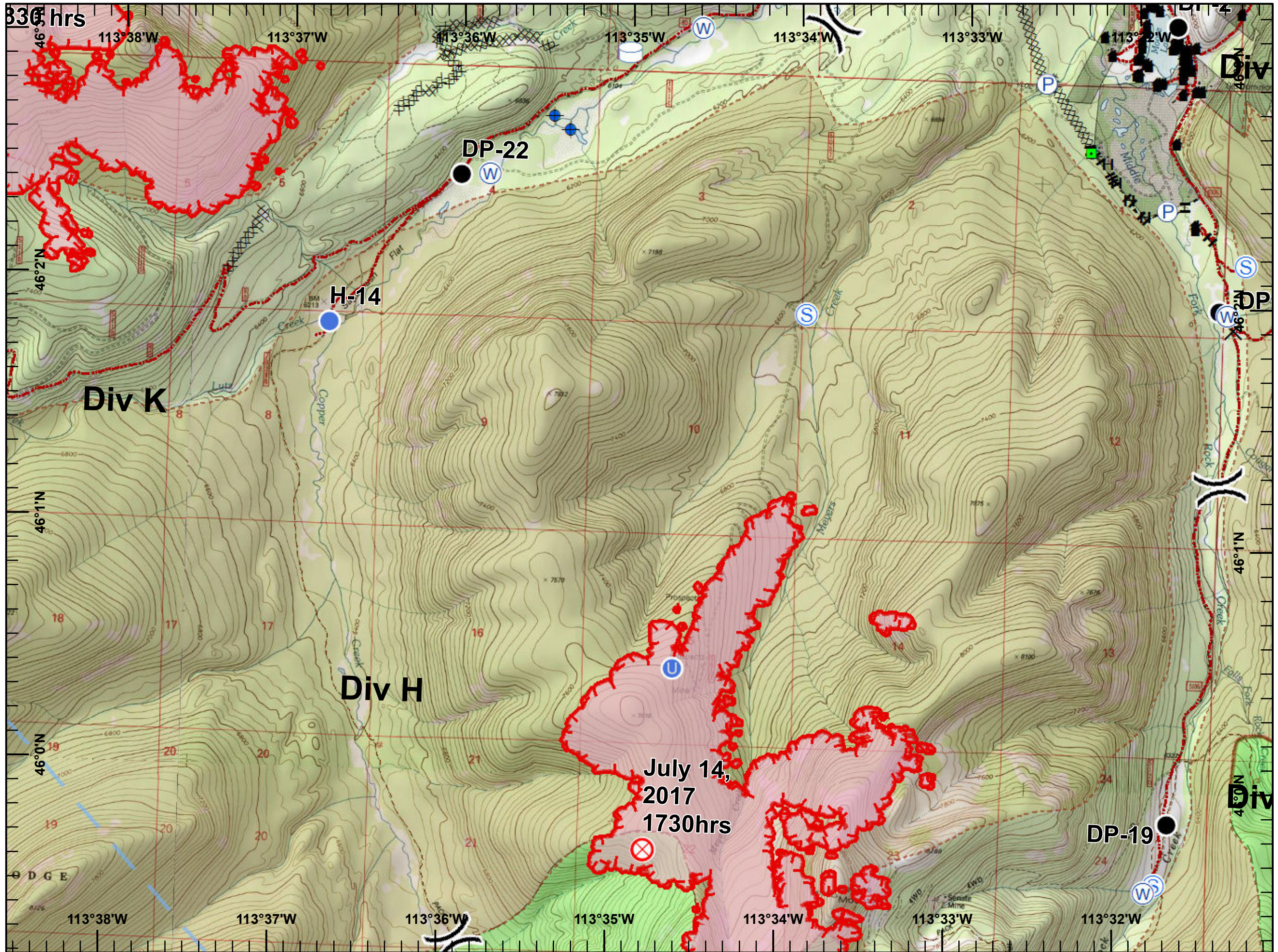


- Closure
- Dip Site
- Drop Point
- Fire Origin
- Unimproved Landing Area
- Helispot
- Landmark
- Pump
- Staging Area
- Water Source
- Water Tank
- Division Break

- Uncontrolled Fire Edge
- Completed Dozer Line
- Completed Hand Line
- Temporary Flight Restriction
- Heat Perimeter
- Structure
- Roads
- Trails
- Inventoried Roadless Area
- Wilderness



EMM 20170727 1845hrs



# Whetstone Ridge & Meyers Fires

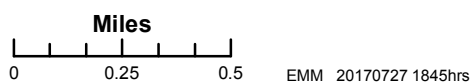
MT-BDF-002213  
 July 28, 2017  
 Day Shift  
 1,052 Acres (Meyers)  
 2,104 Acres (Whetstone Ridge)  
 as of 07/25/2017  
 at 2344 hrs  
 UTM NAD83 Zone 12  
 Page 5 of 12  
 Div K



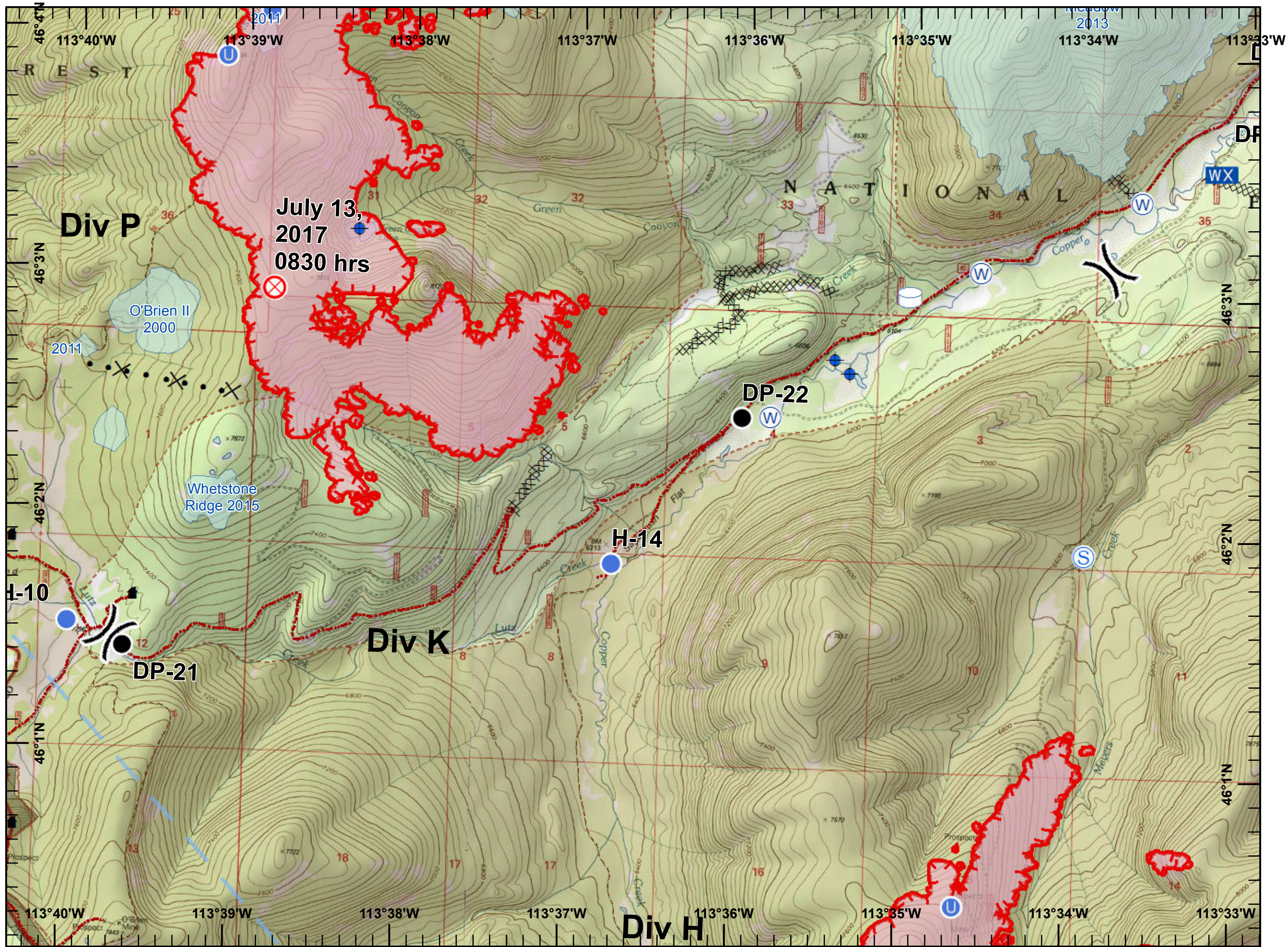
## Legend

- Dip Site
- Drop Point
- Fire Origin
- Unimproved Landing Area
- Helispot
- Mobile Weather Unit
- Staging Area
- Water Source
- Water Tank
- Division Break

- Uncontrolled Fire Edge
- Completed Dozer Line
- Proposed Dozer Line
- Temporary Flight Restriction
- Heat Perimeter
- Fire History
- Structure
- Roads
- Trails
- Inventoried Roadless Area



EMM 20170727 1845hrs



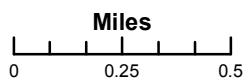
# Whetstone Ridge & Meyers Fires

MT-BDF-002213  
 July 28, 2017  
 Day Shift  
 1,052 Acres (Meyers)  
 2,104 Acres (Whetstone Ridge)  
 as of 07/25/2017  
 at 2344 hrs  
 UTM NAD83 Zone 12  
 Page 6 of 12  
 Div P

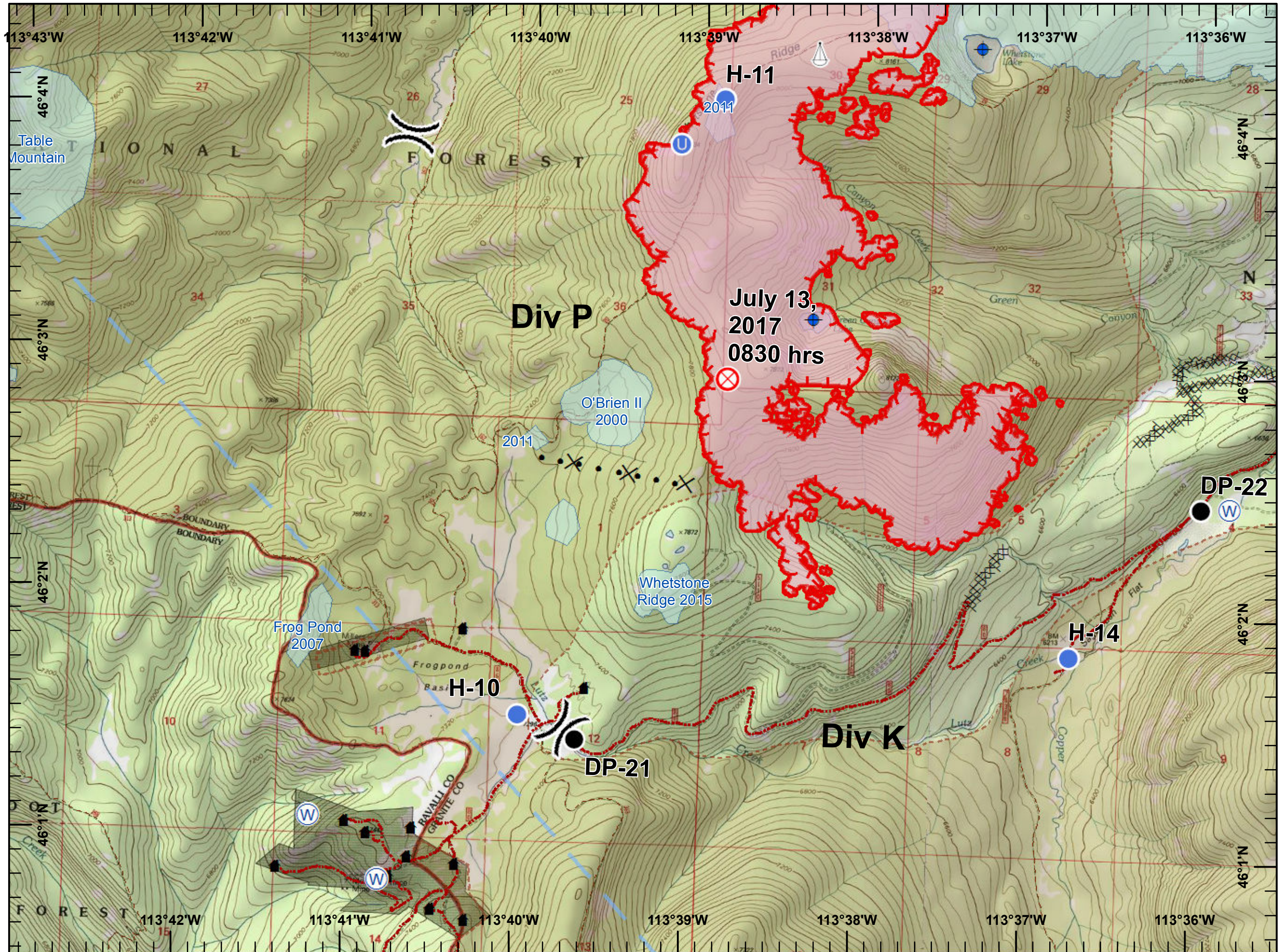


## Legend

- Dip Site
- Drop Point
- Fire Origin
- Unimproved Landing Area
- Helispot
- Sling Site
- Water Source
- Division Break
- Uncontrolled Fire Edge
- Completed Dozer Line
- Proposed Dozer Line
- Temporary Flight Restriction
- Heat Perimeter
- Fire History
- Structure
- Roads
- Trails
- Inventoried Roadless Area



EMM 20170727 1845hrs



# Whetstone Ridge & Meyers Fires

MT-BDF-002213  
 July 28, 2017  
 Day Shift  
 1,052 Acres (Meyers)  
 2,104 Acres (Whetstone Ridge)  
 as of 07/25/2017  
 at 2344 hrs  
 UTM NAD83 Zone 12  
 Page 7 of 12  
 Div R(sw)

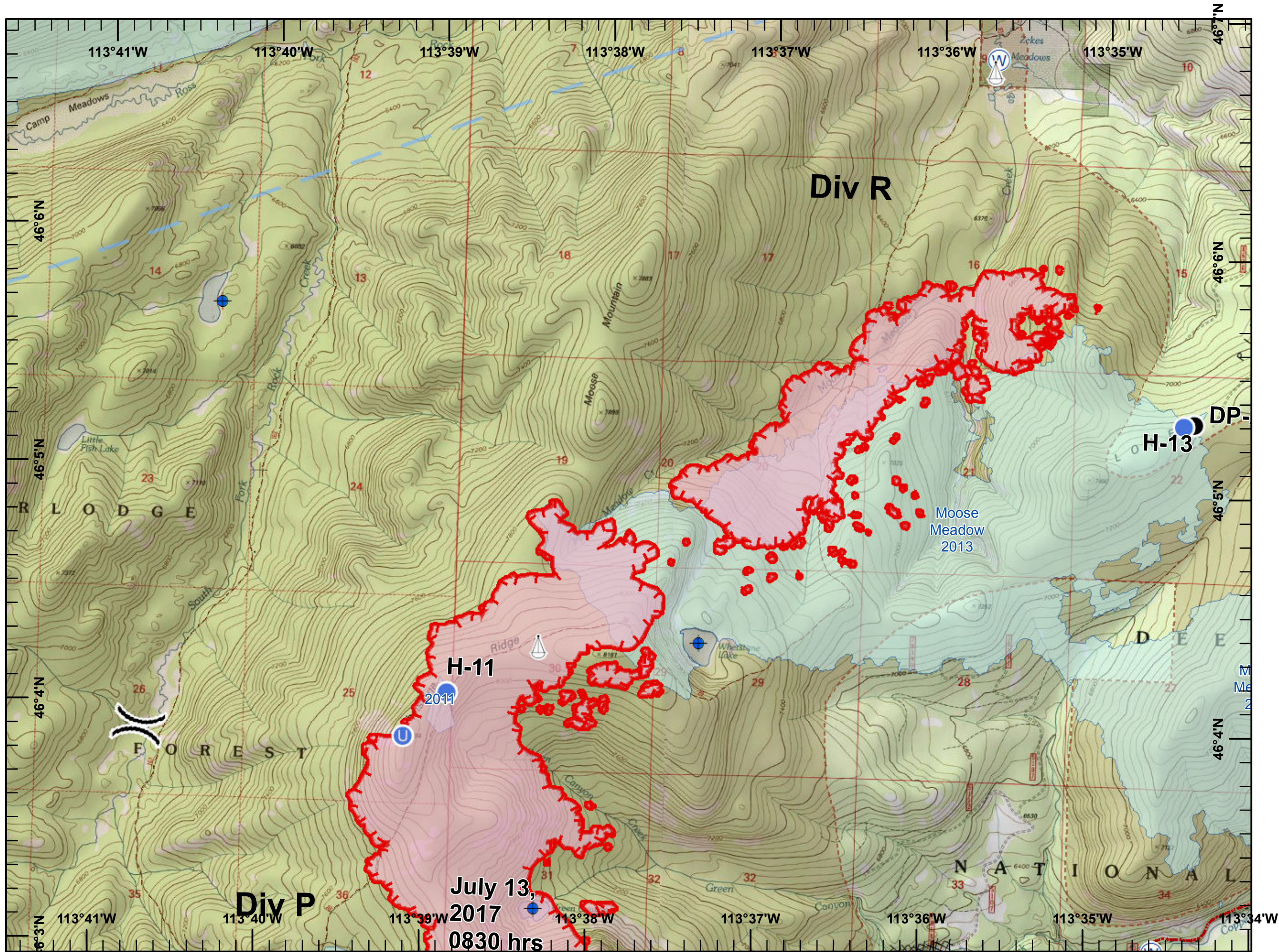


## Legend

- Dip Site
- Drop Point
- Fire Origin
- Unimproved Landing Area
- Helispot
- Sling Site
- Water Source
- Division Break

- Uncontrolled Fire Edge
- Completed Dozer Line
- Temporary Flight Restriction
- Heat Perimeter
- Fire History
- Roads
- Trails
- Inventoried Roadless Area

Miles  
 0 0.25 0.5  
 EMM 20170727 1845hrs







# Whetstone Ridge & Meyers Fires

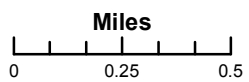
MT-BDF-002213  
 July 28, 2017  
 Day Shift  
 1,052 Acres (Meyers)  
 2,104 Acres (Whetstone Ridge)  
 as of 07/25/2017  
 at 2344 hrs  
 UTM NAD83 Zone 12  
 Page 8 of 12  
 Div R(ne)



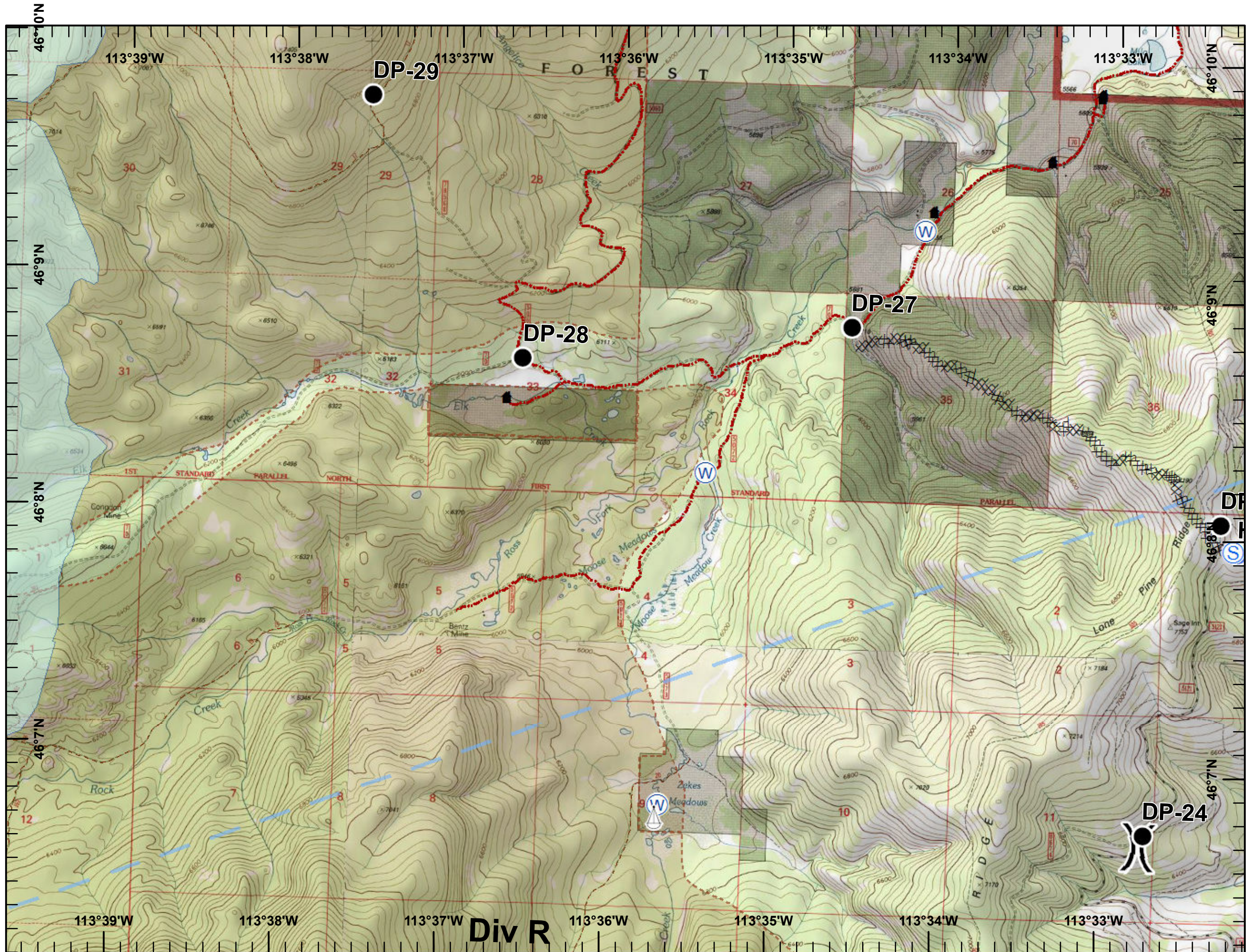
## Legend

-  Drop Point
-  Helispot
-  Sling Site
-  Staging Area
-  Water Source
-  Division Break

-  Completed Dozer Line
-  Temporary Flight Restriction
-  Fire History
-  Structure
-  Roads
-  Trails
-  Inventoried Roadless Area



EMM 20170727 1845hrs





# Whetstone Ridge & Meyers Fires

MT-BDF-002213

July 28, 2017

Day Shift

1,052 Acres (Meyers)

2,104 Acres (Whetstone Ridge)

as of 07/25/2017

at 2344 hrs

UTM NAD83 Zone 12

Page 9 of 12

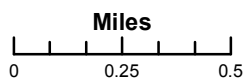
Div T



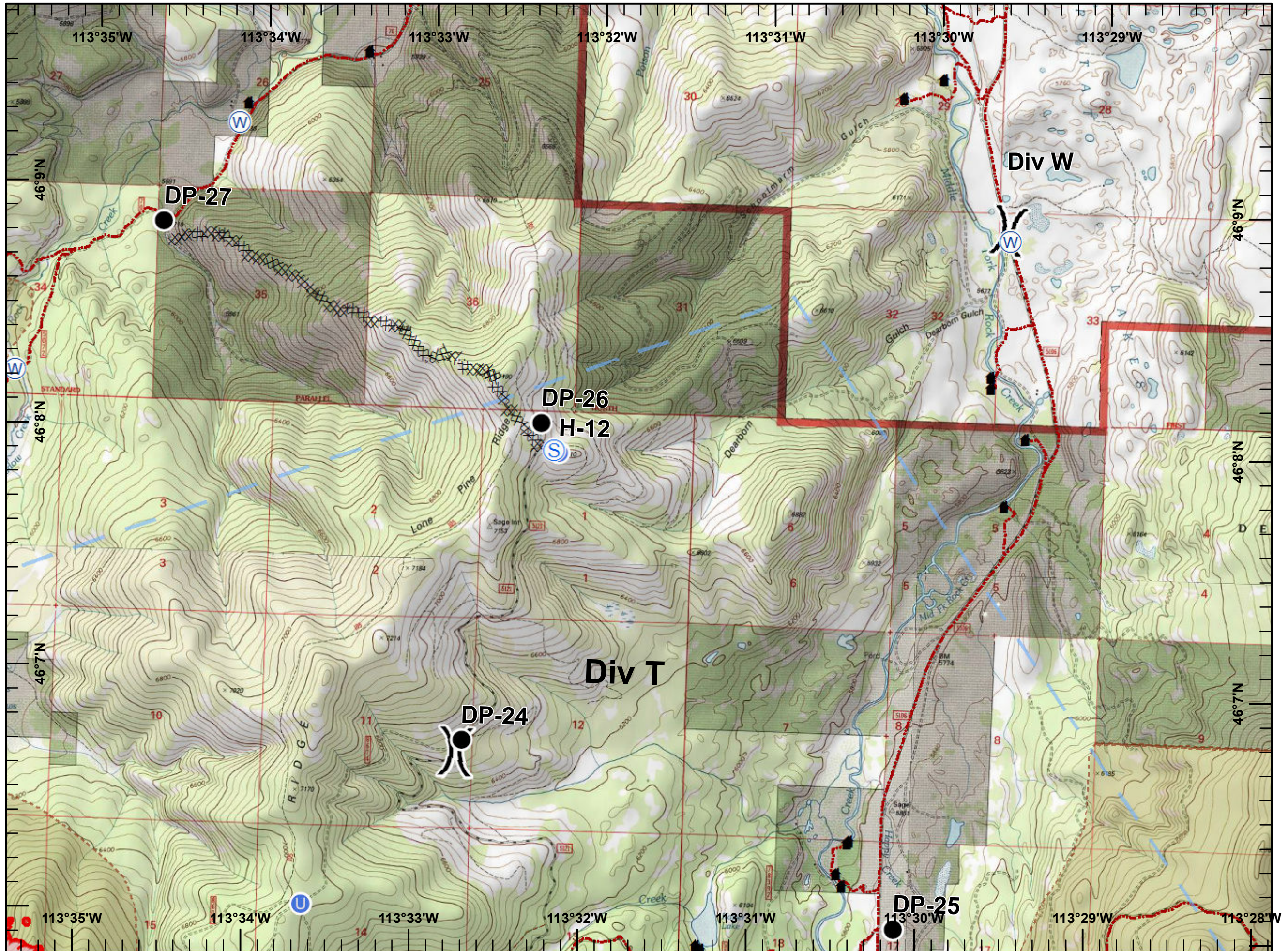
## Legend

-  Drop Point
-  Unimproved Landing Area
-  Helispot
-  Staging Area
-  Water Source
-  Division Break

-  Uncontrolled Fire Edge
-  Completed Dozer Line
-  Temporary Flight Restriction
-  Heat Perimeter
-  Structure
-  Roads
-  Trails
-  Inventoried Roadless Area



EMM 20170727 1845hrs



# Whetstone Ridge & Meyers Fires

MT-BDF-002213

July 28, 2017

Day Shift

1,052 Acres (Meyers)

2,104 Acres (Whetstone Ridge)

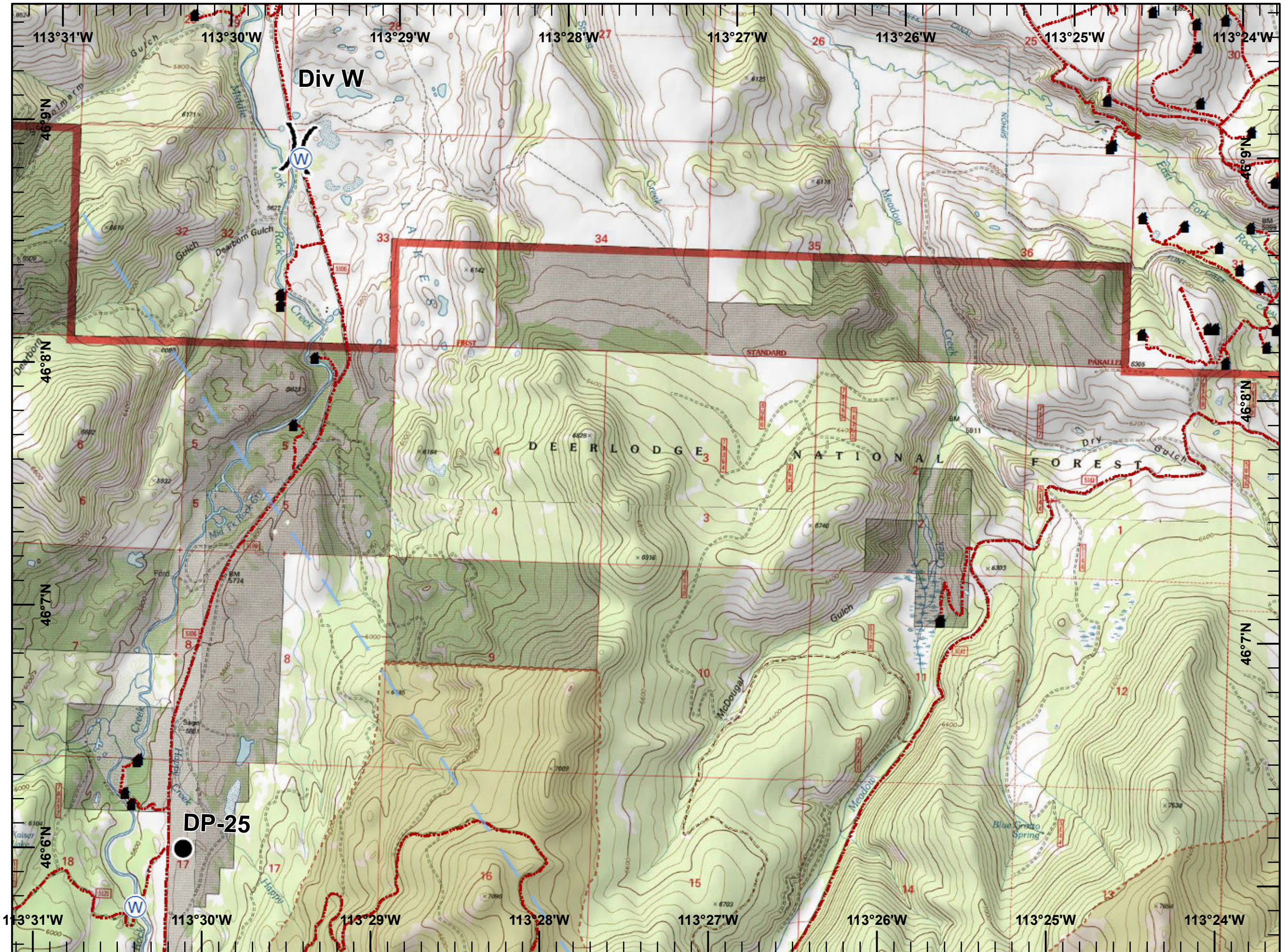
as of 07/25/2017

at 2344 hrs

UTM NAD83 Zone 12

Page 10 of 12

Div W(n)



## Legend

● Drop Point

Ⓜ Water Source

⌋ Division Break

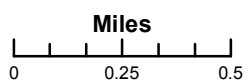
⌋ Temporary Flight Restriction

▣ Structure

--- Roads

- - - Trails

▣ Inventoried Roadless Area






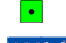




EMM 20170727 1845hrs

# Whetstone Ridge & Meyers Fires

MT-BDF-002213  
 July 28, 2017  
 Day Shift  
 1,052 Acres (Meyers)  
 2,104 Acres (Whetstone Ridge)  
 as of 07/25/2017  
 at 2344 hrs  
 UTM NAD83 Zone 12  
 Page 11 of 12  
 Div W(s)

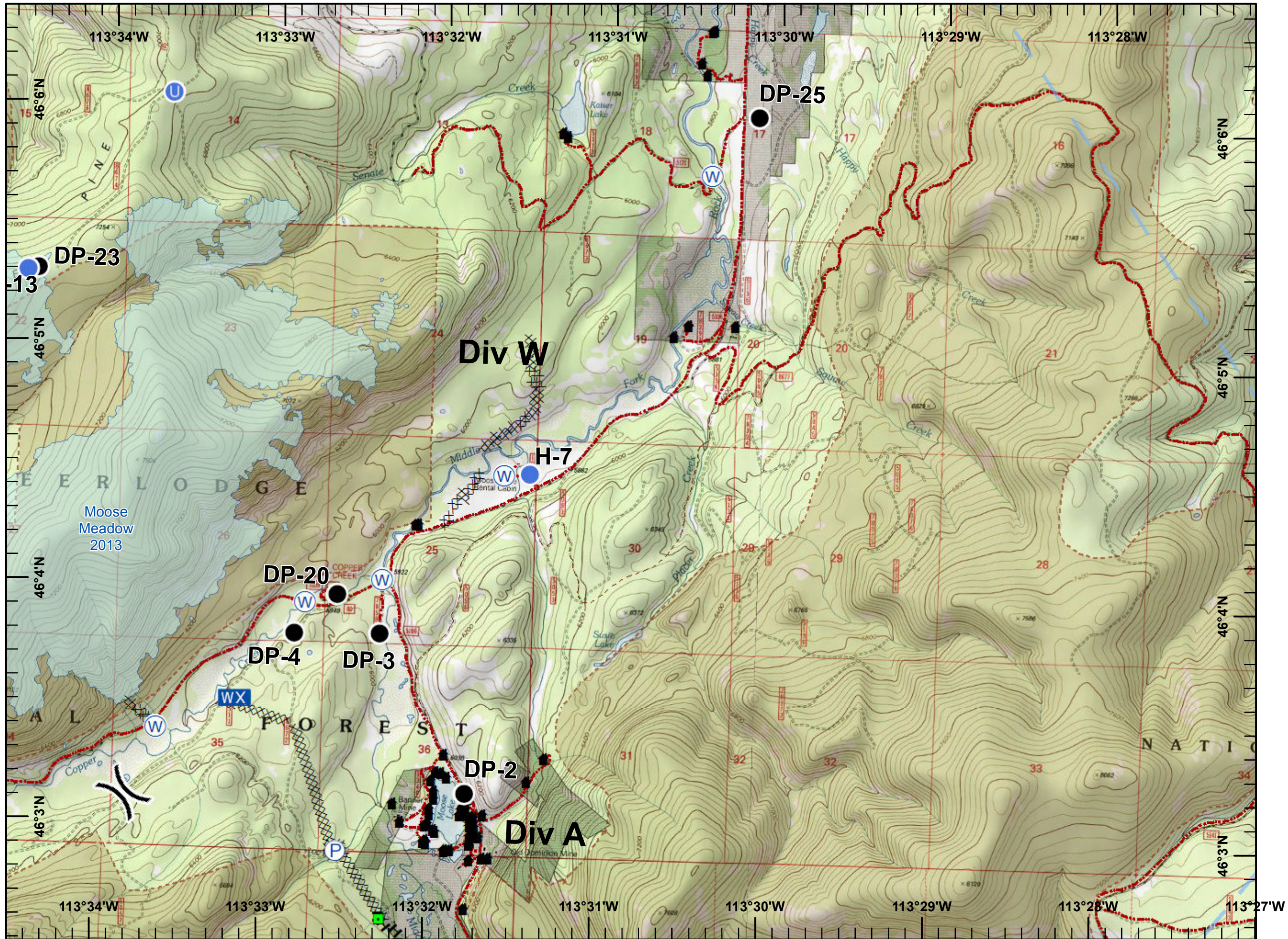


## Legend

-  Drop Point
-  Unimproved Landing Area
-  Helispot
-  Landmark
-  Mobile Weather Unit
-  Pump
-  Water Source
-  Division Break

-  Completed Dozer Line
-  Completed Hand Line
-  Temporary Flight Restriction
-  Fire History
-  Structure
-  Roads
-  Trails
-  Inventoried Roadless Area

Miles  
 0 0.25 0.5  
 EMM 20170727 1845hrs



# Whetstone Ridge & Meyers Fires

MT-BDF-002213

July 28, 2017

Day Shift

1,052 Acres (Meyers)

2,104 Acres (Whetstone Ridge)

as of 07/25/2017

at 2344 hrs

UTM NAD83 Zone 12

Page 12 of 12

ICP



## Legend

- Helispot
- Incident Command Post
- Water Source
- Division Break

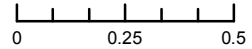
Completed Dozer Line

Temporary Flight Restriction

Structure

Roads

Miles



EMM 20170727 1845hrs

